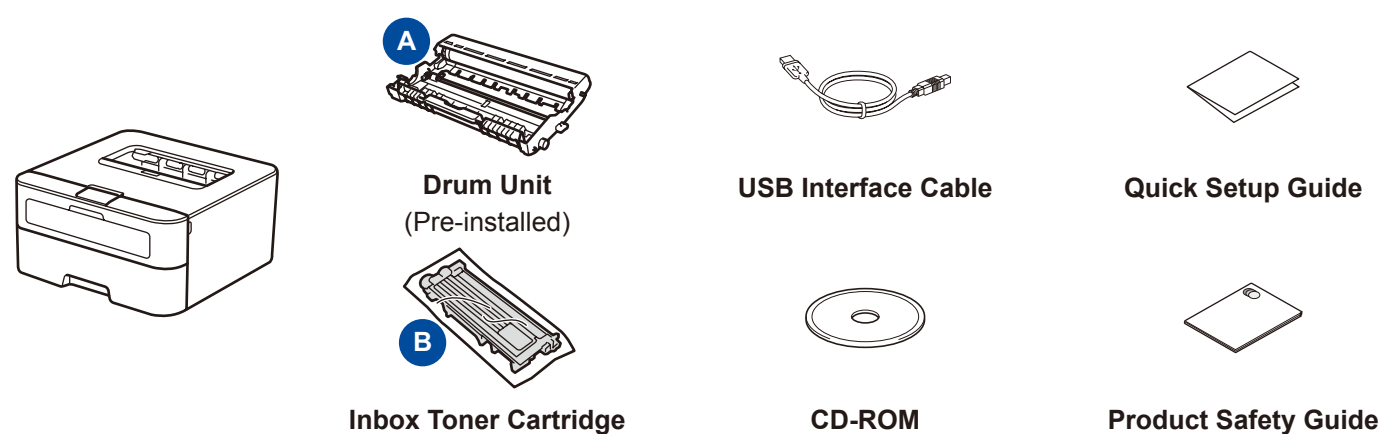


Unpack the machine and check the components



Read the Product Safety Guide first, then read this Quick Setup Guide for the correct installation procedure.

NOTE:

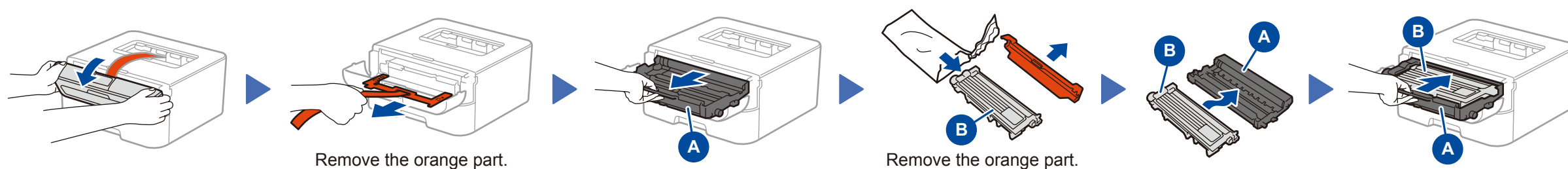
USB cable

We recommend using a USB 2.0 cable (Type A/B) that is no more than 2 meters.

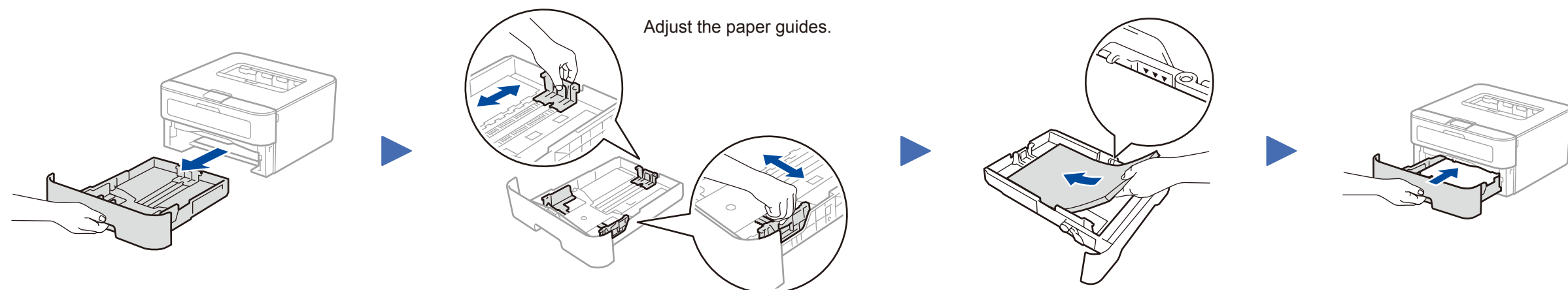
Network cable

Use a straight-through Category 5 (or greater) twisted-pair cable for 10BASE-T or 100BASE-TX Fast Ethernet Network.

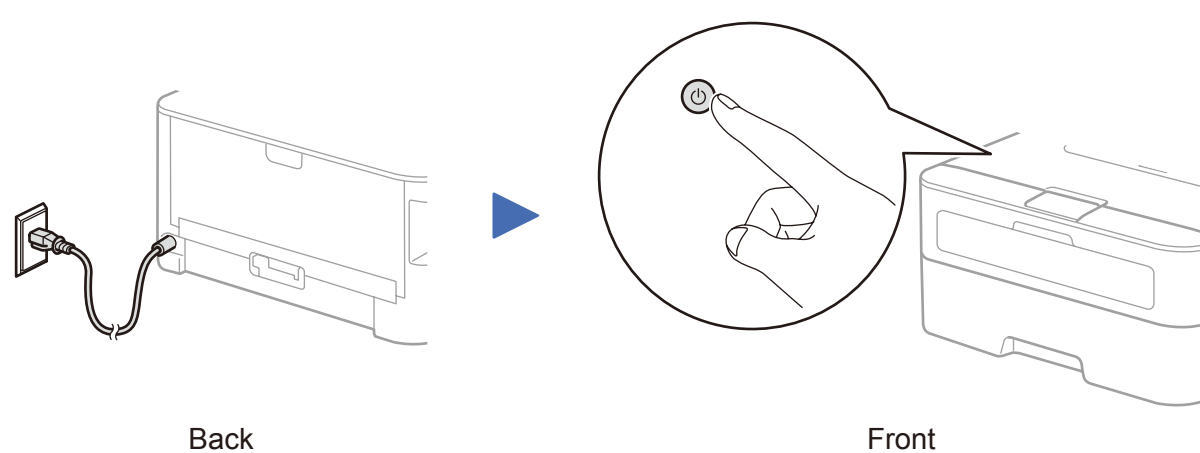
1 Remove the packing materials and install the toner cartridge



2 Load paper in the paper tray

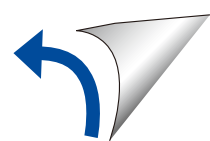


3 Connect the power cord and turn on the machine



Back

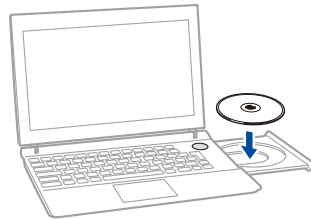
Front




4 Connect the machine to your computer/mobile device

- Windows® PC with a CD-ROM drive, go to step **4A**
- Windows® PC without a CD-ROM drive, go to step **4B**
- Macintosh, go to step **4B**

4A Configuration using the CD-ROM (Windows®)

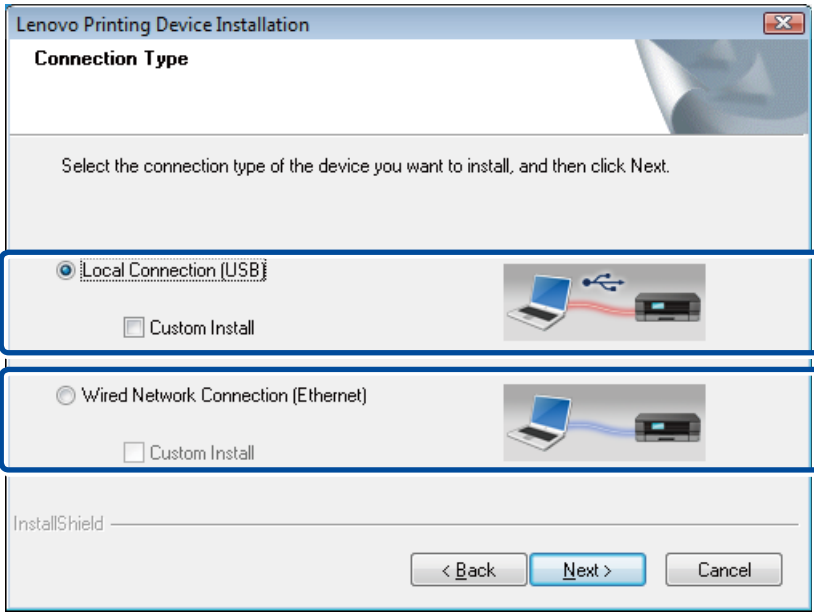


NOTE:
If the Lenovo screen does not appear automatically, go to **Computer (My Computer)**.
(For Windows® 8: click the  (**File Explorer**) icon on the taskbar, and then go to **Computer**.)
Double-click the CD-ROM icon, and then double-click **start.exe**.



Follow the on-screen instructions until the **Connection Type** screen appears.

Connection Type



For USB Connection

For Wired Network Connection
Connect a network cable first.

Follow the on-screen instructions to continue installation.

Finish

NOTE:
If connection is unsuccessful, repeat this step.

4B Configuration without using the CD-ROM (Windows® without CD-ROM drive or Macintosh)



You can download the latest device driver for free from the Lenovo Support Website, enabling you to use your Lenovo machine as a printer.
Visit us at <http://www.lenovo.com/>.

After you download the driver and software package, follow the on-screen instructions until the **Connection Type** screen appears.
Refer to **4A Configuration using the CD-ROM (Windows®)**.