



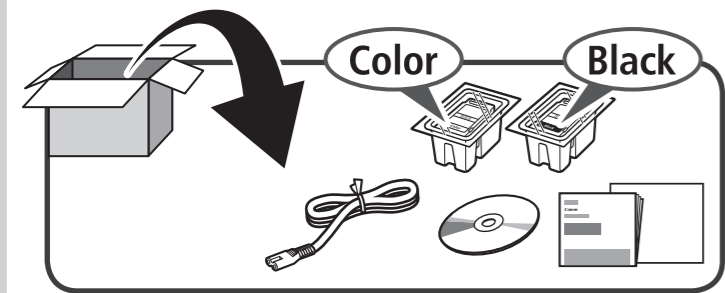
Canon PIXMA MG2580S 多功能打印一体机

入门指南 使用说明书

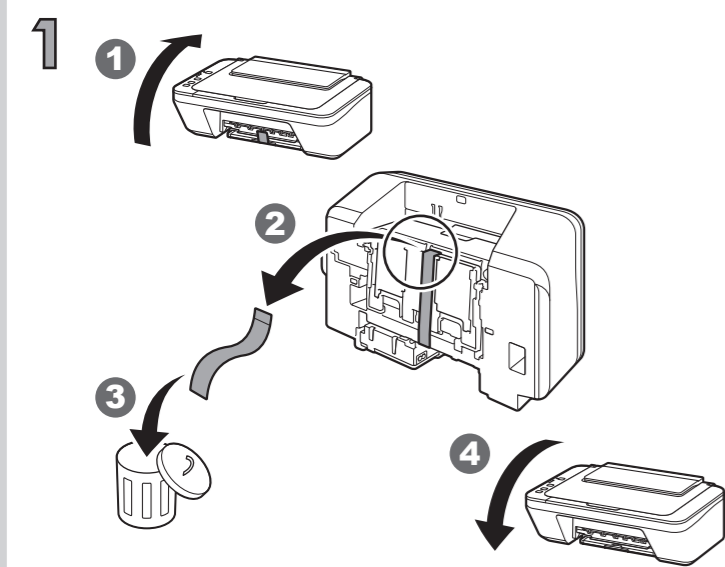
安装、使用产品前，请阅读使用说明书。
该说明书请保留备用。
请在充分理解内容的基础上，正确使用。

RMC (Regulatory Model Code): K10392

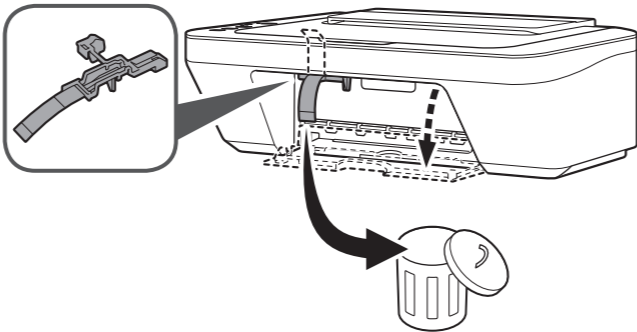
1



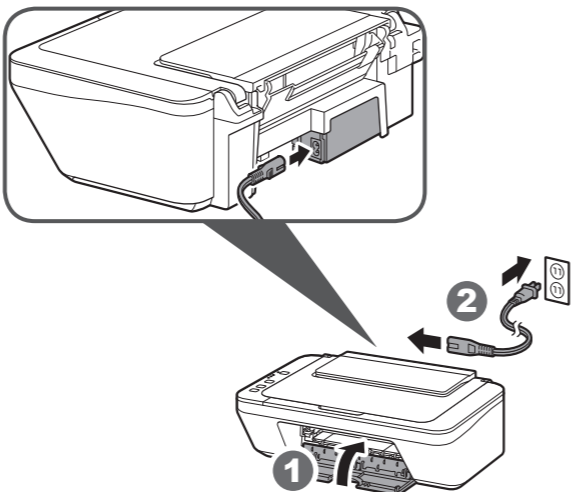
2



2

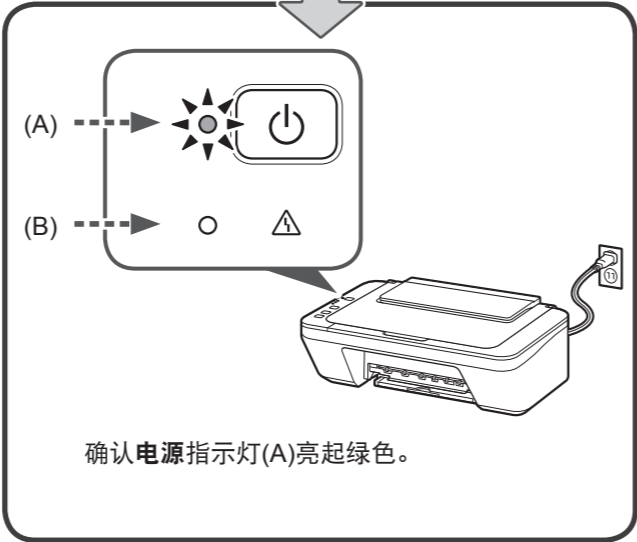
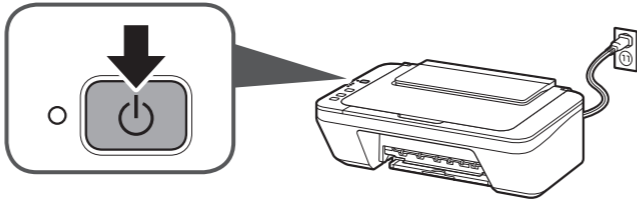


3



请勿提前连接USB电缆线。

4

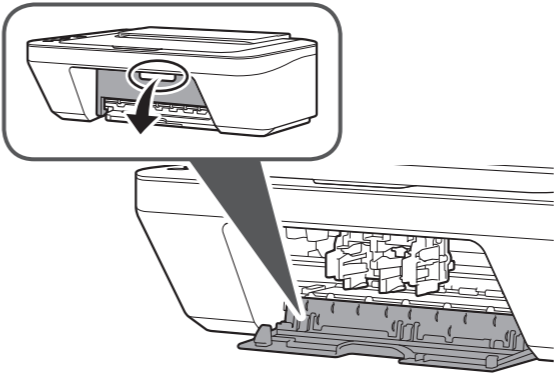


确认电源指示灯(A)亮起绿色。

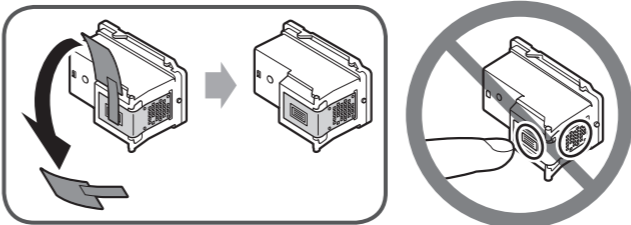
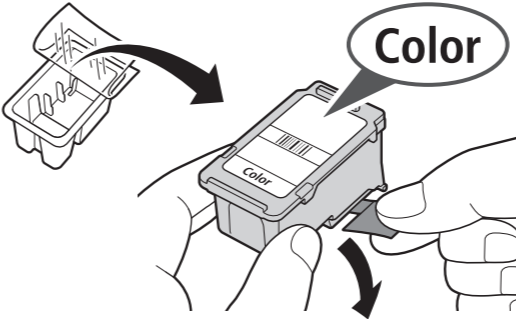
如果警告指示灯(B)闪烁橙色，按电源按钮关闭本机，然后从2开始重新操作。

3

1



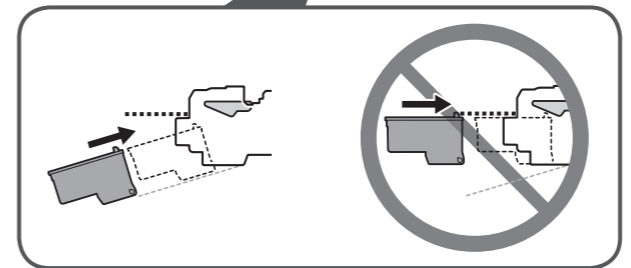
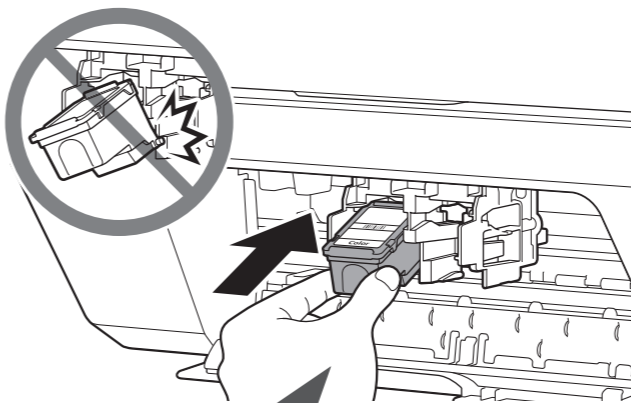
2



小心保护胶带上的墨水。

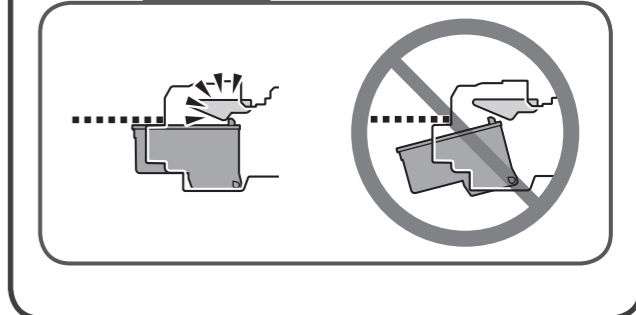
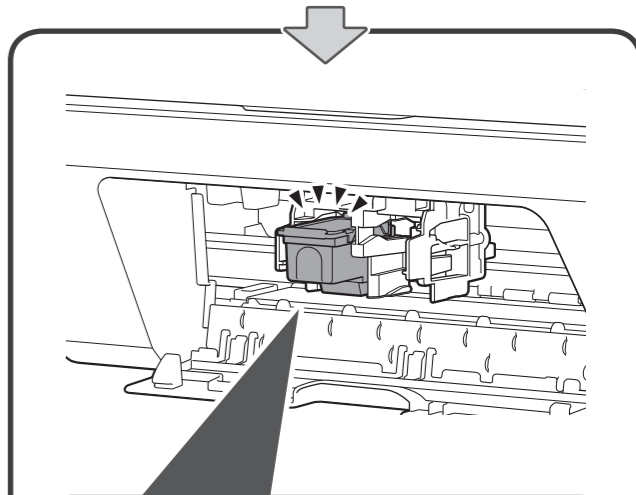
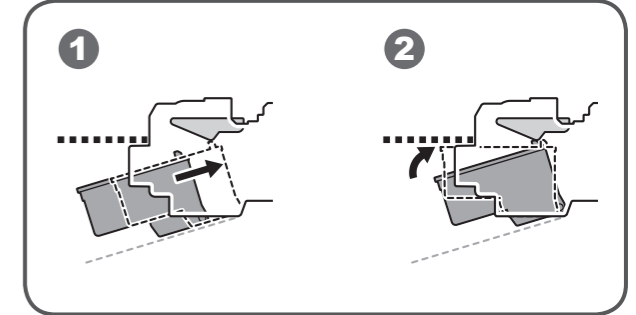
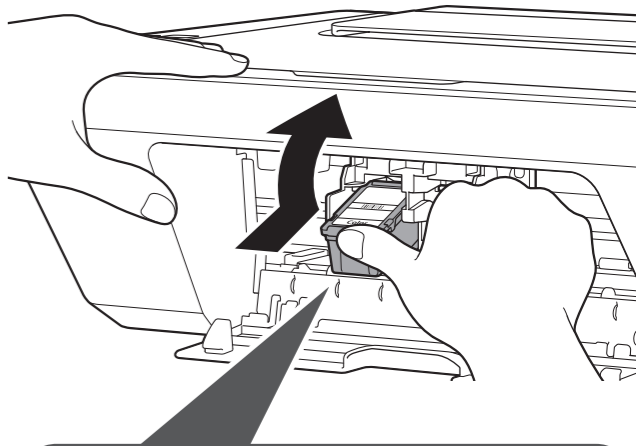
3

按一定角度将FINE墨盒插入插槽。



4

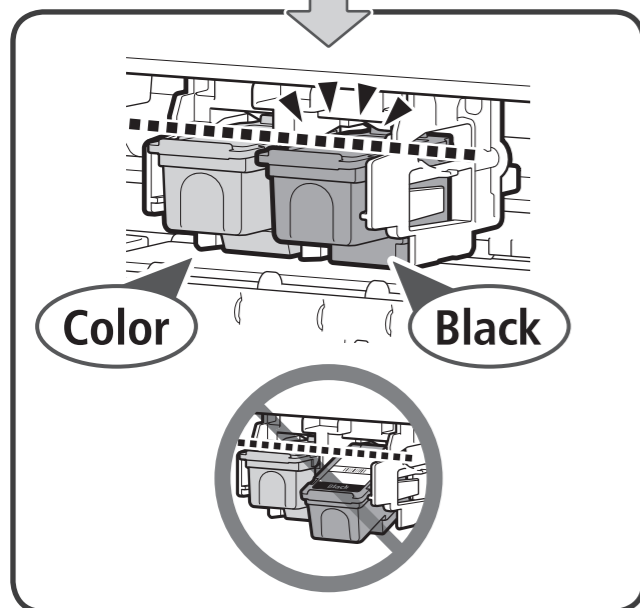
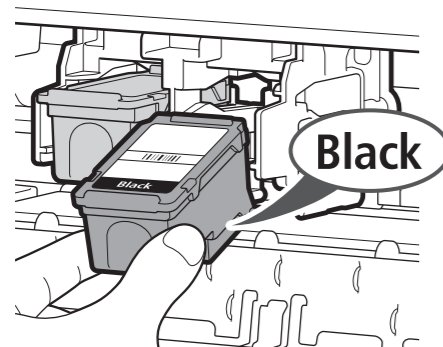
用力向上推动FINE墨盒直到完好入位。



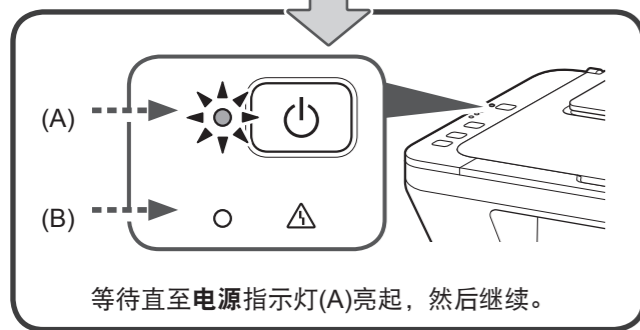
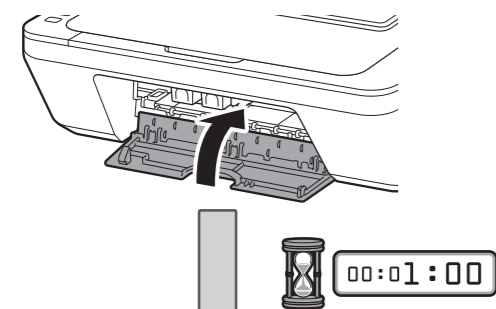
3 5

5

重复 2 到 4 安装其他 FINE 墨盒。



6

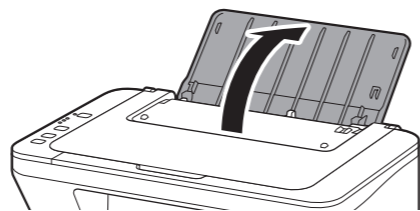


如果警告指示灯(B)闪烁橙色，确认黑色和彩色 FINE 墨盒均已正确安装。

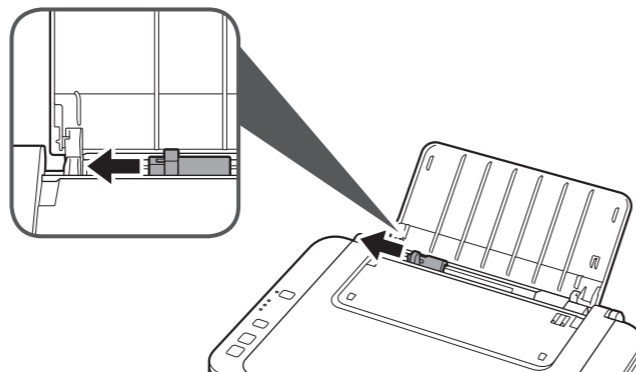
➔ 3 3

4

1

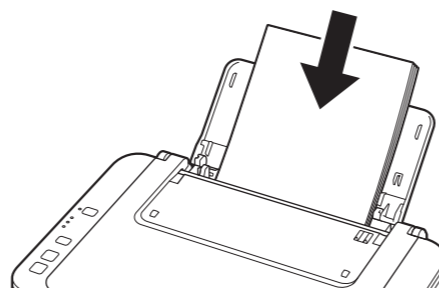


2

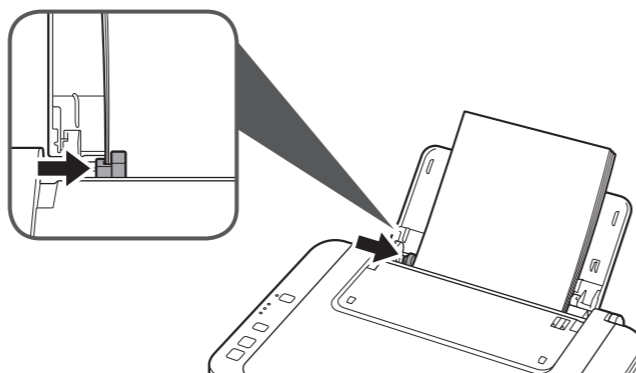


3

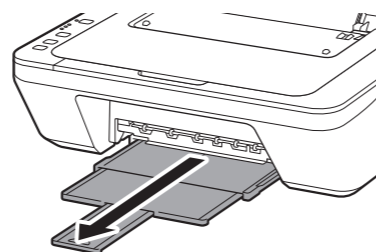
以打印面向上装入纸张。



4

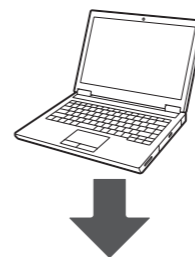


5



5

在您的设备上安装软件。

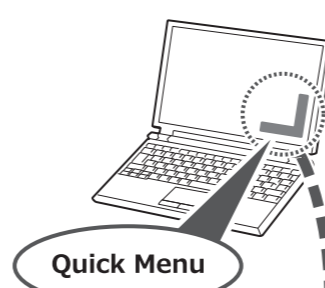


canon.com/ijsetup

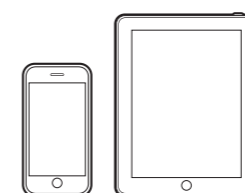
Windows PC



手册



<http://>



canon.com/ijsetup



<http://>



原产地：越南

进口商：佳能(中国)有限公司

地址：北京市东城区金宝街89号金宝大厦2层

邮政编码：100005

修订日期：2015.12