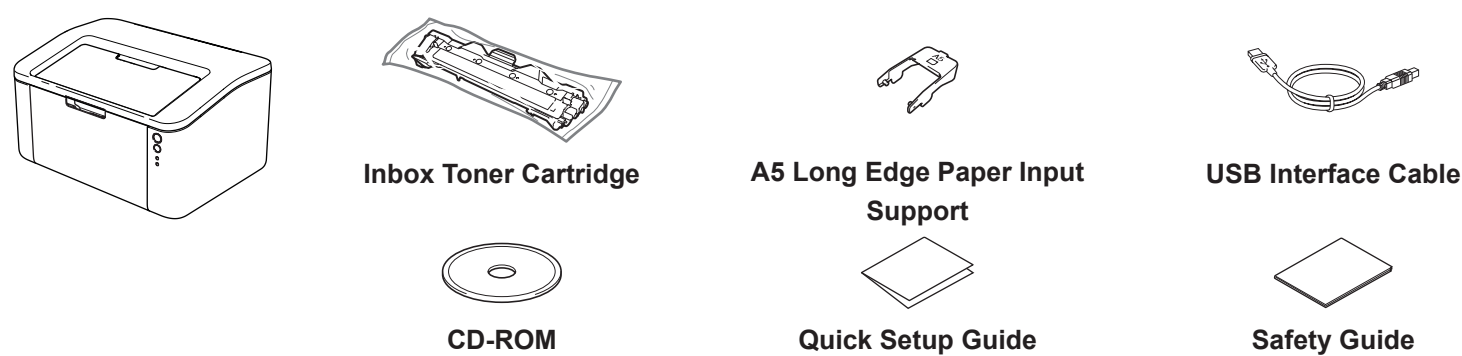


Quick Setup Guide

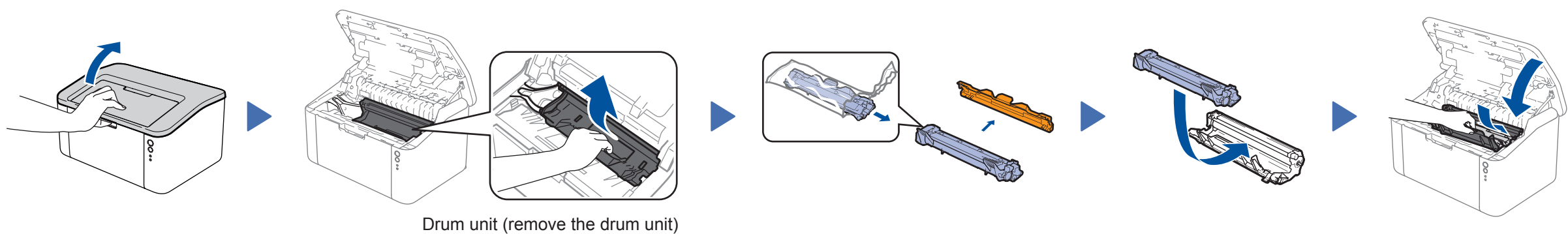
Unpack the machine and check the components



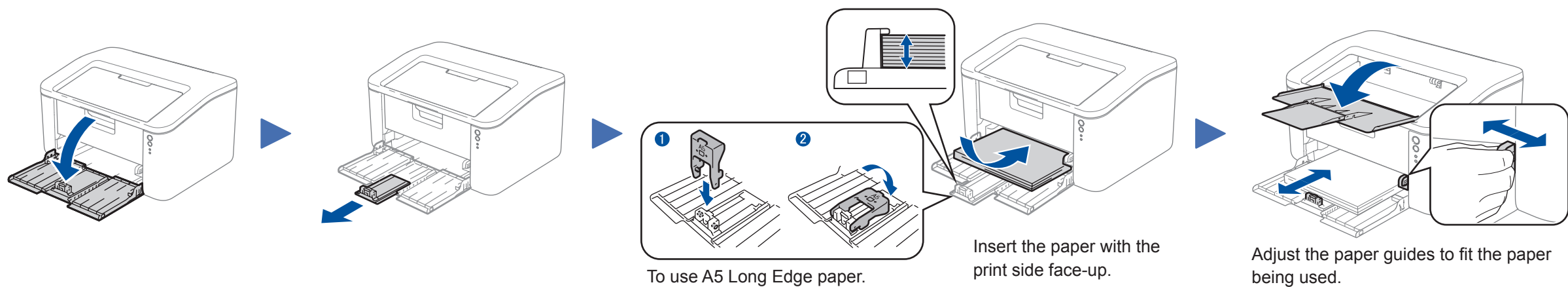
Read the Safety Guide first, then read this Quick Setup Guide for the correct installation procedure.

NOTE:
The USB cable is a standard accessory.

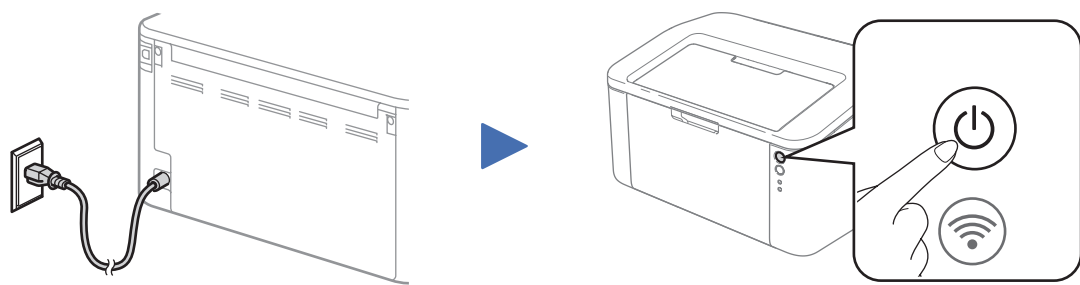
1 Remove the packing materials and install the toner cartridge



2 Load paper in the paper tray



3 Connect the power cord and turn on the machine



Printer LED Indications

| | POWER OFF | READY | SLEEP DEEP SLEEP | WARMING UP COOLING DOWN | RECEIVING DATA DATA REMAINING | TONER LOW | REPLACE TONER | PAPER JAM | DRUM END SOON REPLACE DRUM |
|---|-----------|-------|---------------------|----------------------------|----------------------------------|-----------|---------------|-----------|-------------------------------|
| ! | ○ | ○ | ○ | ○ | ○ | ☀ ○ | ☀ ○ | ☀ ☀ ○ | ☀ ☀ ☀ ○ |
| ○ | ○ | ● | ● Dimmed | ● 1 second interval | ● 0.5 second interval | ● | ○ | ○ | ● |

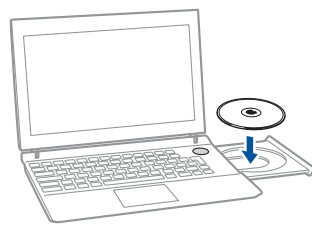
Dimmed: ● Blinking: ☀ or ● ON: ● OFF: ○

For more indications information, please visit our service support website: <http://www.fujixeroxprinters.com/>.



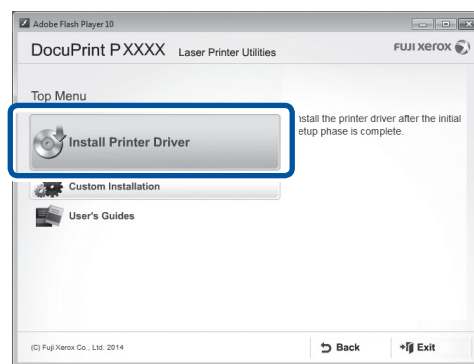


Configuration using the CD-ROM (Windows®)



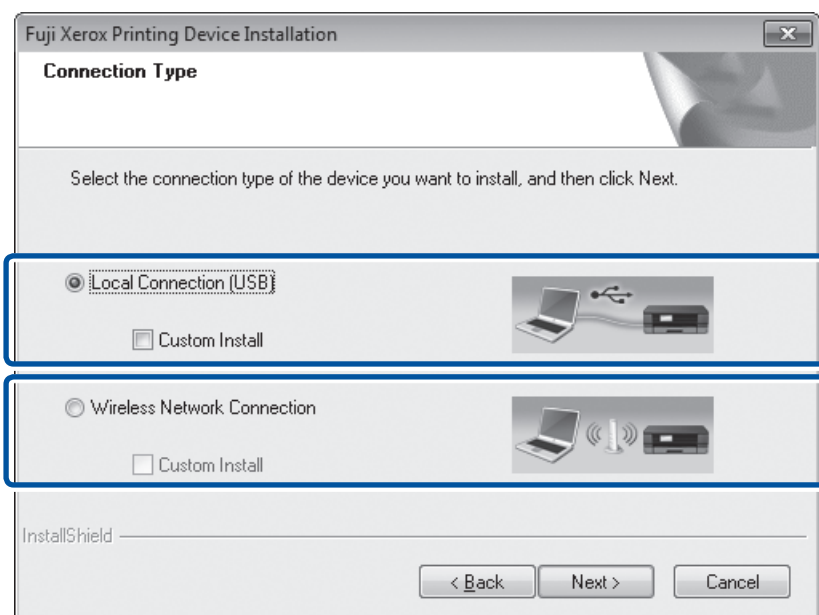
NOTE:

If the Fuji Xerox screen does not appear automatically, go to **Computer**.
(For Windows® 8: click the (File Explorer) icon on the taskbar, and then go to **Computer**.)
Double-click the CD-ROM icon, and then double-click **start.exe**.



Follow the on-screen instructions until the **Connection Type** screen appears.

Connection Type



For USB Connection

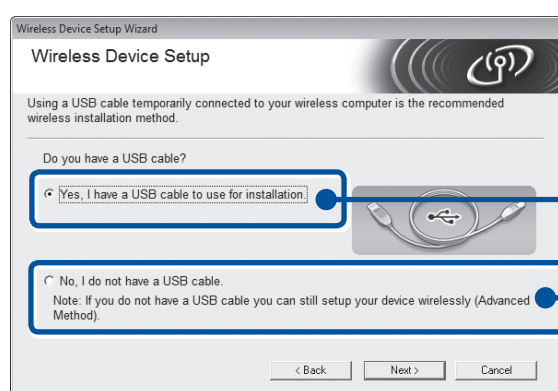
For Wireless Network Connection
We recommend preparing a USB cable to use temporarily during the wireless setup.

Follow the on-screen instructions to continue installation.

Finish



Wireless Network Connection



[Recommended]
Select this option if you have a USB cable to use temporarily for wireless setup.

Select this option if you do not have a USB cable.

Follow the on-screen instructions to continue installation.

Finish



Configuration without using the CD-ROM (Windows® without CD-ROM drive or Macintosh)

Download the full driver and software package by visiting the Fuji Xerox website at <http://www.fujixeroxprinters.com/>.

After you download the driver and software package, follow the on-screen instructions until the **Connection Type** screen appears. Refer to **4A Configuration using the CD-ROM (Windows®)**.

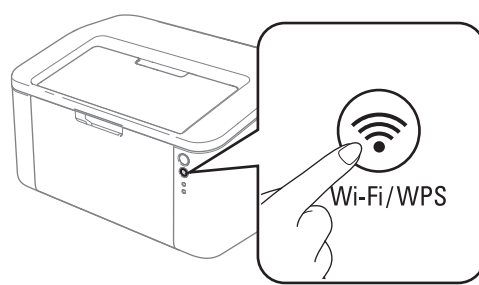


One-push wireless setup for mobile devices

If your wireless LAN access point/router supports automatic wireless (one-push) setup (WPS/AOSS™), you can set up your machine without using a computer.



Press the WPS or AOSS™ button on your wireless LAN access point/router.



Press and hold the **Wi-Fi/WPS** button on your machine for about 2 seconds. The **Wi-Fi/WPS** button will light up when connected.

Wireless setup is now complete.