

TABLET AND DIGITAL PEN DEVICE

User Manual

Windows XP / 7 / 8 / 8.1

Driver Version 8.0

Version : V14.02

Release Date : 2014/02

Contents

TABLET AND DIGITAL PEN DEVICE	1
I. General Information.....	4
i. OVERVIEW	4
ii. PEN TABLET FUNCITONS	4
iii. SYSTEM REQUIREMENTS.....	4
iv. INSTALLING THE DRIVER SOFTWARE ON WINDOWS	4
v. HARDWARE INSTALLATION	5
vi. VERYFYING HARDWARE AND DRIVER FUNCTIONS	5
vii. USAGE TIPS.....	6
viii. MAPPING TO MULTIPLE MONITORS	6
II. Pen tablet configuration	8
i. THE INFO TAB	8
ii. THE BUTTON TAB	9
Button Name	9
Double Click Time	10
Pen/Eraser Toggle	10
Default	10
iii. EXPRESS KEYS DEFINE TAB	11
Default	11
Re-define Express keys	11
Common	11
Mouse	12
Multimedia	13
Other	13
Run	14
Internet	14
Hot Key	15
Show Desktop	15
Switch Application.....	15
3D Switch Application (Win 7/Vista)	15
POP MENU	15
Slider Switch.....	15
Scroll Ring:.....	16
iv. THE SCOPE TAB.....	17
v. HOT CELLS DEFINE TAB.....	21
vi. THE PRESSURE TAB.....	25
vii. THE MONITOR SETTING TAB	26

III.	Storing the battery pen and changing the Pen Battery & Tip.....	28
	Storing the battery pen properly	28
	Changing the pen battery.....	28
	Changing the pen tip:	29
IV.	Question & Answer	30
	How can I get the update software?.....	30
	The tablet cannot work. How can I do?.....	30
	The LED of tablet is blinking continuously?.....	31
	Why the RED LED of Wireless Tablet LED is blinking?	31
	Wireless tablet doesn't work after not using for about 5 minutes?	31
	Why does wireless tablet still not work after turning on the power and even pressing the Resume button?	31
	Why does the LED flash when tapping the tablet by pen?	31

I. General Information

i. OVERVIEW

Welcome to the world of tablet and digital pen! You are able to discover how easy to control your personal computer by using a wireless digital pen instead of a mouse.

The function of the digital pen is able to draw a line very thin, thick, light or dark (the pressure sensitivity). You also can write, sign, annotate documents, and draw, sketch or paint as easily as you would on normal paper and simulate the functions like pencil, mark pen, brush, or watercolor pen by using the commercial software packages such as Adobe® Photoshop™, Corel® Painter™ and Paint Shop™.

ii. PEN TABLET FUNCTIONS

After installing the device driver, your pen tablet features have the following functions:

1. Direct pointing – You can move the cursor to any location on the screen by hovering the digital pen tip over the tablet's surface.
2. Three-buttons mouse commands - Your pen tablet provides all functions of a three- buttons' mouse by using its pen tip and two buttons.
3. Pen scrolling – You can scroll documents and Web pages by pressing the middle button of the digital pen over the tablet's working area.
4. Pressure sensitivity – This feature allows you to emulate various brushes and pencils and you can press down the pen tip harder, lighter, stronger or thicker, and subtle pencil lines you will receive.

iii. SYSTEM REQUIREMENTS


Windows XP / 7 / 8 / 8.1; USB port; CD/DVD-ROM drive

iv. INSTALLING THE DRIVER SOFTWARE ON WINDOWS

Please follow the installation instructions below for Microsoft Windows XP, 7, 8 or 8.1 operating systems:

1. Place the DVD into the optical disc drive and wait for the main installation screen to appear.
2. The main installation screen should appear automatically, or you can manually start the installation by opening **【My Computer】▶【DVD ROM】▶** then click on the **【Setup】** program.
3. When installing the driver, please follow the installation instructions on screen and press the "Enter" key. After the installation has completed, please reboot the computer.

v. *HARDWARE INSTALLATION*

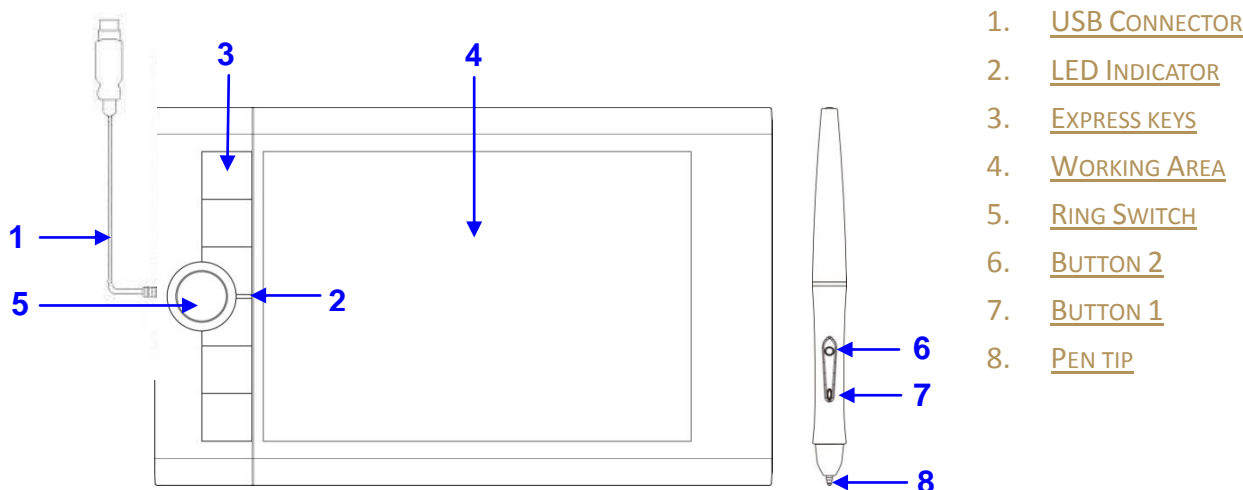
Connecting a tablet with USB interface into the PC after finished the driver installation and restarted the Windows system: To connect a pen tablet into the PC, you will see a small tablet icon () appears in the system tray, which is normally at the lower right corner of the screen.

★ You have to remove the exiting pen tablet driver before installing the driver (including the tablet driver with other brands.)

vi. *VERYFYING HARDWARE AND DRIVER FUNCTIONS*

Please follow the steps to verify if the product is installed properly:

● Features




★ Note: This diagram is for reference only; please follow the actual product features.

The LED light on the tablet is the main indicator for hardware operation. This LED normally stays off, and will only turn it on or off in response to various conditions. Watch the state of the LED on the tablet while you go through below test steps:

1. For battery pen models, tap on any surface with the tip of the pen to “wake it up” if it has gone into standby mode. A built-in power saving function may have forced the pen into the standby mode when it is not in used for a period of time.
2. As soon as the pen tablet itself activates, the LED will be light briefly, and will then go and stay off again.
3. When the tablet detects the presence of the digital pen, the LED will be blinked slowly. This happens either when pen tip is hovering or placing within the working area which above the tablet.

4. When you press a button on the pen barrel, the LED will be lighted up.
5. Hovering and moving the pen in the working area will cause the cursor on the screen to move accordingly.

★ **Note: If the driver has been properly installed, a small tablet icon () will appear in the system tray, which is normally at the lower right corner of the screen.**

vii. USAGE TIPS

1. For battery pen, tapping the pen tip before usage

Before you use the digital battery pen, or after not using it for several minutes, tap the pen tip on any surface of the tablet to “wake” it up from the standby mode.

2. Double tapping

When you double tap with the digital pen (equivalent to a double click with a mouse), try to keep the pen tip away from the tablet’s surface, or at least try to lift the pen tip as fast as possible before the second tap.

3. Storing the digital pen

To store the battery pen, make sure the pen tip does not touch anything, and especially do not let the pen stand in a cup or penholder with the tip down. Even though the possibility is low, press the pen tip will still cause a constant drain on the pen’s battery. Place the pen in a penholder, or turn the pen tip pointing upward or horizontally with the pen tip free of any pressure by other objects.

4. Scrolling function of digital pen

The digital pen has the same function of the normal mouse for scrolling pages. Please press the first button of the digital pen (same function as mouse’s middle click) over the tablet’s working area.

5. Using a pen without an ordinary mouse

You may install the pen tablet and mouse in your computer at the same time. However, only one device is able to work in the meantime.

viii. MAPPING TO MULTIPLE MONITORS

If your computer is equipped with more than one monitor, Tablet will map to the monitors based upon how they are configured in the DISPLAY PROPERTIES control panel.

After you have correctly configured your computer for use with multiple monitors, you can then adjust the tablet mapping by opening the Tablet control panel and changing the appropriate

options.

This enables you to toggle the current tablet mapping and screen cursor between the system desktop or primary display and your other monitors.

See working with Display Toggle.

II. Pen tablet configuration

You may configure the pen tablet by modifying the functions of pen tip and the two barrel buttons, tap **[Start] > [Settings] > [Control Panel]**, and double-tap the **[Tablet Setting]** icon, or tap on the tablet icon (🖊) in the system tray, usually located at the lower right corner of the screen. You may also adjust the pressure sensitivity of the digital pen by determining the scope of the tablet's working area or (re-) program the hot-cells of your pen tablet by modifying device driver.

i. THE INFO TAB

The Info tab displays the version number of the driver and Tablet PC function.



1. Show Icon in System Tray

Select to show the tablet icon (🖊) in the system tray.

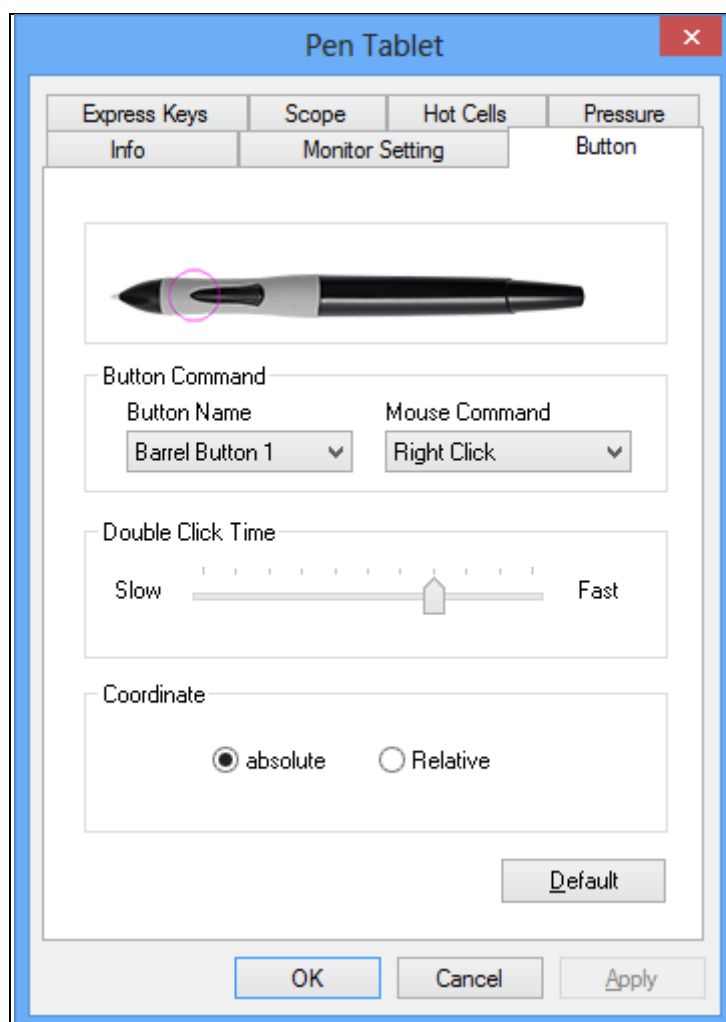
2. Support Digital Ink

Select to support the pressure of digital ink settings.

★ After the Tablet driver is installed in the Windows, the Tablet PC function setting will support pressure in MS Journal, OneNote (2003, 2007), etc.

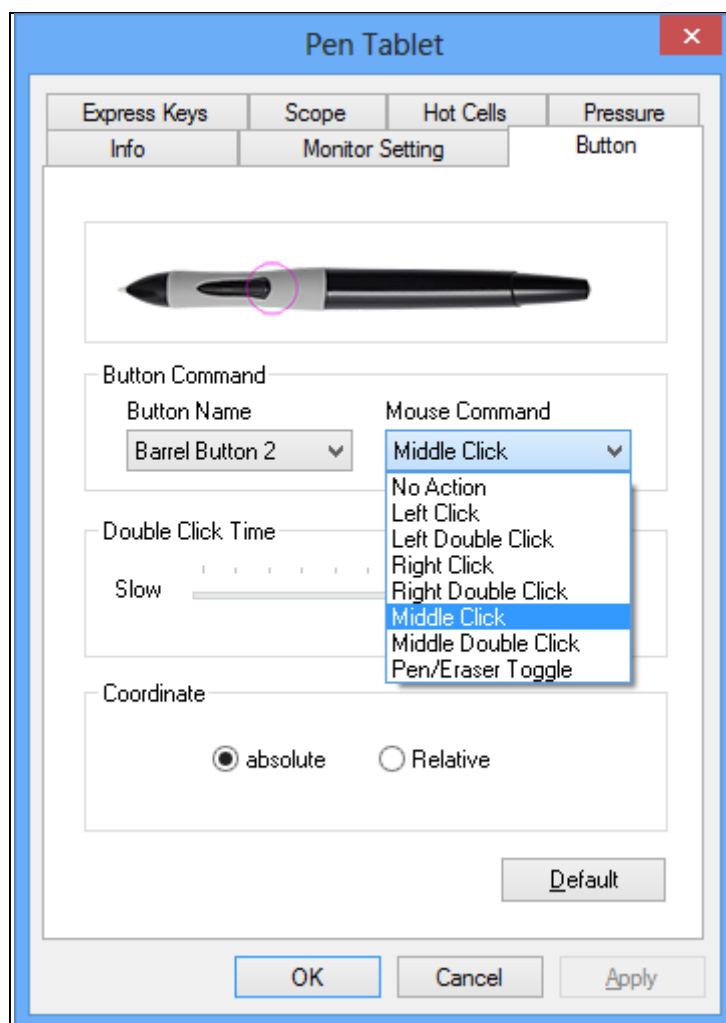
★ If the Tablet PC setting is disabled, the most of art software's pen pressure (Photoshop, Illustrator, Corel Painter) are still working, but the pen pressure will be disappeared in MS Journal, OneNote(2003 、 2007) , etc.

ii. THE BUTTON TAB



✓ Button Name

You may re-program the functions of the pen two-barrel buttons by selecting the button name from the drop down menu and assign a command of a traditional three-button mouse to it. According to the mouse function, you can select no action, left click, left double click, middle click, middle double click, right click, right double click or Pen/Eraser Toggle.



✓ **Double Click Time**

Move the Speed Slider toward “Slow” if you want more time in double tapping with Pen Tip or opposite if move the Speed Slider toward “Fast”. This setting is the same as Double-click Speed on the page displayed by selecting **Start ► Control Panel ► Mouse ► Buttons**. Changing the speed in one place or changing the other in the meanwhile.

✓ **Pen/Eraser Toggle**

Pen/Eraser toggle function only works on the supported graphics software or digital ink software, and must select “Supports Digital Ink” option on the info tab to active this function.

✓ **Default**

Tap on the **Default** button to recover from all the manufacture settings.

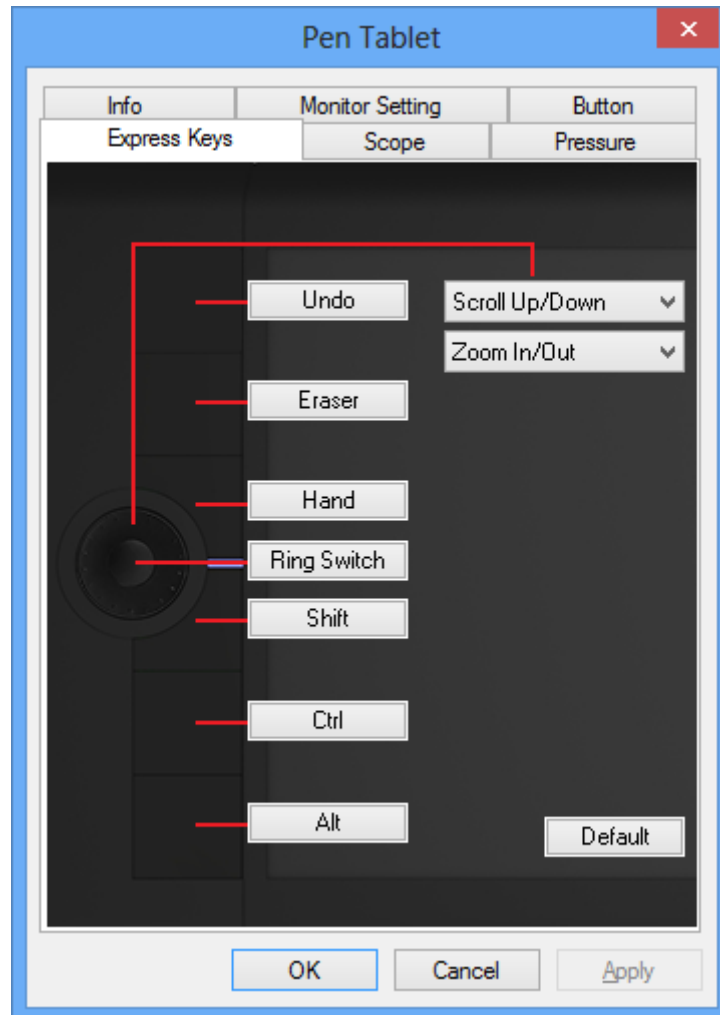
iii. EXPRESS KEYS DEFINE TAB

Express Keys:

For Express Keys & Scroll Ring settings, you can modify from the Express Keys configuration page.

✓ Default

Resume the Express Keys to the default settings.



✓ Re-define Express keys

Select **“Common”**, **“Mouse”**, **“Multimedia”**, **“Other”**, **“Run”**, **“Internet”** and **“Hot Key”** tabs to re-define the settings.

✓ Common

Express key name: Rename the Express Key.

Disable: Disable the Express Key name display on the Pen Tablet control panel.

Default: Resume the Express Key name to the default setting.



✓ **Mouse**

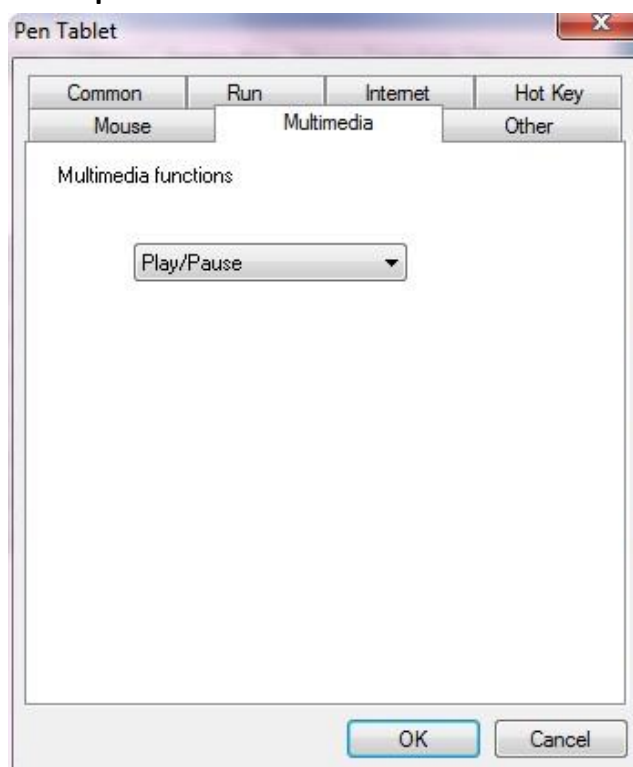
Mouse function: Select Mouse mode settings.

12



✓ **Multimedia**

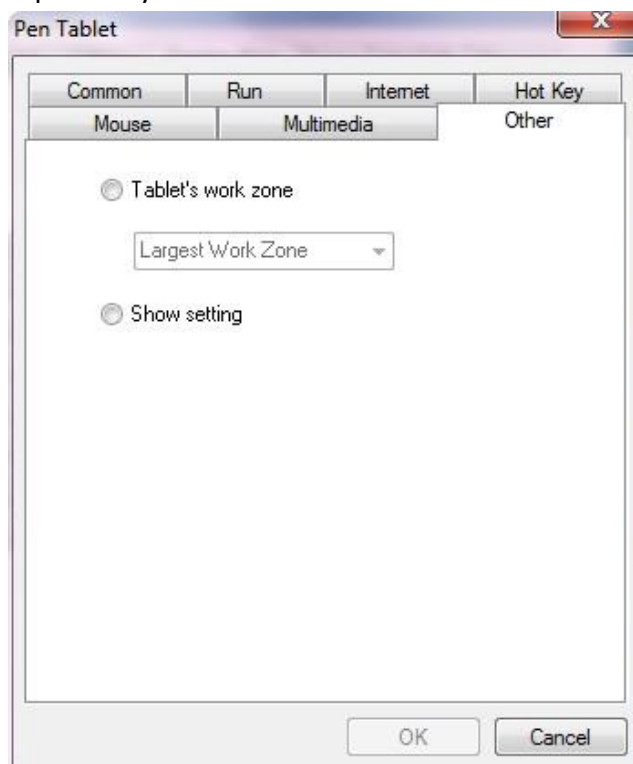
Multimedia function: Select multimedia function settings: “**Play/Pause**”, “**Stop**”, “**Previous**”, “**Next**”, “**Mute**”, “**Volume Up**” and “**Volume Down**”.



✓ **Other**

Tablet's working area: Select “**Largest Work Zone**” or “**Screen Ratio**”.

Show setting: Show Express key name.

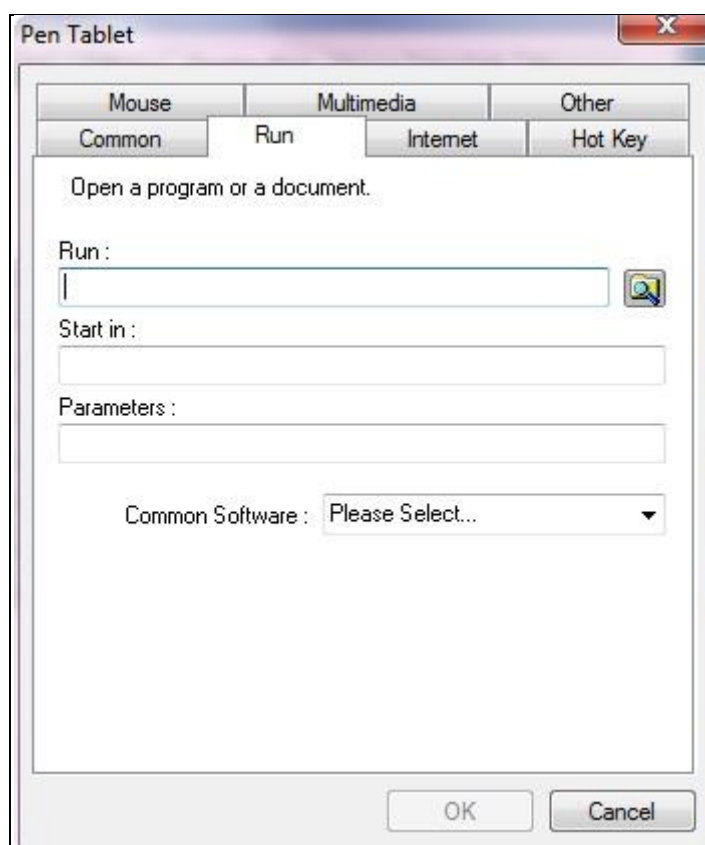


✓ **Run**

Run: Use the browse button to select a file and run, or type in a file name with the complete path.

Start in: This is the initial folder when the program starts the execution.

Parameters: The string type will be passed to the program as parameters. For example, you may type in a document name here and pass it to a word processing program specified in the Run line above.

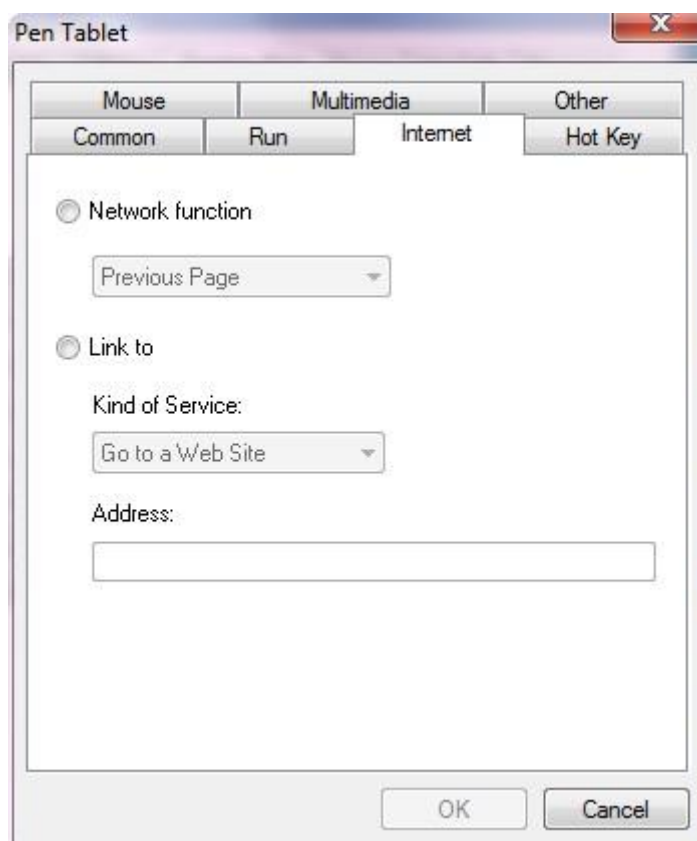


✓ **Internet**

Network function: Select "Previous Page", "Next Page", "Refresh", "Stop", "My Favorite", "IE", "E-Mail".

Link to:

- **Kind of Service:** Select an Internet service to start. For example, browsing website, send an E-mail. The exact program initiated (for example, the browser program) depends on system settings.
- **Address:** The URL address for the selected service. For example, the Website or e-mail addresses.

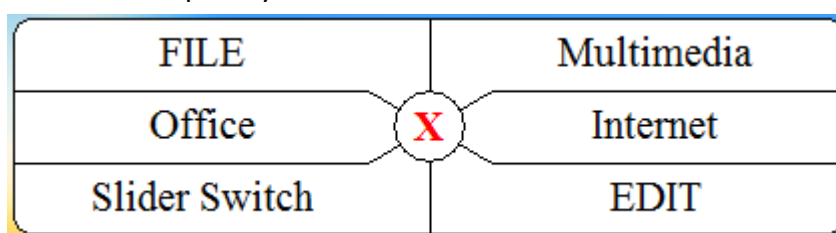


✓ Hot Key

The key combination to press: Select any key such as alphanumeric key or cursor control key, combined with Shift, Ctrl and/or Alt key.

Common function: Select some common used settings.

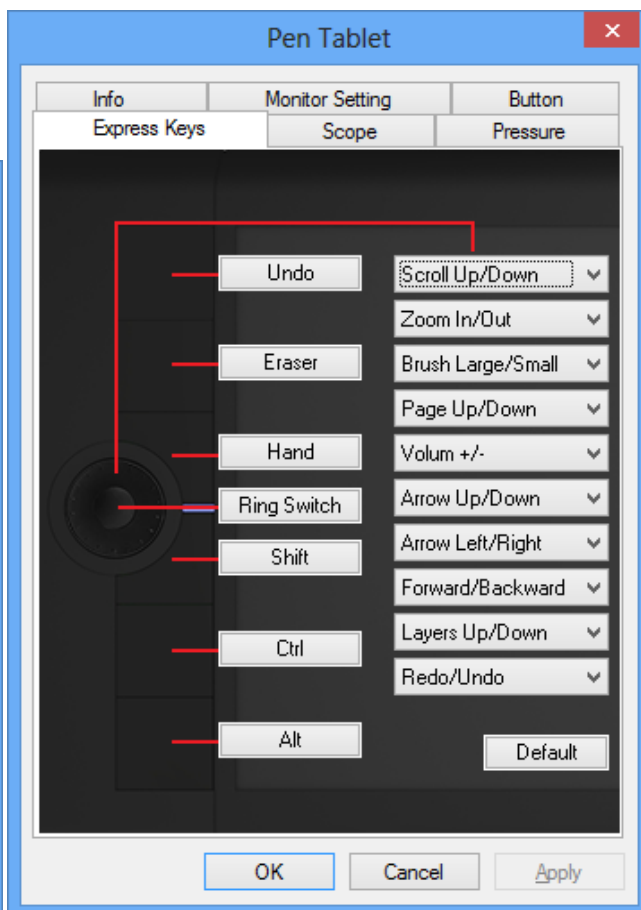
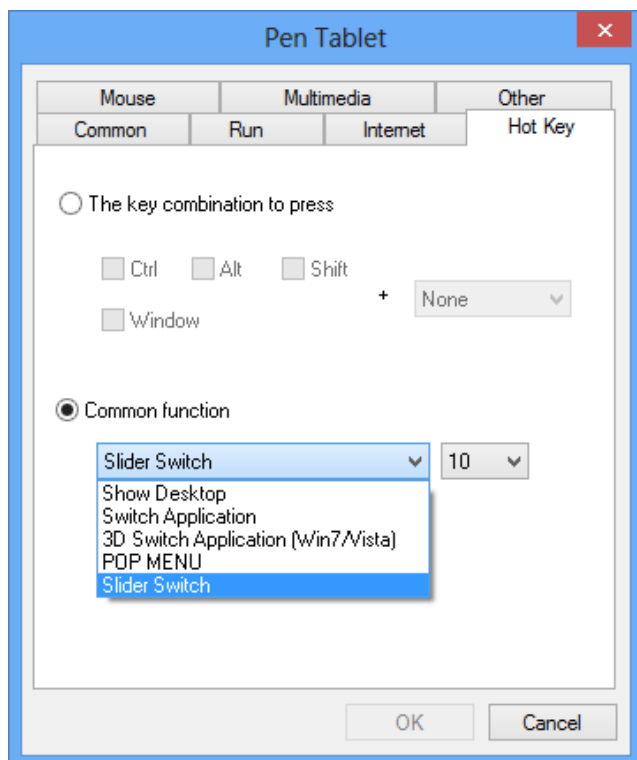
- *Show Desktop:* When the hot-key set to this function, simply press it to display the desktop immediately.
- *Switch Application:* When the hot-key set to this function, simply press it to switch between all the opened windows. (This function only works on the system which supports this feature.)
- *3D Switch Application (Win 7/Vista):* When the hot-key set to this function, simply press it to active Windows Flip 3D function for quickly preview all of your open windows. (This function only works on the system which supports this feature.)
- *POP MENU:* When the hot-key set to this function, simply press it to active the POP MENU for frequently used functions.



- *Slider Switch:* When the hot-key set as Slider Switch, it becomes a rotating ring toggle key,

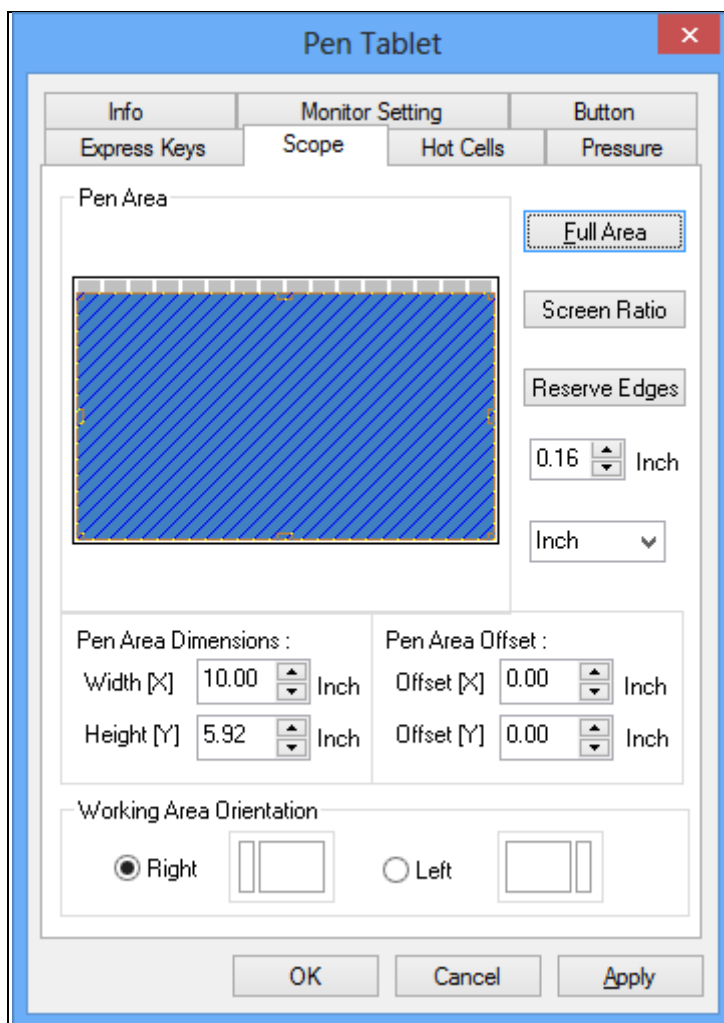
and you can modify the number of groups to be switched. After the modification, press OK to complete this setting and you can change the group order on the Express Keys page.

- **Scroll Ring:** To Rotate the Scroll Ring to the left or right, the system will be reacted by the current Slider Switch settings. And the functions of clockwise and counterclockwise direction are opposite.

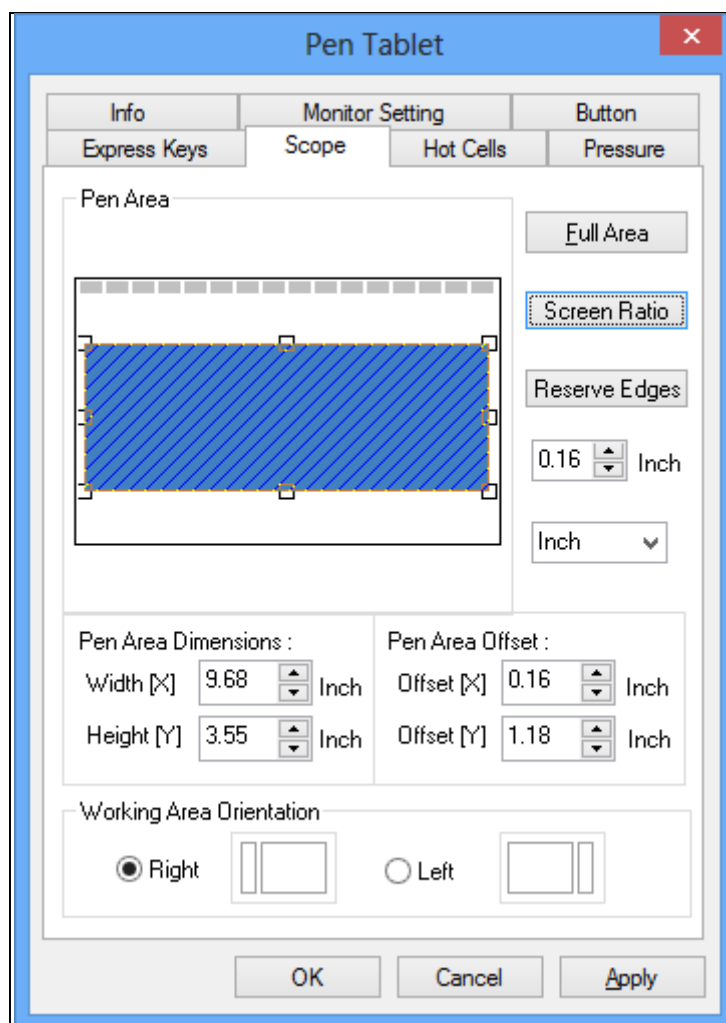


iv. THE SCOPE TAB

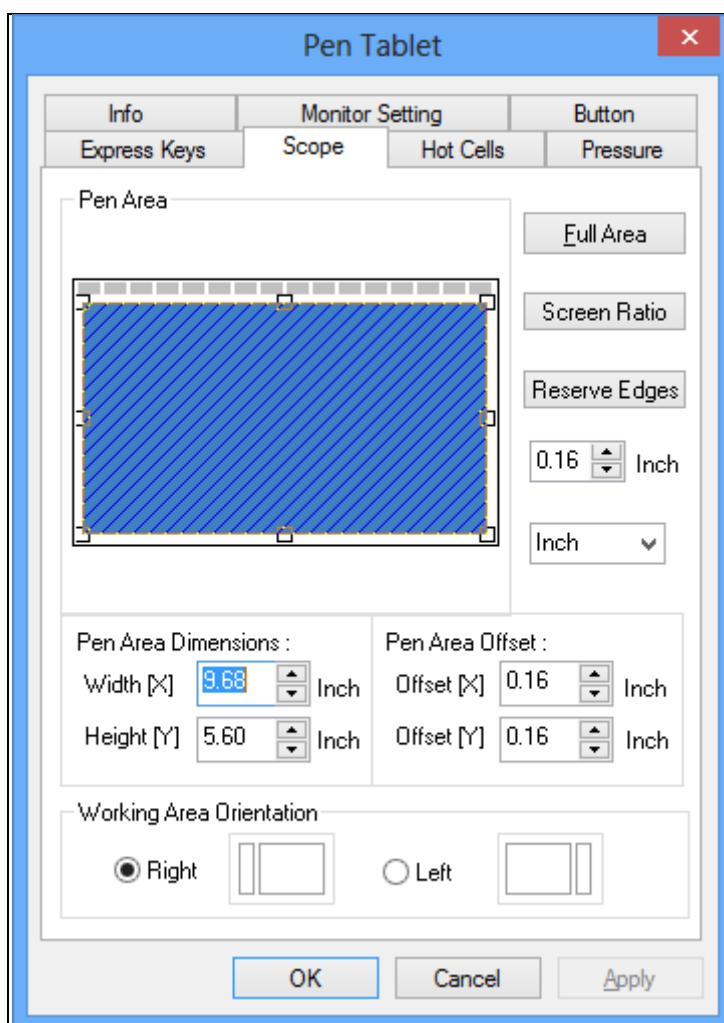
1. **Full Area:** Tap on the Full Area button to select the largest possible working area.



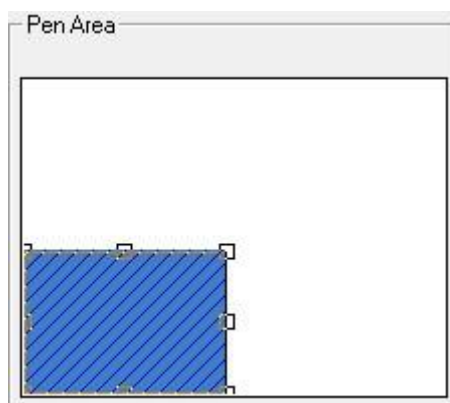
2. **Screen Ratio:** Set the tablet working area same as the screen size by clicking the button of screen ratio.



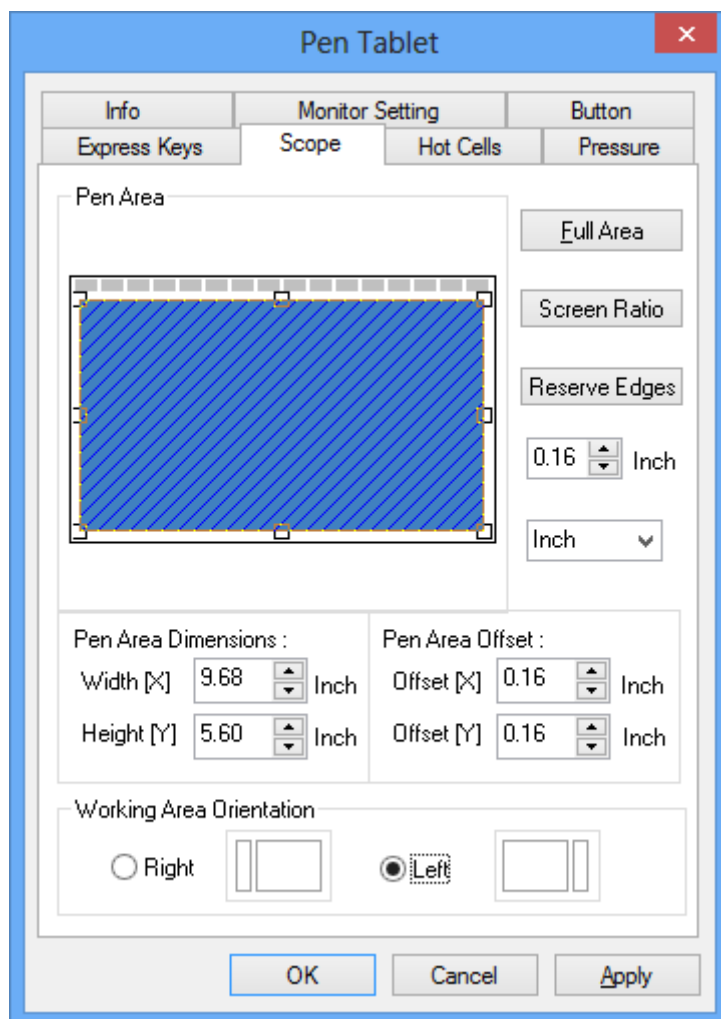
3. **Reserve Edges:** Tap on the Reserve Edges button to allocate space for the tablet's hot cells.

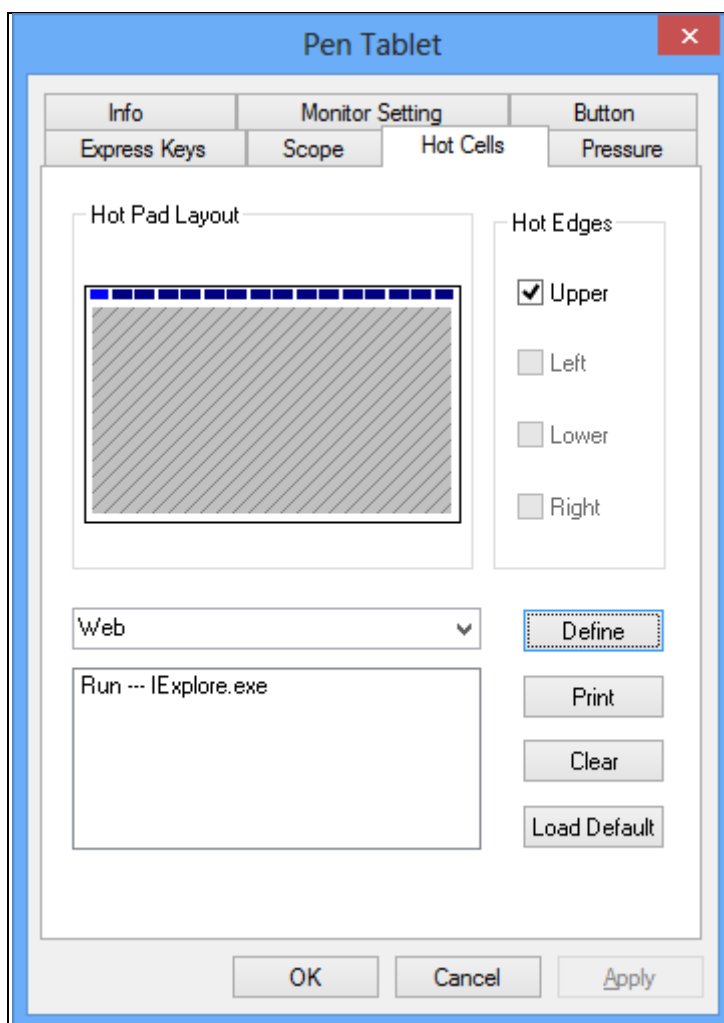


4. **Pen Area Dimensions:** Indicates the current height and width in the Pen Area Dimensions. You may also type in new values here to change the dimensions of the tablet working area.
5. **Pen Area Offset:** Indicates the horizontal and vertical distances of the upper left corner of Pen Area from the upper left corner of the maximum Pen Area. You may also set their values by typing in the numerical values here.
6. **Pen Area:** The Working area can be adjusted by moving the space.



7. **Working Area Orientation:** The default Working Area Orientation is “Right”. If you would like to change the Express Keys on the left-side, select “Left”.

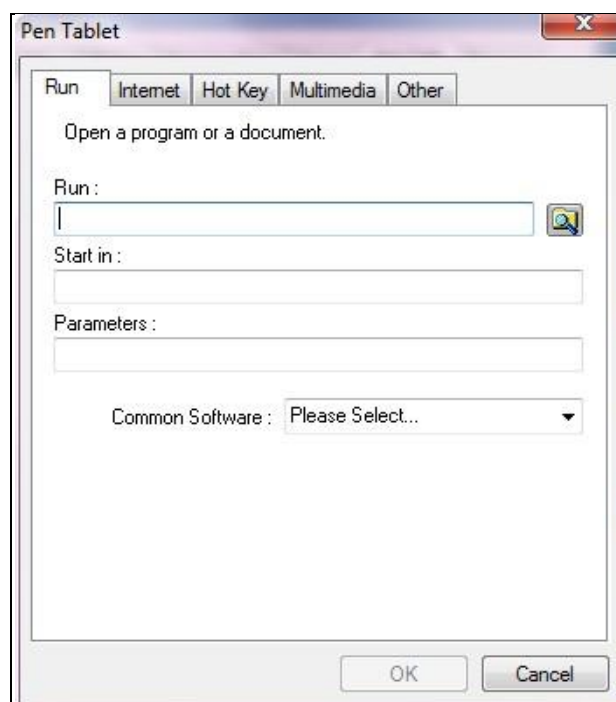


v. *HOT CELLS DEFINE TAB*

1. **Hot Pad Layout:** In Hot Pad Layout area, you can select any hot key to see the property by clicking the hot key in the blue map that shows on the digital tablet's location.
2. **Hot Edges:** There are four lines around the tablet for setup of your hot key location.
3. **Print:** Tap on the Print button to print an overview of all hot cell functions.
4. **Clear:** Tapping on this button will clear up the definition of the selected Hot Cell, so there is no action will be taken when the Hot Cell is tapped later on.
5. **Define:** Press the Define key to set the programs locations, Internet or hot key location.

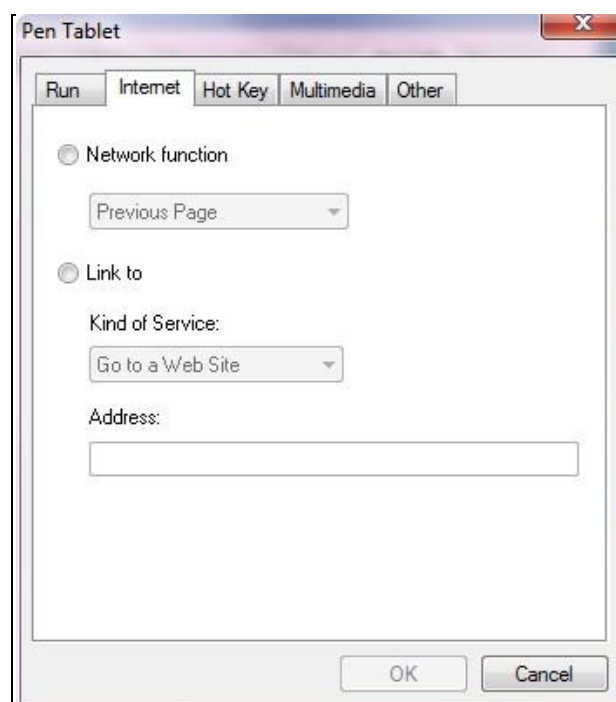
Define Hot Cell - Run

- **Run:** Use the browse button to select a file and run, or type in a file name with the complete path.
- **Start in:** This is the initial folder when the program starts the execution.
- **Parameters:** The string type will be passed to the program as parameters. For example, you may type in a document name here and pass it to a word processing program specified in the Run line above.



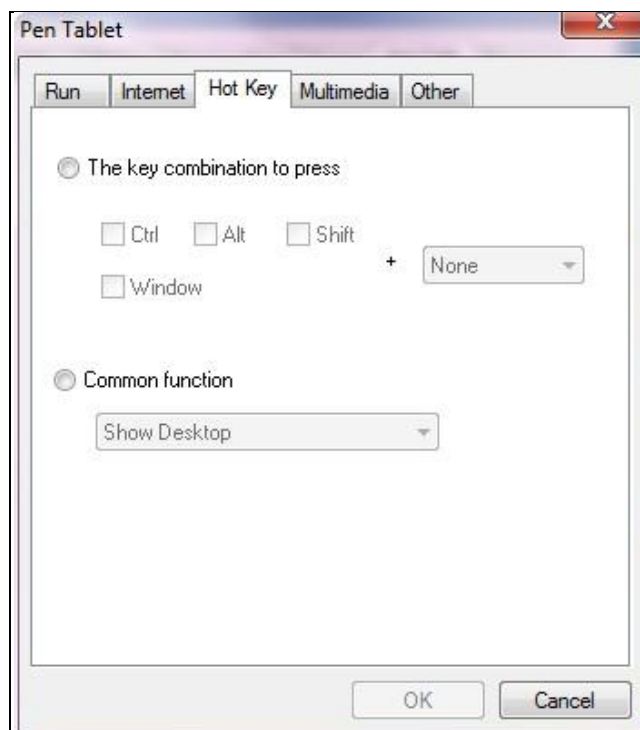
Define Hot Cell – Internet

- **Network function:** Select “Previous Page”, “Next Page”, “Refresh”, “Stop”, “My Favorite”, “IE”, “E-Mail”.
- **Link to:**
 - **Kind of Service:** Select an Internet service to start. For example, browsing website, send an E-mail. The exact program initiated (for example, the browser program) depends on system settings.
 - **Address:** The URL address for the selected service. For example, the Website or e-mail addresses.



Define Hot Cell - Hot Key

- **The key combination to press:** Select any key such as alphanumeric key or cursor control key, combined with Shift, Ctrl and/or Alt key.
- **Common function:** Select some common used settings.

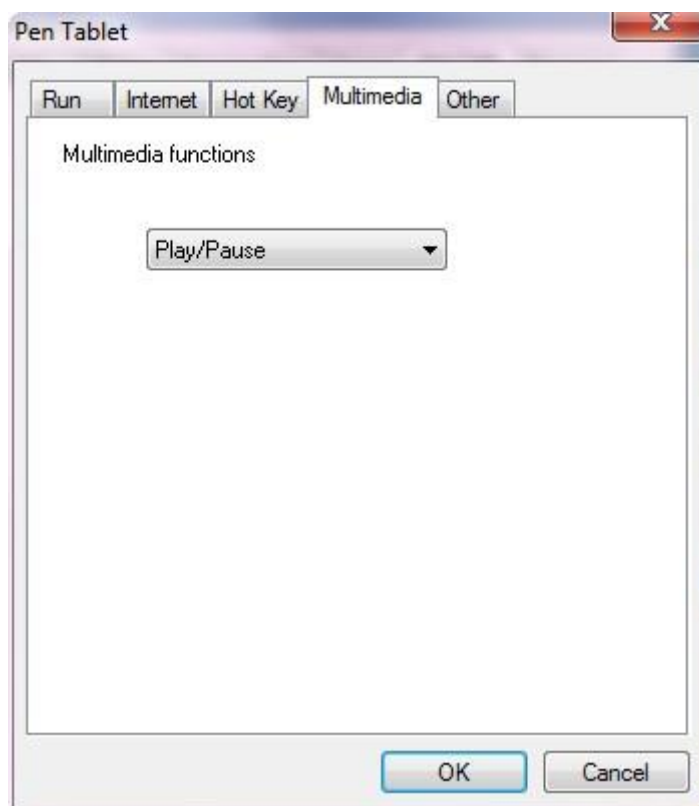
**Define Hot Cell - Other**

- **Tablet's working area:** Select "Largest Working Area" or "Screen Ratio".



Define Hot Cell - Multimedia

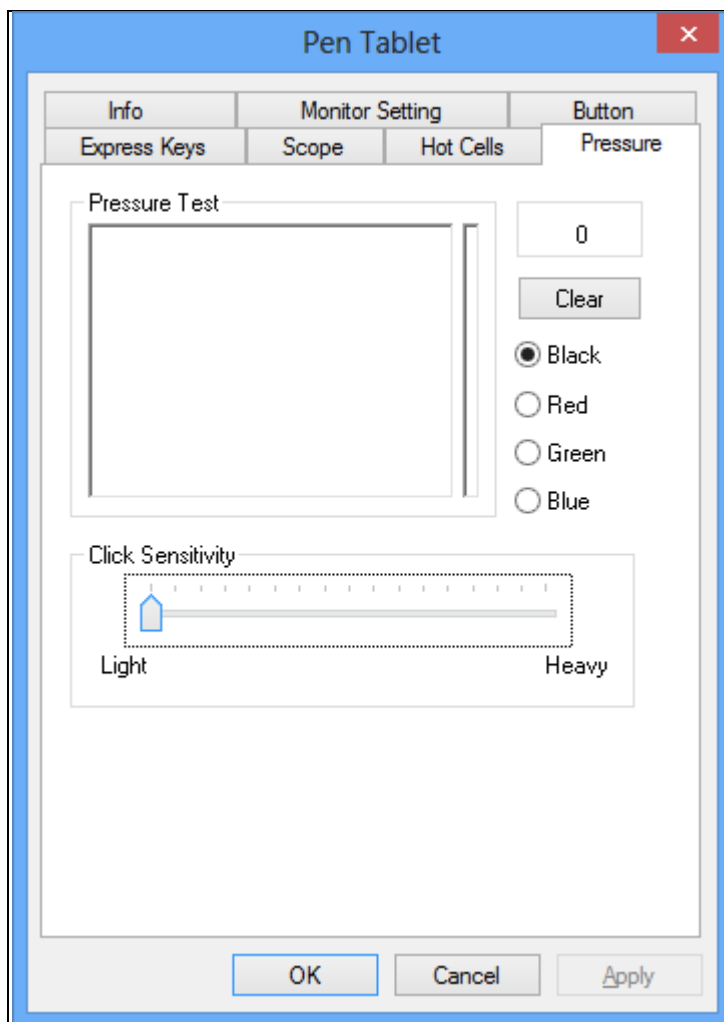
- **Multimedia function:** Select multimedia function settings: “**Play/Pause**”, “**Stop**”, “**Previous**”, “**Next**”, “**Mute**”, “**Volume Up**” and “**Volume Down**”.



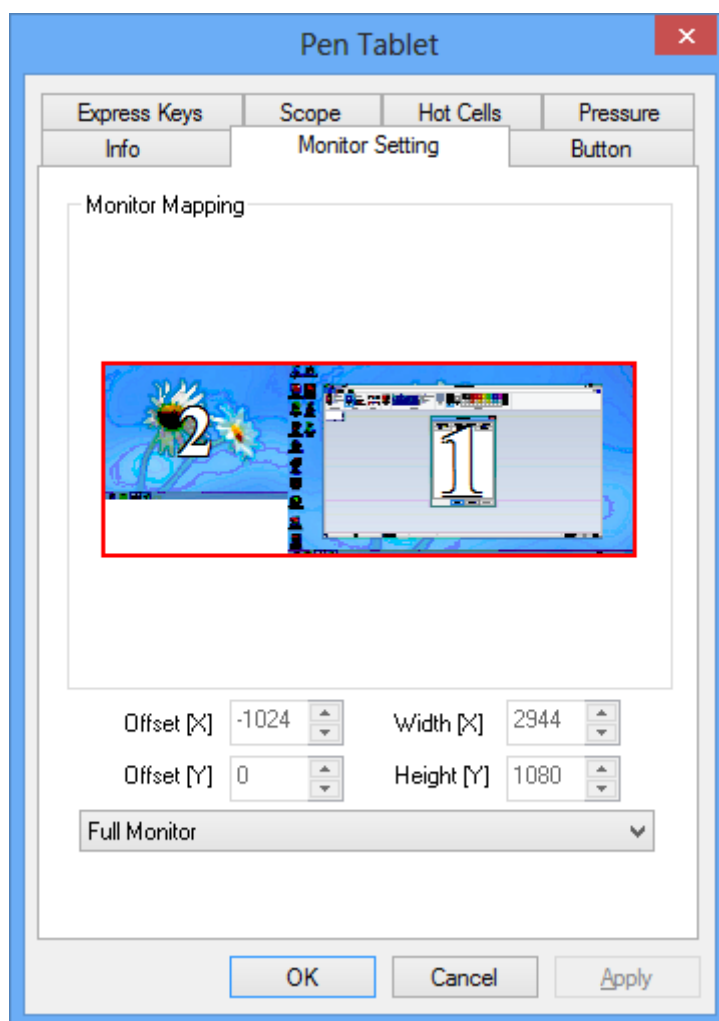
6. **Load Default:** 【Load Default】 Return to original Default ◦

vi. THE PRESSURE TAB

1. **Pressure Test:** There are four different colors for selecting and the pressure sensitivity of the pen tablet can be adjusted in this tab. There is a test area to see the thickness of a line by pressing a certain pressure of pen tip on the tablet pad. The numerical value of the pressure level is shown in the field above the **Clear Button**.



2. **Clear:** Tap on the **Clear button** to clean the space up in the Pressure Test area.
3. **Click Sensitivity:** By default setting, tapping with the pen tip is equivalent to a left click of a mouse. Move the slider in the sensitivity bar to adjust the response of the pen tip. Light means when presses the pen tip that will be reacted very quickly with a slight power, but the heavy function is opposite.

vii. THE MONITOR SETTING TAB

1. **Monitor Mapping:** Select “Full Monitor”, “Portion of Monitor”, “Monitor 1” or “Monitor 2”.



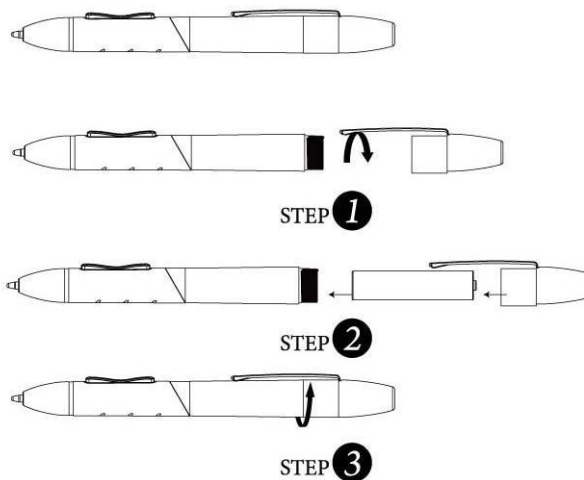
III. Storing the battery pen and changing the Pen Battery & Tip

◆ *Storing the battery pen properly*

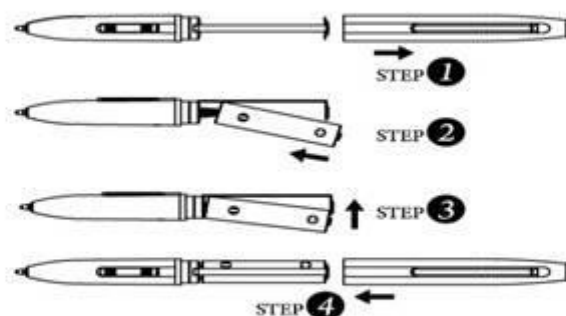
To store the battery pen, make sure that the tip does not touch anything; especially, do not let the pen stand in a cup or penholder with the tip down. Pressure applied to the pen tip will cause a constant drain on the pen's battery, it is recommended to place the pen in a pen holder or store it with the pen tip pointing upward, or place it horizontally with the pen tip free of any other objects.

◆ *Changing the pen battery*

Twist the pen cap and insert the battery.



Pull the upper barrel out of the pen and insert the battery.



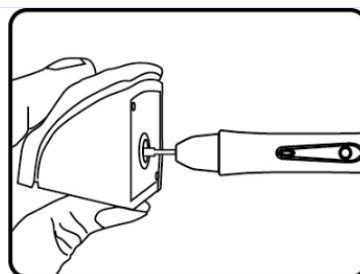
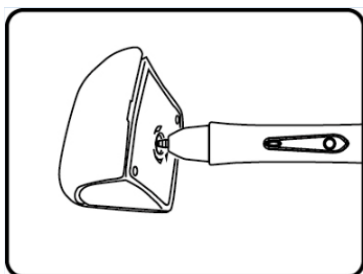
Caution

Do not twist the upper barrel!

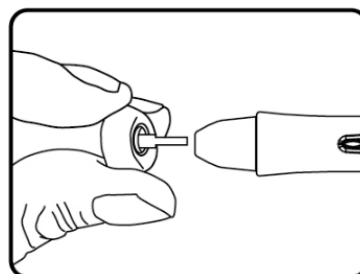
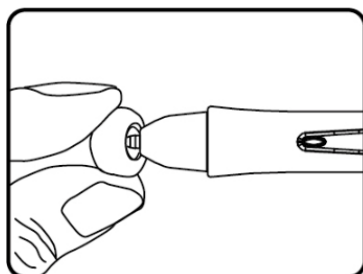


◆ *Changing the pen tip:*

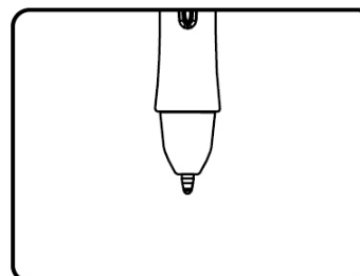
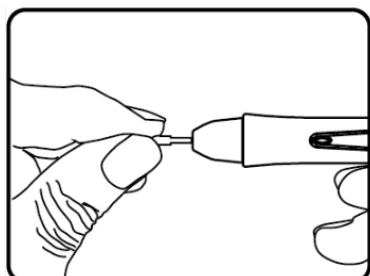
- A. Pull out the pen tip from Digital pen by using a Pen Clip
Penholder and Pen Clip (2 in 1)



Normal Pen Clip



- B. Push the pen tip into the Digital pen



IV. Question & Answer

◆ *How can I get the update software?*

You can download the new driver from our website.

- A. Uninstall your old driver: Click [Start] ► [All Programs] ► [TABLET] ► [Uninstall].
- B. Download the latest version of driver in the download section and save it into your hard disk.
- C. Unzip the file in a folder on your hard disk (with Windows built-in unzip utility or a program like WinZip for instance).
- D. Double-click the Setup.exe in the folder where you unzipped the file.

◆ *The tablet cannot work. How can I do?*

Please follow steps as showing below:

- A. Please pull off the tablet's USB plug from the computer.
- B. Remove the Tablet driver from the system.
- C. Re-connect the Tablet's USB to the computer.
 - a 、 Check whether the tablet's LED is blinking or not? If the LED unlighted, that means your tablet is fault.
 - b 、 Test your wireless digital pen on tablet working area, if it can work as a mouse, which means the hardware is OK. If it doesn't work, please change the battery with a new one.
 - c 、 After changed a new battery for the pen, if it still not working, that means the hardware is fault.
- D. You can download the latest version of driver directly from our website.
- E. After installing the new version of driver, the system will require you to restart your computer.
- F. After restart your computer, on bottom right of the screen, you can find the tablet icon (🖊) within there.
 - a 、 If you can't find the tablet icon (🖊) on the bottom right of the screen, it means the driver fail in startup, It might cause by an incompatible issue.
 - b 、 Check from [My Computer] ► [Properties] ► [Hardware] ► [Device Manager], if there is an exclamation mark occurs, it means the installed driver of tablet is incompatible with the windows system. If you have this problem, please contact us for more service.
- G. By clicking the tablet icon (🖊) on the bottom right of the screen, you can test the pressure sensitivity to see whether the pen pressure function works or not.

If you do not have the pen pressure, it means the pen might be faulty.

◆ *The LED of tablet is blinking continuously?*

It means that the USB port of your PC has a bad connection or power is not stable. Please re-plug in your USB/dongle again. If still not working, please change to another USB port.

◆ *Why the RED LED of Wireless Tablet LED is blinking?*

It is a low battery reminder; please change the new battery in time.

◆ *Wireless tablet doesn't work after not using for about 5 minutes?*

It's because the wireless tablet stays into the sleeping mode. You have to wake it up by pressing the resume button. If the tablet is not in used for too long, you might need to restart it by switching the power button.

◆ *Why does wireless tablet still not work after turning on the power and even pressing the Resume button?*

Please check if the LED is on and off right away when power is turned on. If the LED is not on, then please change the battery of tablet and digital pen. After changing the battery and the tablet and pen still don't work. Please kindly send the tablet and dongle back to where you purchased for repair.

◆ *Why does the LED flash when tapping the tablet by pen?*

Please check if the distance is too far between dongle from wireless tablet or it's because of the working environment. If so, please auto bind the dongle again. If tablet can't bind to dongle, please kindly send it back to where you purchased for repair. Thank you.