

STT-10

WORK TABLE STEEL LADDER AND HANDRAIL

S T T - 1 0

长期

作业台钢梯及栏杆

Work Table Steel Ladder And Handrail

沈阳铝镁设计研究院

Shenyang Aluminium & Magnesium Engineering & Research Institute

共37张

作业台钢梯及栏杆

Work table Steel Ladder And Handrail

主编单位负责人
PRINCIPAL OF CHIEF EDITORIAL UNIT

主编单位技术负责人
TECHNICAL PRINCIPAL OF CHIEF EDITORIAL UNIT

技术审定人
TECHNICAL READER

设计负责人
PROJECT ENGINEER

设计编制
DESIGNER

目录

目录	页1
目录	2
说明	3
说明	4
说明	5
T90A05立面剖面图	6
T90A05详图	7
T59B07立面剖面图	8
T51B07 T51B09立面剖面图	9
T45B07 T45B09立面剖面图	10
T45B11立面剖面图	11
T59B T51B T45B详图	12
T59C07立面剖面图	13
T51C07 T51C09立面剖面图	14

CONTENTS

Contents	P. 1
Contents	2
Instruction	3
Instruction	4
Instruction	5
T90A05 Elevation &Sectional	6
T90A05 Detail	7
T59B07 Elevation &Sectional	8
T51B07 T51B09 Elevation &Sectional	9
T45B07 T45B09 Elevation &Sectional	10
T45B11 Elevation &Sectional	11
T59B T51B T45B Detail	12
T59C07 Elevation &Sectional	13
T51C07 T51C09 Elevation &Sectional	14

目录
CONTENTS

图集号
Atlas Number
STT10
页 Page
1

T45C07 T45C09立面剖面图	15
T59C T51C T45C 详图	16
斜梯踏步板详图及材料表	17
预埋件详图	18
斜梯间平台类型图 (一)	19
斜梯间平台类型图 (二)	20
斜梯间平台详图 (一)	21
斜梯间平台详图 (二)	22
斜梯间平台详图 (三)	23
T90A05 T59B07 材料表	24
T51B07 T51B09 材料表	25
T45B07 T45B09 材料表	26
T45B11 T59C07 材料表	27
T51C07 T51C09 材料表	28
T45C07 T45C09 材料表	29
LG10A LG10B栏杆图	30
栏杆详图	31
DT吊车平台	32
DT吊车平台详图 (一)	33
DT吊车平台详图 (二)	34
小梯A、B、C详图 (一)	35
小梯A、B、C详图 (二)	36

T45C07 T45C09 Elevation &Sectional	P. 15
T59C T51C T45C Detail	16
Stair tread Detail & Material list	17
Pre-cast element Detail	18
Diagonal ladder platform Types plan(1)	19
Diagonal ladder platform Types plan(2)	20
Diagonal ladder platform Detail(1)	21
Diagonal ladder platform Detail(2)	22
Diagonal ladder platform Detail(3)	23
T90A05 T59B07 Material list	24
T51B07 T51B09 Material list	25
T45B07 T45B09 Material list	26
T45B11 T59C09 Material list	27
T51C07 T51C09 Material list	28
T45C07 T45C09 Material list	29
LG10A LG10B Railing plan	30
Railing Detail	31
DT hoist bench	32
DT hoist bench Detail (1)	33
DT hoist bench Detail (2)	34
Small step ladder A, B, C Detail(1)	35
Small step ladder A, B, C Detail(2)	36

说明

- 一、本图集适用于一般工业建筑内外作业台及地坑,也可用于条件相当的民用建筑。
- 二、本图集可供设计选用和制作安装用。
- 三、本图集内容包括:梯、梯间平台、栏杆三部分。

(一) 梯

斜梯B为槽钢梯梁,斜梯C为槽钢梯梁上端带平台。

T45B11用作工业与民用建筑的疏散梯。

梯踏步板形式分钢板压弯型与钢板焊接型两种,可根据制作条件选定,无花纹钢板时可改用普通钢板加防滑条。

种类 KIND CATEGORY	梯型号 TYPES OF STAIR	坡 度 GRADIENT		宽度 (毫米) WIDTH (mm)	梯梁材料 STRINGER	踏步板 材料 TREAD	梯段极 限高度 STAIR HOSE LIMIT HEIGHT (m)
		角度 ANGLE	高跨比 DEPTH-SPAN RATIO				
直梯 VERTICAL STAIR	T90A05	90°	1:0	500	L75x50x5	圆钢 ϕ 20 ROUND BAR ϕ 20	4.50
斜梯B DIAGONAL STAIR B'S	T59B07	59°	1:0.6	700	[16a]	花纹钢板 CHECKERED PLATE	5.06
	T51B07	51°	1:0.8	700	[16a]		5.04
	T51B09	51°	1:0.8	900	[16a]		5.04
	T45B07	45°	1:1	700	[16a]		5.00
	T45B09	45°	1:1	900	[16a]		5.00
	T45B11	45°	1:1	1100	[16]		5.00
斜梯C DIAGONAL STAIR C'S	T59C07	59°	1:0.6	700	[16a]		5.06
	T51C07	51°	1:0.8	700	[16a]		5.04
	T51C09	51°	1:0.8	900	[16a]		5.04
	T45C07	45°	1:1	700	[16a]		5.00
	T45C09	45°	1:1	900	[16a]		5.00

Instruction

1. The drawing collection is used for work table of general industrial buildings, the pits and corresponding civil building.
2. The drawing collection is used for the selection in the design the fabrication and the installation.
3. The drawing collection includes the ladder, the ladder platform and the railing three parts.

1) Ladder

Diagonal ladder B's stringer is steel channel, diagonal ladder C's stringer is steel channel that it's top has a platform.

T45B11 suits to the escape ladder of industrial and civil building.

The ladder tread is divided into two types, they are steel plate bent and welded. It's choosed by designer according to the fabrication condition, and it can be replaced by common steel plate when no patterned steel plate, but should have non-slip strip additionally.

(二) 梯间平台

斜梯间平台由砖墙挑出的三种,由钢筋混凝土柱挑出的十二种。平台仅适用于宽度为700的梯。固定在砖墙上的平台,其锚梁上应有三米高的一砖墙作为抗倾覆重量,如不满足时应另加锚固措施。

2) Ladder platform

There are three kinds of cantilevered plat forms by the brick wall and twelve by R. C Column. The plantform only suits to the 700mm-width's ladder. And as the platform fixed on the brick wall, there should be 3m-height brick wall as the weight of the obliquity-proofing. If it does not meet with the condition, then should anchored additionally.

说明
INSTRUCTION

图集号
Atlas Number
ST110
页 Page
3

四、编号方法:

(一) 直梯与斜梯编号示例

T45B09-334 45° 梯 槽钢梯梁 梯宽900 梯高3340

(二) 栏杆编号示例

LG10Ba 栏杆 栏杆高1075 型号 挡板(无a即无挡板)

五、选用时必须在设计图中注明梯、平台、栏杆的型号及有节点详图号。

固定钢梯用的埋件定位尺寸及梯梁的制作尺寸均可以梯高跨比计算。

六、结构荷载计算。

直梯与斜梯按踏步板每级承受1000牛集中荷载计算, 梯梁按梯段水平投影面积上承受3500牛/平方米活荷载计算。

梯间平台按3500牛/平方米活荷载计算。

固定栏杆按承受500牛/平方米荷载计算。

七、材料表作材料用量估算用, 梯用料量按梯踏步数进级, 如设计梯高为3150的45° B类梯, 可采用3200梯高的材料量。

固定栏杆按每10米长栏杆的每米平均用量计。

材料表的踏步板均按压弯型扁豆型花纹钢板计算。

八、材料: 圆钢、钢板及型钢采用3号钢, 栏杆钢管采用焊接钢管, 焊条采用T42。

九、制作时注意:

斜梯的首阶高度 h_1 小于图示梯梁下端的切角高度时, 其切角高度应改为 h_1 的尺寸, 否则首阶踏步板将悬出梯梁外。

焊缝厚度除注明者外, 其余均与焊件厚度相同。

十、构件制成后应进行检查, 零件必须齐全, 焊缝不应有裂纹、过烧等现象, 构件表面应光滑无毛刺, 并刷防锈漆一道。

4. Ways of Numbering:

1) Example of vertical and diagonal stair numbers

T45B09-334 45° Ladder Steel channel stringer

Width of ladder

Hight of 3340mm

2) Example of railing numbering

LG10Ba Railing Hight of railing Type

Baffler (no "a" no baffler)

5. When choose to use, we must give chear in detail of the types of ladder, platform and railing and the numbers of relative joint details in the design drawing of any item.

Both the orientation dimension of the built-in parts of fixed steel-ladders and fabrication dimension of the stringer can be calculated with the pitch of the ladder.

6. Load calculation of structure:

Vertical ladder and diagonal ladder's load calculation according to every step of tread 1000N concentrated load. Stringer's according to 3500N/m² live load on the horizontal shadow area.

The ladder platform is calculated according to 3500N/m² live load.

Railing is calculated to 500N/m on the horizontal load.

7. Material list is used to estimate the material's

dosage, and the ladder dosage of material can be one step higher than the quantity of ladder steps. If design type is 45° B of 3150mm-high, than we can use the material list of 3200mm-high's.

Fixed railing is calculated according to one metre's average dosa-ge for every ten metres.

说明
INSTRUCTION

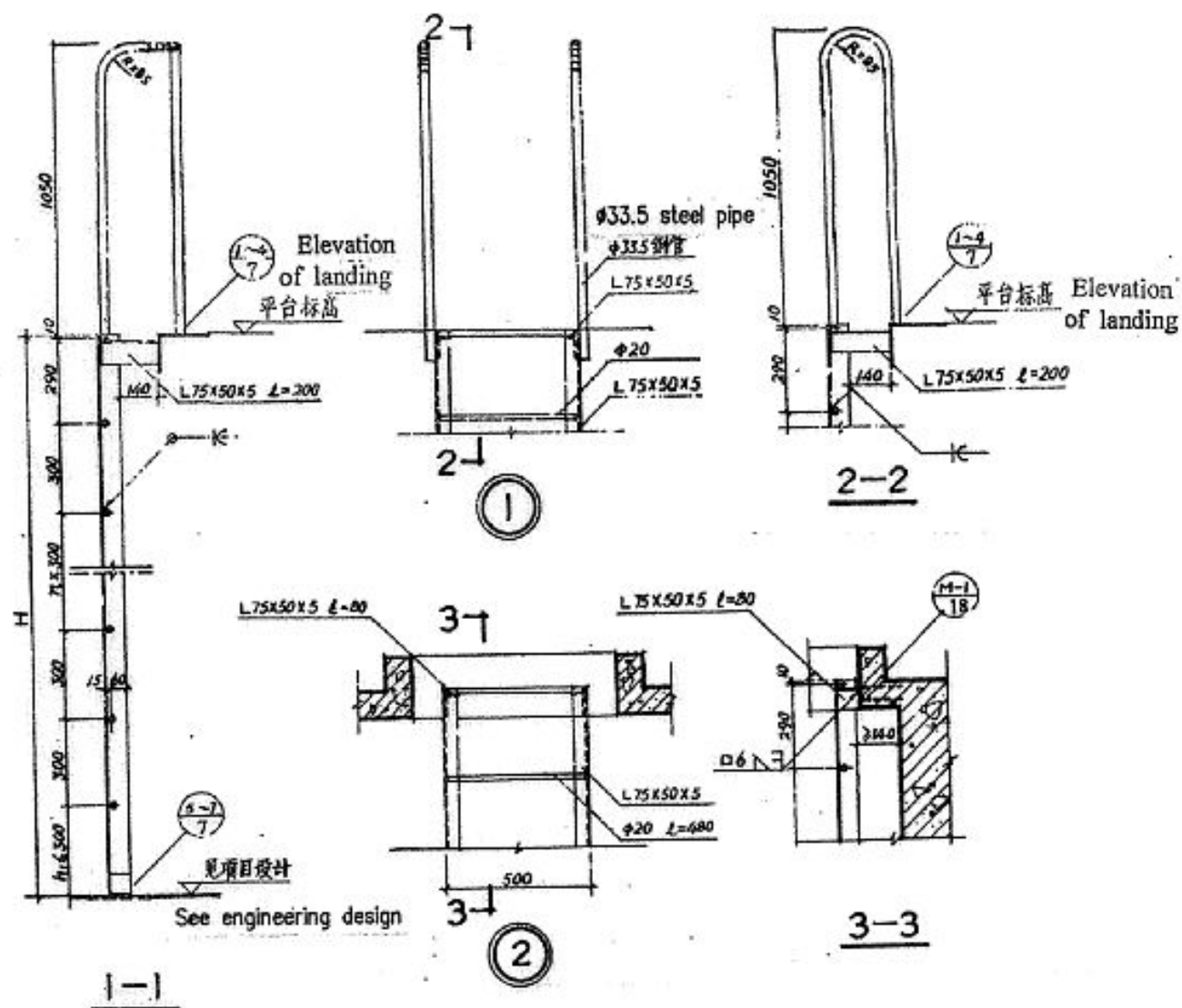
图集号
Atlas Number
页 Page

STT10
4

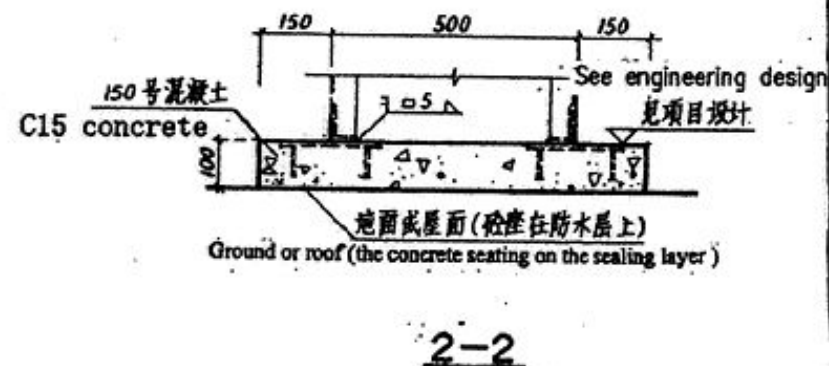
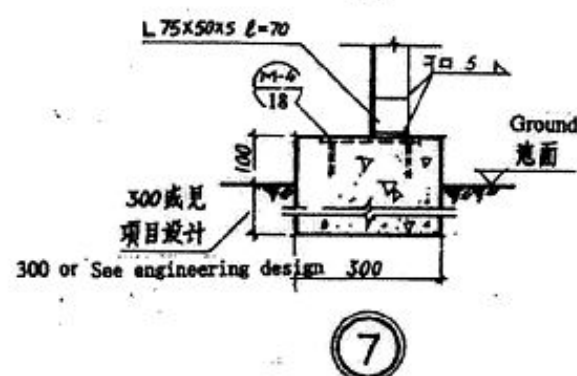
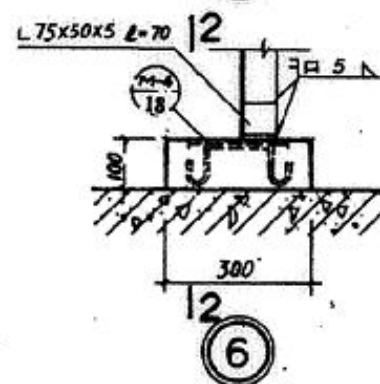
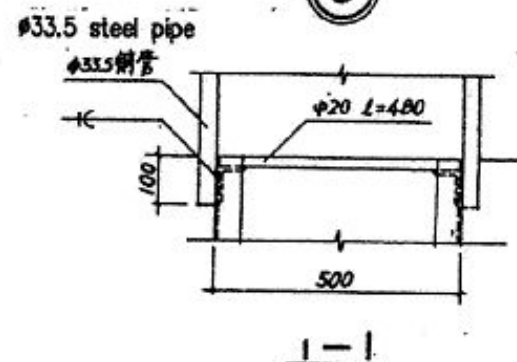
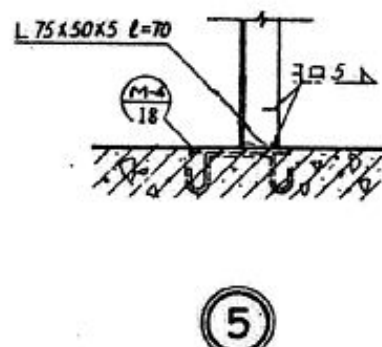
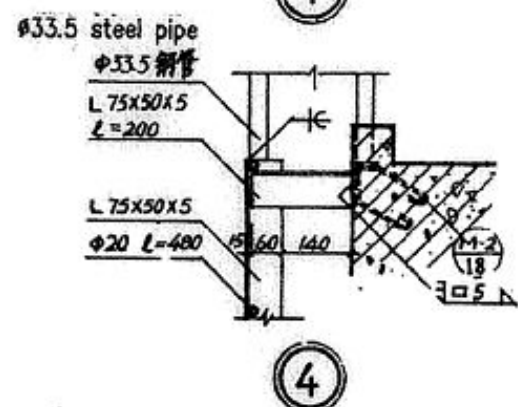
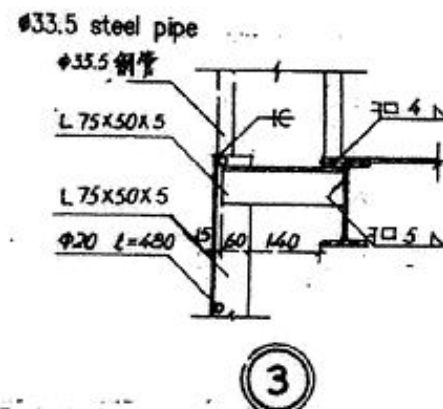
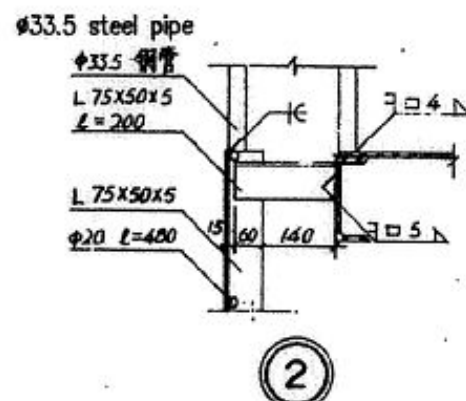
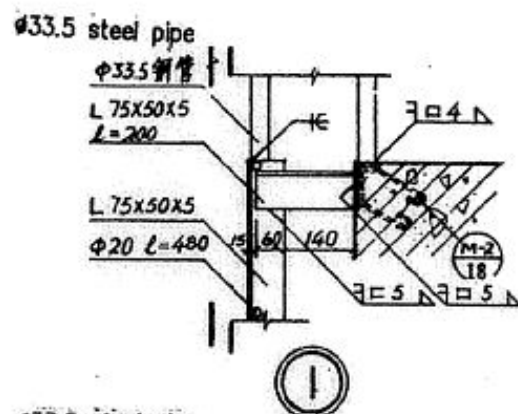
- 十一、构件安装后不应有歪斜、扭曲、变形及其它缺陷，再刷防锈漆一道，面漆两道，油漆种类及颜色由选用者确定。
- 十二、除本图集注明者外，尚应遵照国家现行施工及验收规范的有关规定。

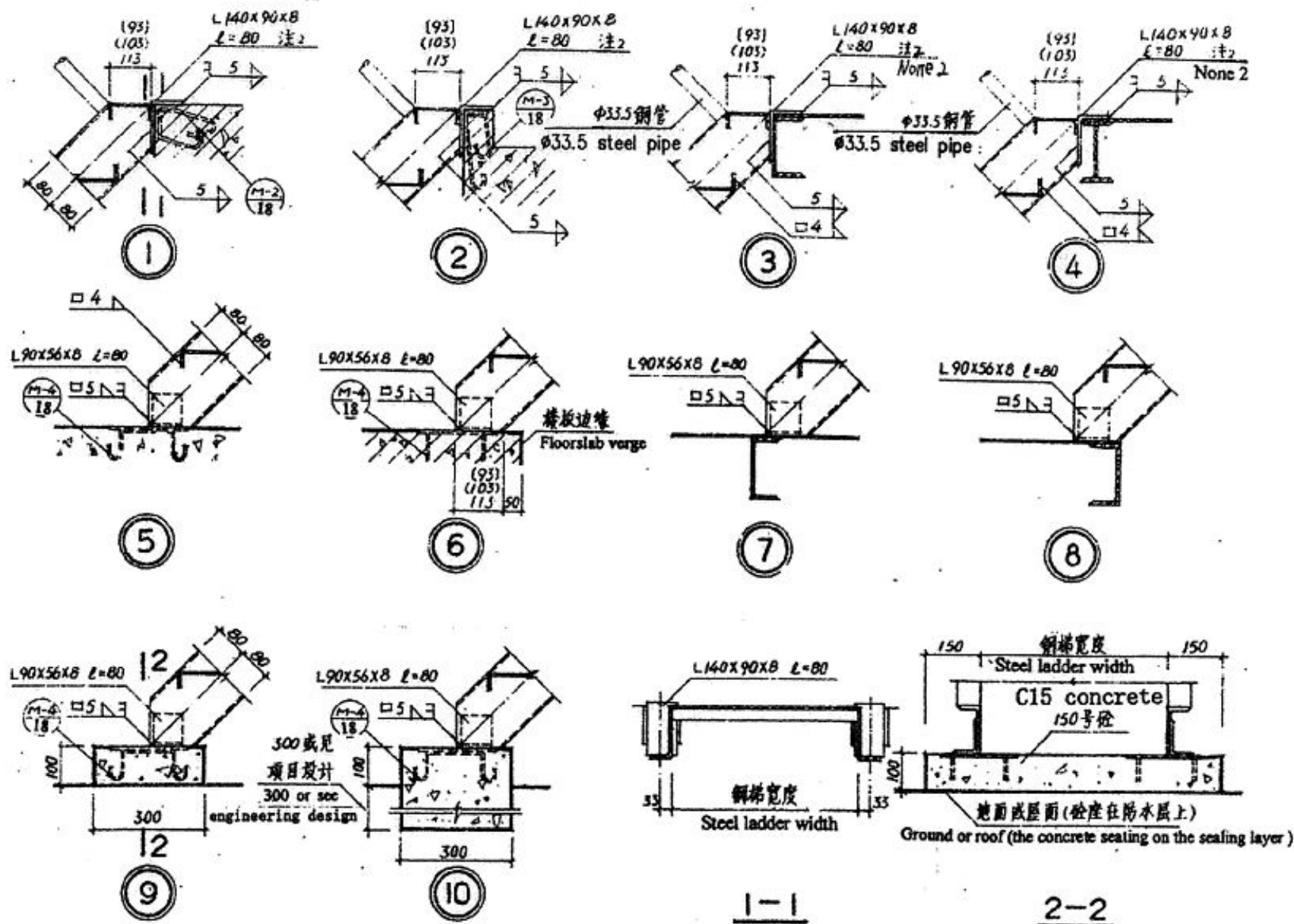
The treads in the material list are calculated according to bent checkered steel plate.

8. Material: round bar, steel plate and rolled steel shapes used all are Mark 3, steel pipes of railing used are welded steel pipe, solder is the T42.
9. Attention in fabrication:
when the height h_1 of the first step of diagonal ladder is less than the corner cut height under the stringer of the drawing example, it's corner cut height should equal to h_1 . Otherwise, the first tread will be out of the stringer.
Leg length of weld on size of weld should be equal to the welding piece, unless otherwise specified.
10. It should be checked after complete the member, hard ware must be completed. the welding should no crack and over burn. The surface of the member should be smooth and no burr, and brush anti-rusting paint once.
11. Member should have no deflection, skew, deformation and others. once more, bursh anti-rusting paint once and enamel paint two times.
The designer can choose the kinds and colors of the paint.
12. Besides the clear indication of this drawing collection, it should conform to the state technical code for work and acceptance.



图集号 Atlas Number	STT10
页 Page	6



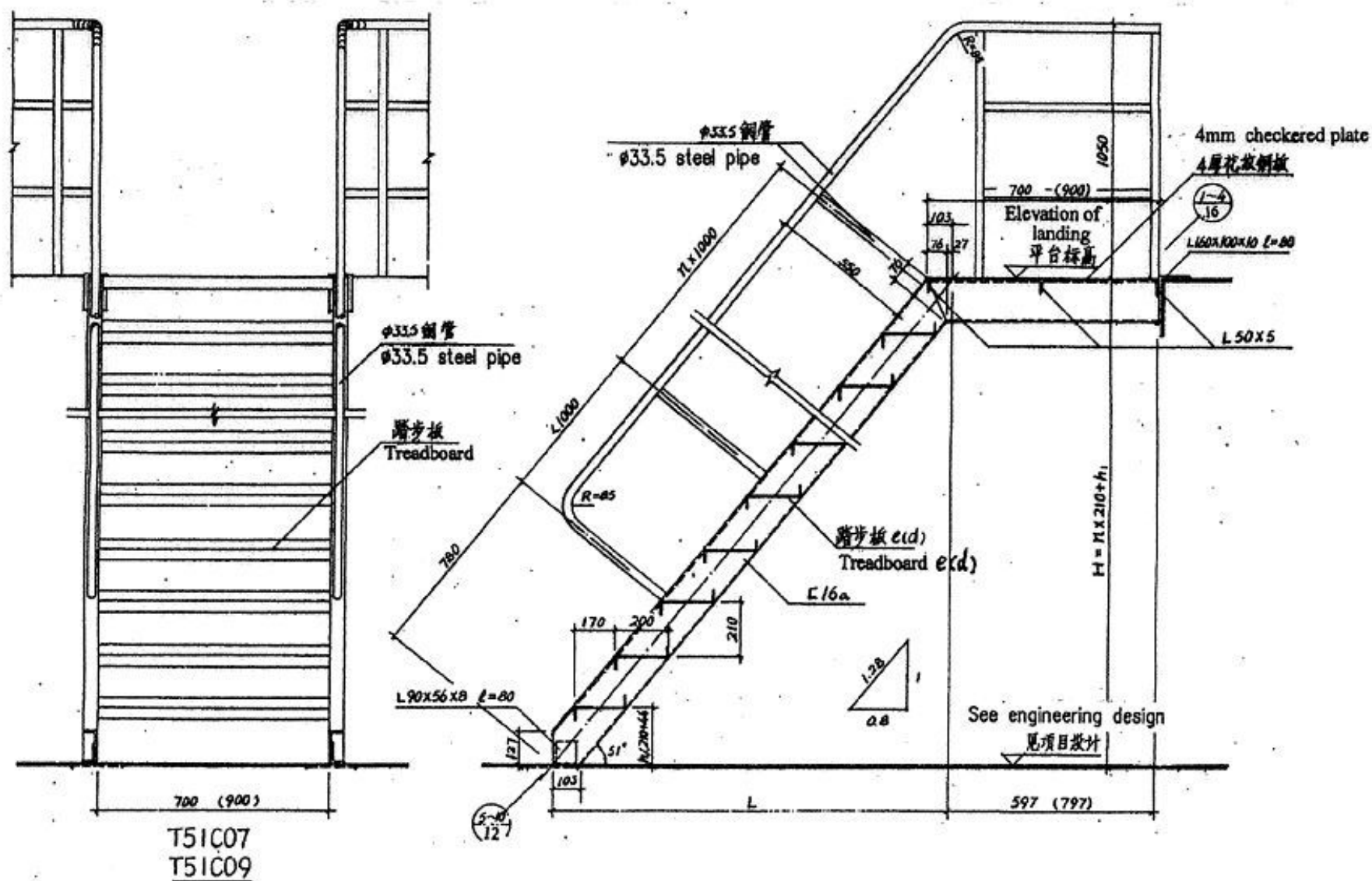


注1: []内尺寸用于T59B; ()内尺寸用于T51B 注2: T59B为L160x100x10
 Note1: The dimension in '[]' is used for T59B; the dimension in '()' be used for T59B Note 2: If it's 'T59B', then it's L160x100x10.

T59B T51B T45B 详图
 T59B T51B T45B Detail

图索号 Atlas Number	STT10
页 Page	12



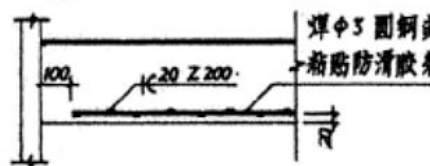


注:一. ()内数字用于T51C09; 二. 如 $h_1 < 127$ 时, 梯梁切角高度改小为 h_1 的尺寸。
 Notel: 1. The dimension in bracket is used for T51C09; 2. If h_1 is less than 127mm, then the corner cut height under the stringer should be equal to h_1 .

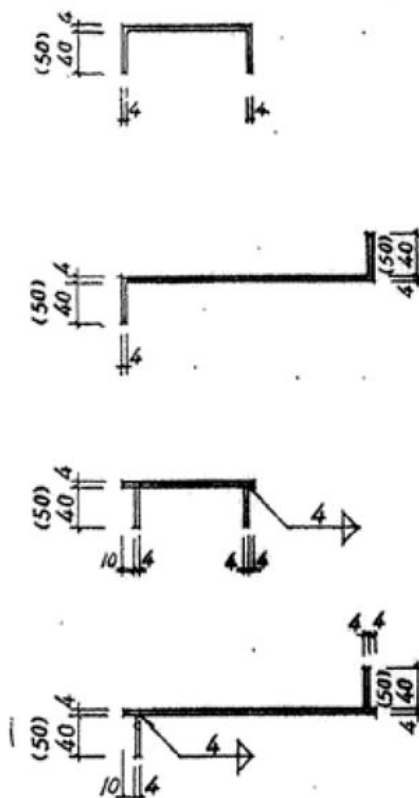
T51C07 T51C09 立面剖面图
 T51C07 T51C09
 Elevation & Sectional

图集号 Atlas Number	STT10
页 Page	14

踏步板 TREAD			
型号 TYPES	板长 LENGTH	压弯型 PRESS BENT TYPES	焊接型 WELDED TYPES
a	1100		
b	900		
c	700		
d	900		
e	700		
f	700		
g	1100		
h	900		
j	700		
l	900		
m	700		



平板防滑条图
Plate Non-slip batten plan

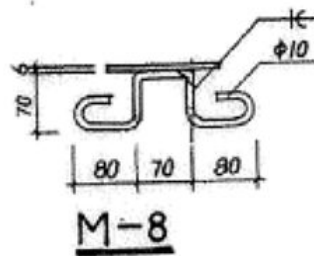
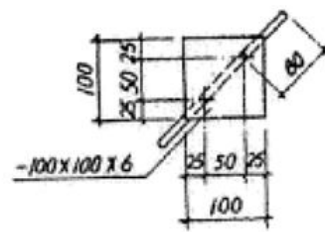
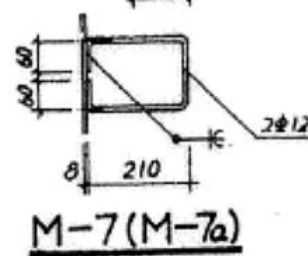
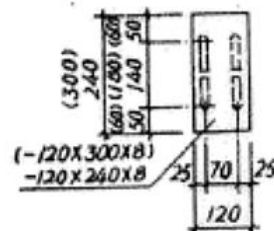
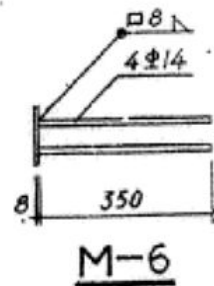
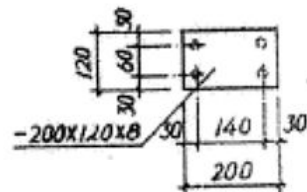
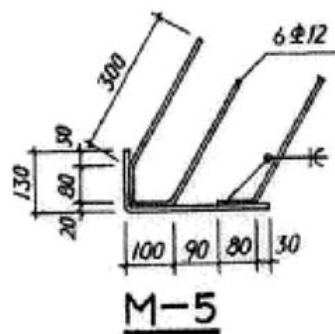
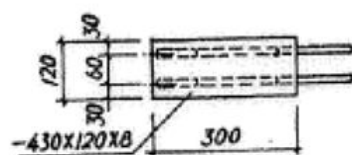
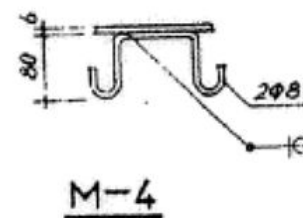
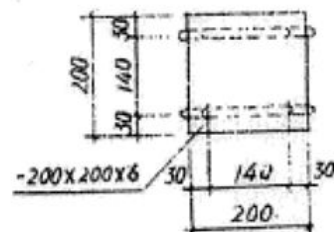
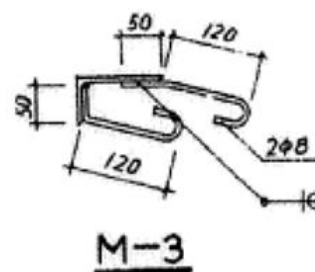
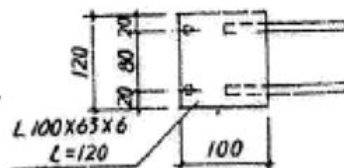
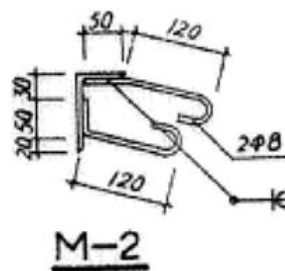
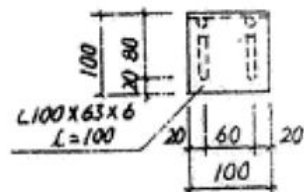
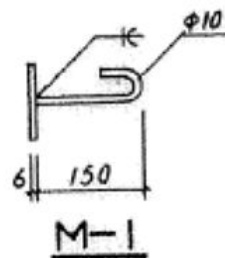
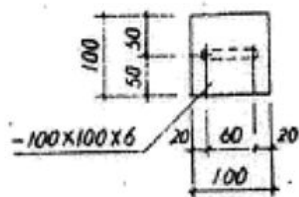


踏步板 TREAD					
型号 TYPES	规格 SPECIFICATION	长度 LENGTH (mm)	数量 QTY.	重量 WGT. (kg)	
压弯型 PRESS BENT TYPES	a	-330x4	1100	1	12.49
	b	-310x4	900	1	9.60
	c	-310x4	700	1	7.47
	d	-280x4	900	1	8.67
	e	-280x4	700	1	6.74
	f	-250x4	700	1	6.02
	g	-210x4	1100	1	7.95
	h	-190x4	900	1	5.88
	j	-190x4	700	1	4.58
	l	-170x4	900	1	5.26
	m	-170x4	700	1	4.09
焊接型 WELDED TYPES	a	-50x4	1100	2	3.45
		-250x4		1	9.46
	b	-40x4	900	2	2.27
		-250x4		1	7.74
	c	-40x4	700	2	1.76
		-250x4		1	6.02
	d	-40x4	900	2	2.27
		-210x4		1	6.50
	e	-40x4	700	2	1.76
		-210x4		1	5.06
	f	-40x4	700	2	1.76
		-180x4		1	4.34
	g	-50x4	1100	2	3.45
		-110x4		1	4.16
	h	-40x4	900	2	2.27
		-110x4		1	3.41
	j	-40x4	700	2	1.76
		-110x4		1	2.65
	l	-40x4	900	2	2.27
		-90x4		1	2.77
	m	-40x4	700	2	1.76
		-90x4		1	2.17

- 一. 材料重量除焊接型的-40x4(1.26千克/米)及-50x4(1.57千克/米)外,其余均按扁豆型花纹钢板(34.4千克/米)计算。
二. 括号内数字用于踏步板a。
三. 用普通钢板作踏步时应加防滑条。
1. The weight of material calculated by the lug-patterned steel plate (34.4kg/m), except the welded type -40x4(1.26kg/m)&-50x4(1.57kg/m)
2. The dimension in bracket should be used as tread a.
3. When it's common steel plate, the tread should have non-slip additionally.

斜梯踏步板详图及材料表
Stair tread Detail
& Material list

图集号
Atlas Number
STT10
页 Page
17

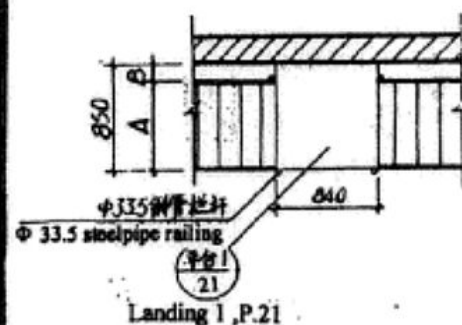


注：“Φ”为Ⅱ级钢筋。

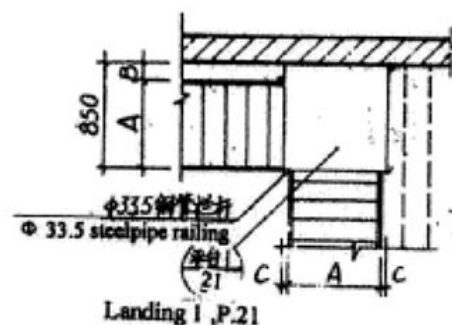
Note: The sign “Φ” expressed 2nd class reinforced bar.

予埋件详图
Pre-cast element Detail

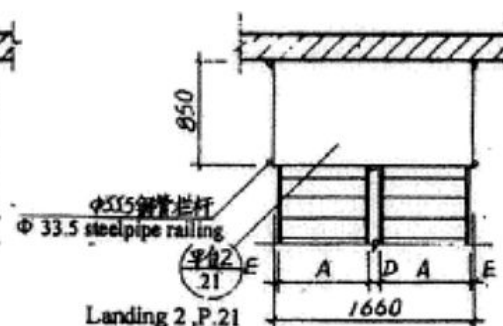
图集号 Atlas Number	STT10
页 Page	18



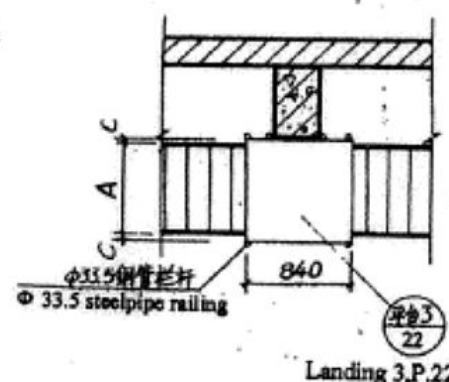
① 靠墙直跑梯间平台
Straightway ladder platform by the wall



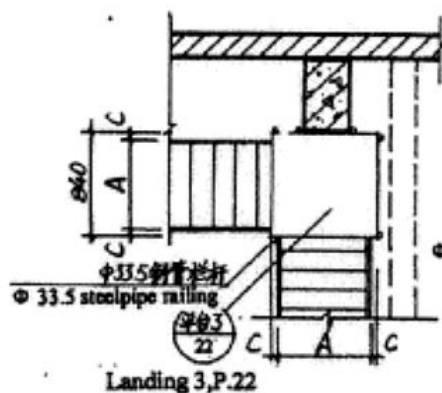
② 靠墙转角梯间平台
Corner ladder platform by the wall



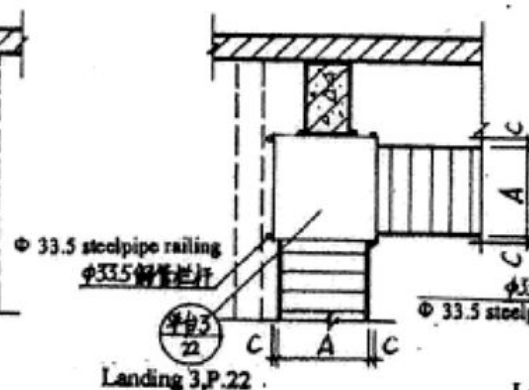
③ 靠墙双跑梯间平台
Dog-legged ladder platform by the wall



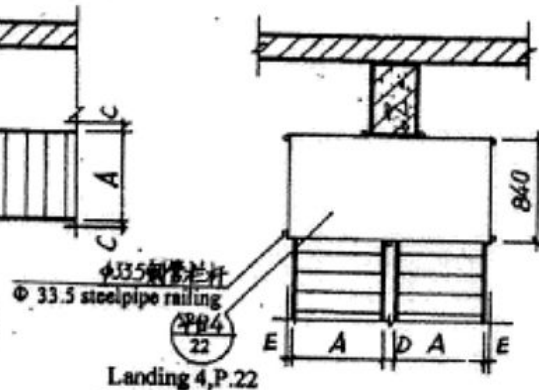
④ 靠柱直跑梯间平台
Straightway ladder platform by the column



⑤ 靠柱转角梯间平台
Corner ladder platform by the column



⑥ 靠柱转角梯间平台
Corner ladder platform by the column

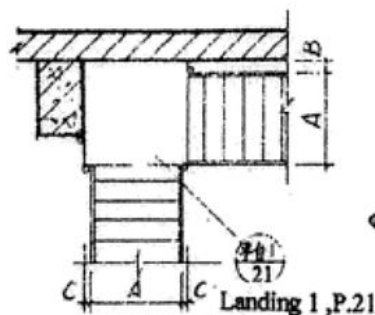


⑦ 靠柱双跑梯间平台
Dog-legged ladder platform by the column

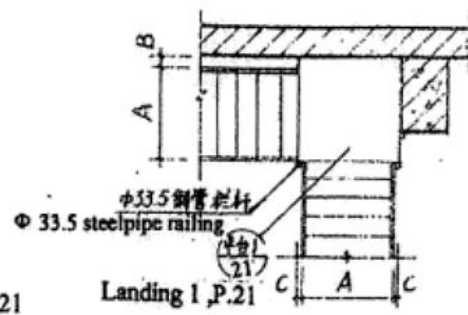
钢梯型号 Types of stair	A	B	C	D	E
T59B07	826	24	7	8	0
T51B07	826	24	7	8	0
T45B07	826	24	7	8	0

斜梯间平台类型图(一)
Diagonal ladder platform
Types plan(1)

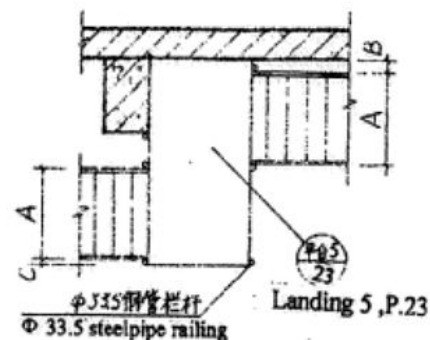
图集号
Atlas Number
STT10
页 Page
19



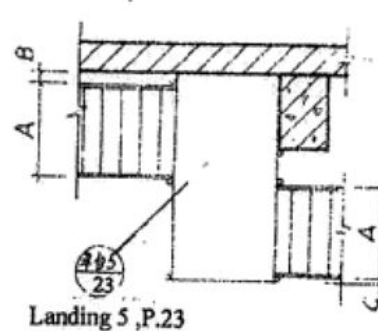
⑧ 靠柱靠墙转角梯间平台
Corner ladder platform
by the wall and column



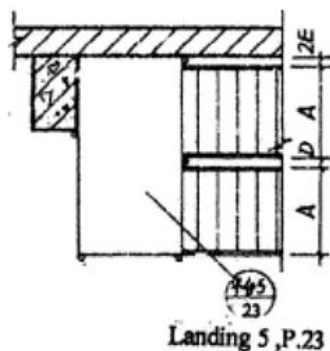
⑨ 靠柱靠墙转角梯间平台
Corner ladder platform
by the wall and column



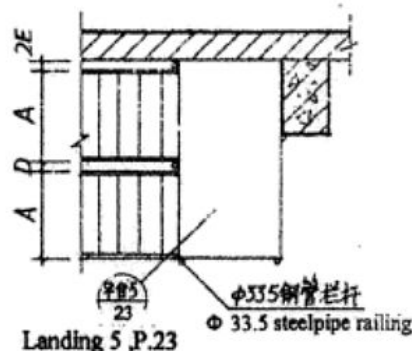
⑩ 靠柱靠墙转角
双跑梯间平台
Corner & Dog-legged
ladder platform by the
wall and column



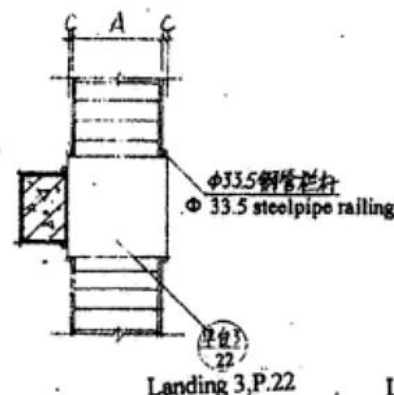
⑪ 靠柱靠墙转角
双跑梯间平台
Corner & Dog-legged
ladder platform by the
wall and column



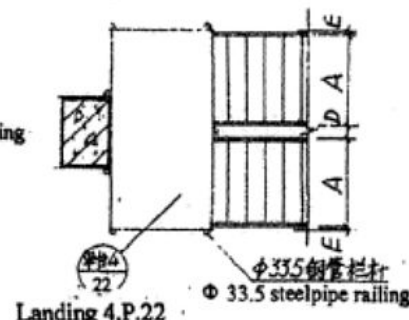
⑫ 靠柱靠墙双跑梯间平台
Dog-legged ladder platform
by the wall and column



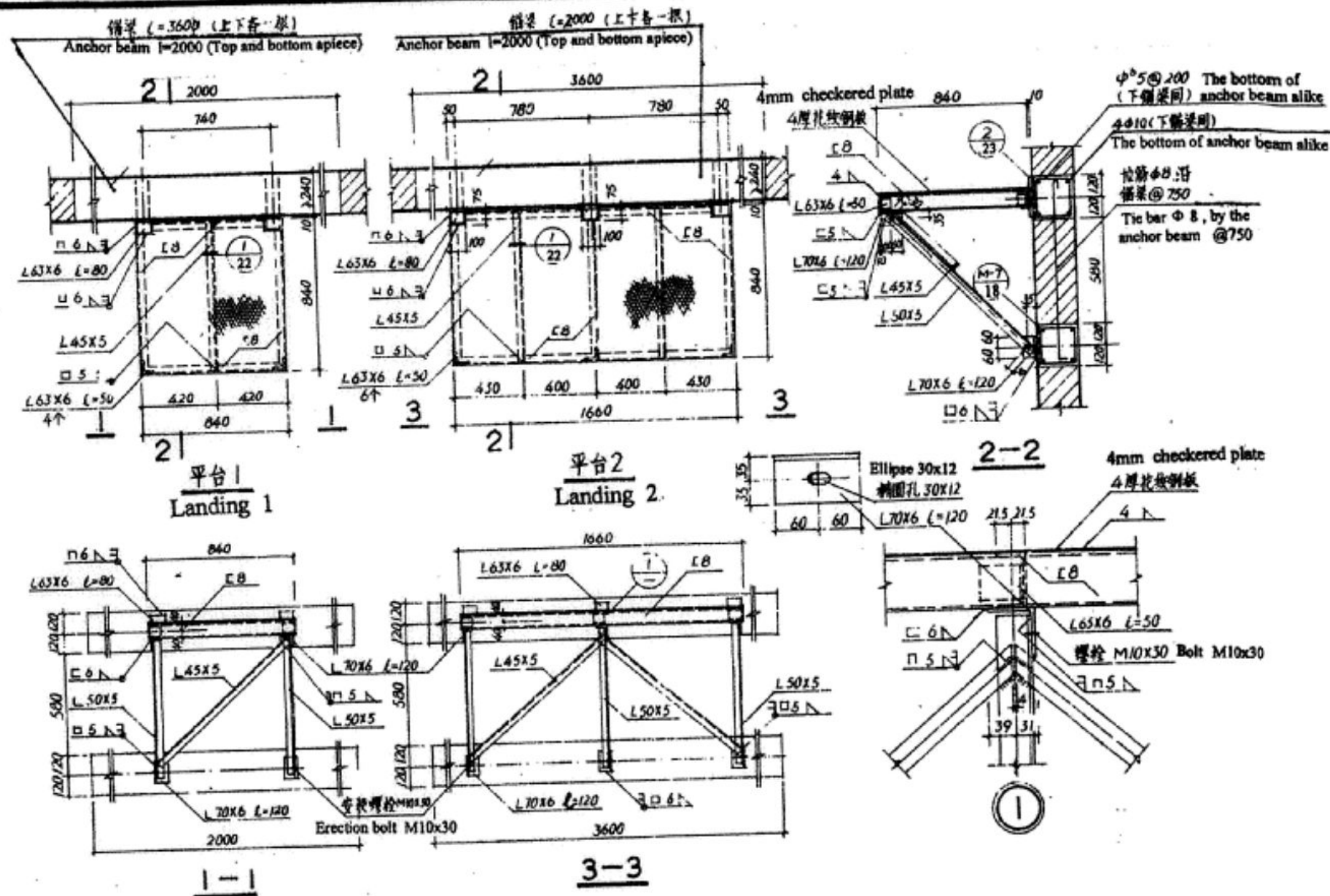
⑬ 靠柱靠墙双跑梯间平台
Dog-legged ladder platform
by the wall and column



⑭ 靠柱直跑梯间平台
Straightway ladder
platform by the column



⑮ 靠柱双跑梯间平台
Dog-legged ladder
platform by the column



注: 锚梁用C15混凝土现浇。

Note: The anchor beam pour-in-place by C15 concrete.

斜梯间平台详图(一)
Diagonal ladder
platform Detail(1)

图集号 Atlas Number	STT10
页 Page	21



T90A05 Material list

T59B07 Material list

钢梯代号	梯高 (毫米)	总重 (千克)	梯梁 STRINGER		踏步 TREAD		栏杆 HANDRAIL		连接件 (千克)	平台 (千克)	钢梯代号	梯高 (毫米)	总重 (千克)	梯梁 STRINGER		踏步 TREAD		栏杆 HANDRAIL		连接件 (千克)	平台 (千克)
			L75x50x5		φ20		φ33.5x3.25							[16a]		4mm厚花纹钢板 4mm CHECK- -ERED PLATE		φ33.5x3.25			
			长度 (毫米)	重量 (千克)	数量 (个)	重量 (千克)	长度 (毫米)	重量 (千克)						长度 (毫米)	重量 (千克)	数量 (个)	重量 (千克)	长度 (毫米)	重量 (千克)		
T90A05- 60	600	21.31	1200	5.77	2	2.37	4366	10.57			T59B07- 46	460	33.18	1073	18.49	2	10.11				
" - 90	900	25.38	1800	8.65	3	3.56	"	"			" - 69	690	48.45	1610	27.74	3	16.13				
" - 120	1200	29.45	2400	11.54	4	4.74	"	"			" - 92	920	75.76	2147	36.99	4	22.15	4975	12.04		
" - 150	1500	33.52	3000	14.42	5	5.93	"	"			" - 115	1150	94.29	2683	46.23	5	28.17	6325	15.31		
" - 180	1800	37.59	3600	17.31	6	7.11	"	"			" - 138	1380	110.85	3220	55.48	6	34.19	6861	16.60		
" - 210	2100	41.66	4200	20.19	7	8.30	"	"			" - 161	1610	127.42	3757	64.73	7	40.21	7398	17.90		
" - 240	2400	45.74	4800	23.08	8	9.49	"	"			" - 184	1840	145.77	4293	73.79	8	46.23	8748	21.17		
" - 270	2700	49.80	5400	25.96	9	10.67	"	"			" - 207	2070	162.52	4830	83.22	9	52.25	9285	22.47		
" - 300	3000	53.88	6000	28.85	10	11.86	"	"			" - 230	2300	179.09	5367	92.47	10	58.27	9821	23.77		
" - 330	3300	57.94	6600	31.73	11	13.04	"	"			" - 253	2530	197.61	5903	101.71	11	64.29	11171	27.03		
" - 360	3600	62.02	7200	34.62	12	14.23	"	"			" - 276	2760	214.18	6440	110.96	12	70.31	11708	28.33		
" - 390	3900	66.08	7800	37.50	13	15.41	"	"			" - 299	2990	230.75	6977	120.21	13	76.33	12244	29.63		
" - 420	4200	70.16	8400	40.39	14	16.60	"	"			" - 322	3220	247.30	7513	129.45	14	82.34	12781	30.93		
" - 450	4500	74.22	9000	43.27	15	17.78	"	"			" - 345	3450	265.85	8050	138.70	15	88.37	14131	34.20		
											" - 368	3680	282.40	8586	147.94	16	94.39	14667	35.49		
											" - 391	3910	298.97	9123	157.19	17	100.41	15204	36.79		
											" - 414	4140	315.54	9660	166.44	18	106.43	15741	38.09		
											" - 437	4370	334.07	10196	175.68	19	112.45	17091	41.36		
											" - 460	4600	350.64	10733	184.93	20	118.47	17627	42.66		
											" - 483	4830	367.21	11270	194.18	21	124.49	18164	43.96		
											" - 500	5000	383.32	11666	201.01	22	130.51	19514	47.22		

T90A05 T59B07 材料表
T90A05 T59B07 Material list

Atlas Number

STT10

Page

24

T51B07 材料表
T51B07 Material list

钢梯代号 STEEL LADDER CODE NAME	梯高 (毫米) STAIR HEIGHT (mm)	总重 (千克) TOTAL WGT. (kg)	梯梁 STRINGER		踏步 TREAD		栏杆 HANDRAIL		连接件 (千克) ADAPTING PIECE (kg)	平台 (千克) PLATFORM (kg)
			[16a]		4厚花纹钢板 4mm CHECK- -ERED PLATE		φ33.5X3.25			
			长度 (毫米) LENGTH (mm)	重量 (千克) WGT. (kg)	数量 (个) QTY.	重量 (千克) WGT. (kg)	长度 (毫米) LENGTH (mm)	重量 (千克) WGT. (kg)		
T51B07-42	420	33.12	1081	18.62	2	10.83			重量 3.67 各两块 L140x90x8 L=80 L90x56x8 L=80 Two pieces both sides	
" - 63	630	61.49	1621	27.94	3	17.37	5088	12.31		
" - 84	840	81.35	2162	37.25	4	24.31	6662	16.12		
" - 105	1050	98.71	2702	46.56	5	31.05	7202	17.43		
" - 126	1260	116.07	3243	55.87	6	37.79	7743	18.74		
" - 147	1470	135.93	3783	65.18	7	44.53	9316	22.55		
" - 168	1680	153.28	4324	74.49	8	51.27	9857	23.85		
" - 189	1890	170.65	4864	83.81	9	58.01	10397	25.16		
" - 210	2100	188.01	5404	93.12	10	64.75	10938	26.47		
" - 231	2310	207.87	5945	102.43	11	71.49	12511	30.28		
" - 252	2520	225.22	6485	111.74	12	78.23	13051	31.58		
" - 273	2730	242.58	7026	121.05	13	84.97	13592	32.89		
" - 294	2940	259.95	7566	130.37	14	91.71	14132	34.20		
" - 315	3150	279.81	8107	139.68	15	98.45	15706	38.01		
" - 336	3360	297.17	8647	148.99	16	105.19	16246	39.32		
" - 357	3570	314.53	9188	158.30	17	111.93	16787	40.63		
" - 378	3780	334.38	9728	167.61	18	118.67	18360	44.43		
" - 399	3990	351.74	10268	176.92	19	125.41	18900	45.74		
" - 420	4200	369.11	10809	186.24	20	132.15	19441	47.05		
" - 441	4410	386.47	11349	195.55	21	138.89	19981	48.36		
" - 462	4620	406.05	11890	204.86	22	145.63	21555	52.16		
" - 483	4830	423.68	12430	214.17	23	152.37	22095	53.47		
" - 504	5040	441.04	12971	223.48	24	159.11	22636	54.78		

T51B09 材料表
T51B09 Material list

101B0B material list

钢梯代号 STEEL LADDER CODE NAME	梯高 (毫米) STAIR HEIGHT (mm)	总重 (千克) TOTAL WGT. (kg)	梯梁 STRINGER		踏步 TREAD		栏杆 HANDRAIL		连接件 (千克) ADAPTING PIECE (kg)	平台 (千克) (kg)
			[16a]		4mm 花纹钢板 4mm CHECK- -ERED PLATE		φ33.5X3.25			
			长度 (毫米) LENGTH (mm)	重量 (千克) WGT. (kg)	数量 (个) QTY.	重量 (千克) WGT. (kg)	长度 (毫米) LENGTH (mm)	重量 (千克) WGT. (kg)		
T51B09-42	420	36.22	1081	18.62	2	13.93			重量 3.67 各两块 L140x90x8 L=80 L90x56x8 L=80 Two pieces both sides	
" - 63	630	66.52	1621	27.94	3	22.60	5088	12.31		
" - 84	840	88.31	2162	37.25	4	31.27	6662	16.12		
" - 105	1050	107.60	2702	46.56	5	39.94	7202	17.43		
" - 126	1260	126.89	3243	55.87	6	48.61	7743	18.74		
" - 147	1470	148.68	3783	65.18	7	57.28	9316	22.55		
" - 168	1680	167.49	4324	74.49	8	65.95	9857	23.85		
" - 189	1890	187.26	4864	83.81	9	74.62	10397	25.16		
" - 210	2100	206.55	5404	93.12	10	83.29	10938	26.47		
" - 231	2310	228.34	5945	102.43	11	91.96	12511	30.28		
" - 252	2520	247.62	6485	111.74	12	100.63	13051	31.58		
" - 273	2730	266.91	7026	121.05	13	109.30	13592	32.89		
" - 294	2940	286.21	7566	130.37	14	117.97	14132	34.20		
" - 310	3100	308.00	8107	139.68	15	126.64	15706	38.01		
" - 336	3360	327.29	8647	148.99	16	135.31	16246	39.32		
" - 357	3570	346.58	9188	158.30	17	143.98	16787	40.63		
" - 378	3780	368.36	9728	167.61	18	152.65	18360	44.43		
" - 399	3990	387.65	10268	176.92	19	161.32	18900	45.74		
" - 420	4200	406.95	10809	186.24	20	169.99	19441	47.05		
" - 441	4410	426.24	11349	195.55	21	178.66	19981	48.36		
" - 462	4620	448.02	11890	204.86	22	187.33	21555	52.16		
" - 483	4830	467.31	12430	214.17	23	196.00	22095	53.47		
" - 504	5040	486.61	12971	223.49	24	204.67	22636	54.78		

T51B07 T51B09 材料表
T51B07 T51B09 Material list

图集号
Atlas Number

STT10

页 Page

25

T45B07 材料表
T45B07 Material list

钢梯代号 STEEL LADDER CODE NAME	梯高 (毫米) STAIR HEIGHT (mm)	总重 (千克) TOTAL WGT. (kg)	梯梁 STRINGER		踏步 TREAD		栏杆 HANDRAIL		连接件 (千克) ADAPTING PIECE (kg)	平台 (千克) PLATFORM (kg)
			[16a]		4厚花纹钢板 4mm CHECK- -ERED PLATE		ø33.5X3.25			
			长度 (毫米) LENGTH (mm)	重量 (千克) WGT. (kg)	数量 (个) QTY.	重量 (千克) WGT. (kg)	长度 (毫米) LENGTH (mm)	重量 (千克) WGT. (kg)		
T45B07- 60	600	69.10	1697	29.24	3	19.5	6888	16.67	重量 3.67 L140x90x8 L=80 L90x55x8 L=80 Two pieces both sides	
" - 80	800	87.69	2263	38.99	4	26.99	7453	18.04		
" - 100	1000	105.27	2828	48.73	5	33.46	8019	19.41		
" - 120	1200	124.86	3394	58.48	6	41.93	8585	20.78		
" - 140	1400	146.28	3960	68.23	7	49.40	10323	24.98		
" - 160	1600	164.86	4526	77.97	8	56.87	10889	26.35		
" - 180	1800	183.45	5091	87.72	9	64.34	11455	27.72		
" - 200	2000	204.88	5657	97.47	10	71.81	13194	31.93		
" - 220	2200	223.44	6223	107.21	11	79.26	13759	33.30		
" - 240	2400	242.05	6788	116.96	12	86.75	14325	34.67		
" - 260	2600	260.64	7354	126.71	13	94.22	14891	36.04		
" - 280	2800	282.06	7920	136.40	14	101.69	16629	40.24		
" - 300	3000	300.64	8485	146.20	15	109.16	17195	41.61		
" - 320	3200	319.23	9051	155.95	16	116.63	17761	42.98		
" - 340	3400	340.66	9617	165.70	17	124.10	19499	47.19		
" - 360	3600	359.24	10182	175.44	18	131.57	20065	48.56		
" - 380	3800	377.83	10748	185.19	19	139.04	20631	49.93		
" - 400	4000	396.41	11314	194.94	20	146.51	21196	51.29		
" - 420	4200	417.83	11879	204.68	21	153.98	22935	55.50		
" - 440	4400	436.42	12445	214.43	22	161.45	23501	56.87		
" - 460	4600	455.01	13011	224.18	23	168.92	24066	58.24		
" - 480	4800	476.43	13577	233.92	24	176.39	25805	62.45		
" - 500	5000	495.02	14142	243.67	25	183.86	26371	63.82		

T45B09 材料表
T45B09 Material list

钢梯代号 STEEL LADDER CODE NAME	梯高 (毫米) STAIR HEIGHT (mm)	总重 (千克) TOTAL WGT. (kg)	梯梁 STRINGER		踏步 TREAD		栏杆 HANDRAIL		连接件 (千克) ADAPTING PIECE (kg)	平台 (千克) (kg)
			[16a]		4厚花纹钢板 4mm CHECK- -ERED PLATE		ø33.5X3.25			
			长度 (毫米) LENGTH (mm)	重量 (千克) WGT. (kg)	数量 (个) QTY.	重量 (千克) WGT. (kg)	长度 (毫米) LENGTH (mm)	重量 (千克) WGT. (kg)		
T45B09- 60	600	74.66	1697	29.24	3	25.08	6888	16.67	重量 3.67 L140x90x8 L=80 L90x55x8 L=80 Two pieces both sides	
" - 80	800	95.38	2263	38.99	4	34.68	7453	18.04		
" - 100	1000	116.09	2828	48.73	5	44.28	8019	19.41		
" - 120	1200	136.81	3394	58.48	6	53.88	8585	20.78		
" - 140	1400	160.36	3960	68.23	7	63.48	10323	24.98		
" - 160	1600	181.07	4526	77.97	8	73.08	10889	26.35		
" - 180	1800	201.79	5091	87.72	9	82.68	11455	27.72		
" - 200	2000	225.35	5657	97.47	10	92.28	13194	31.93		
" - 220	2200	246.06	6223	107.21	11	101.88	13759	33.30		
" - 240	2400	266.78	6788	116.96	12	111.48	14325	34.67		
" - 260	2600	287.50	7354	126.71	13	121.08	14891	36.04		
" - 280	2800	311.05	7920	136.46	14	130.68	16629	40.24		
" - 300	3000	331.76	8485	146.20	15	140.28	17195	41.61		
" - 320	3200	352.48	9051	155.95	16	149.88	17761	42.98		
" - 340	3400	376.04	9617	165.70	17	159.48	19499	47.19		
" - 360	3600	396.75	10182	175.44	18	169.08	20065	48.56		
" - 380	3800	417.47	10748	185.19	19	178.68	20631	49.93		
" - 400	4000	438.14	11314	194.94	20	188.28	21177	51.25		
" - 420	4200	461.73	11879	204.68	21	197.88	22935	55.50		
" - 440	4400	482.45	12445	214.43	22	207.48	23501	56.87		
" - 460	4600	503.17	13011	224.18	23	217.08	24066	58.24		
" - 480	4800	526.72	13577	233.92	24	226.68	25805	62.45		
" - 500	5000	547.44	14142	243.67	25	236.28	26371	63.82		

T45B07 T45B09 材料表
T45B07 T45B09 Material list

T45B11 材料表
T45B11 Material list

钢梯代号 STEEL LADDER CODE NAME	梯高 (毫米) STAIR HEIGHT (mm)	总重 (千克) TOTAL WGT. (kg)	梯梁 STRINGER		踏步 TREAD		栏杆 HANDRAIL		连接件 (千克) ADAPTING PIECE (kg)	平台 (千克) PLATFORM (kg)
			[16a]		4厚花纹钢板 4mm CHECK- -ERED PLATE		ø33.5X3.25			
			长度 (毫米) LENGTH (mm)	重量 (千克) WGT. (kg)	数量 (个) QTY.	重量 (千克) WGT. (kg)	长度 (毫米) LENGTH (mm)	重量 (千克) WGT. (kg)		
T45B11- 60	600	92.10	1697	33.50	3	32.93	9089	22.00	重量 3.67 WGT. 3.67 L140x90x8 L=80 各两块 L90x56x8 L=80 Two pieces both sides	
" - 80	800	121.83	2263	44.67	4	45.42	11597	28.07		
" - 100	1000	149.35	2828	55.83	5	57.91	13200	31.94		
" - 120	1200	179.09	3394	67.00	6	70.40	15709	38.02		
" - 140	1400	206.62	3960	78.17	7	82.89	17311	41.89		
" - 160	1600	236.34	4526	89.33	8	95.38	19820	47.96		
" - 180	1800	263.88	5091	100.50	9	107.87	21422	51.84		
" - 200	2000	293.61	5657	111.67	10	120.36	23931	57.91		
" - 220	2200	321.14	6223	122.83	11	132.85	25533	61.79		
" - 240	2400	350.87	6788	134.00	12	145.34	28042	67.86		
" - 260	2600	378.41	7354	145.17	13	157.83	29644	71.74		
" - 280	2800	408.13	7920	156.33	14	170.32	32153	77.81		
" - 300	3000	435.67	8485	167.50	15	182.81	33755	81.69		
" - 320	3200	465.40	9051	178.67	16	195.30	36264	87.76		
" - 340	3400	493.03	9617	189.93	17	207.79	37866	91.64		
" - 360	3600	522.66	10182	201.00	18	220.28	40375	97.71		
" - 380	3800	550.19	10748	212.17	19	232.77	41977	101.58		
" - 400	4000	579.92	11314	223.33	20	245.26	44486	107.66		
" - 420	4200	607.45	11879	234.50	21	257.75	46088	111.53		
" - 440	4400	637.19	12445	245.67	22	270.24	48597	117.61		
" - 460	4600	664.71	13011	256.83	23	282.73	50199	121.48		
" - 480	4800	694.44	13577	268.00	24	295.22	52708	127.55		
" - 500	5000	721.98	14142	279.17	25	307.71	54310	131.43		

T59C07 材料表
T59C07 Material list

钢梯代号 STEEL LADDER CODE NAME	梯高 (毫米) STAIR HEIGHT (mm)	总重 (千克) TOTAL WGT. (kg)	梯梁 STRINGER		踏步 TREAD		栏杆 HANDRAIL		连接件 (千克) ADAPTING PIECE (kg)	平台 (千克) (kg)
			[16a]		4厚花纹钢板 4mm CHECK- -ERED PLATE		ø33.5X3.25			
			长度 (毫米) LENGTH (mm)	重量 (千克) WGT. (kg)	数量 (个) QTY.	重量 (千克) WGT. (kg)	长度 (毫米) LENGTH (mm)	重量 (千克) WGT. (kg)		
T59C07-46	460	94.65	2473	42.61	1	6.02	7061	17.09	重量 4.58 WGT. 4.58 L160x100x10 L=80 各两块 L90x56x8 L=80 TWO pieces both sides L50x50x5 L=700x3=2100 4厚花纹钢板 4mm CHECKERED PLATE 0.504	重量 7.92 WGT. 7.92 重量 17.34 WGT. 17.34
" - 69	690	109.92	3010	51.84	2	12.04	7061	17.09		
" - 92	920	132.14	3547	61.10	3	18.06	9936	24.03		
" - 115	1150	150.67	4083	70.35	4	24.08	11286	27.31		
" - 138	1380	167.23	4620	79.59	5	30.10	11822	28.61		
" - 161	1610	183.79	5157	88.83	6	36.12	12359	29.91		
" - 184	1840	202.33	5693	98.08	7	42.14	13709	33.18		
" - 207	2070	218.89	6230	107.32	8	48.16	14246	34.48		
" - 230	2300	235.45	6767	116.57	9	54.18	14782	35.77		
" - 253	2530	253.98	7303	125.81	10	60.20	16132	39.04		
" - 276	2760	270.55	7840	135.06	11	66.22	16669	40.34		
" - 299	2990	287.11	8377	144.30	12	72.24	17205	41.64		
" - 322	3220	303.68	8913	153.55	13	78.26	17742	42.94		
" - 345	3450	322.20	9450	162.79	14	84.28	19092	46.20		
" - 368	3680	338.76	9986	172.03	15	90.30	19628	47.50		
" - 391	3910	355.33	10523	181.28	16	96.32	20165	48.80		
" - 414	4140	371.89	11060	190.52	17	102.34	20702	50.10		
" - 437	4370	390.42	11596	199.77	18	108.36	22052	53.37		
" - 460	4600	406.98	12133	209.01	19	114.38	22588	54.66		
" - 483	4830	423.55	12670	218.28	20	120.40	23125	55.96		
" - 500	5000	439.71	13066	225.13	21	126.42	24474	59.23		

T45B11 T59C07 材料表
T45B11 T59C07 Material list

T51C07 材料表
T51C07 Material list

钢梯代号 STEEL LADDER CODE NAME	梯高 (毫米) STAIR HEIGHT (mm)	总重 (千克) TOTAL WGT. (kg)	梯梁 STRINGER		踏步 TREAD		栏杆 HANDRAIL		连接件 (千克) ADAPTING PIECE (kg)	平台 (千克) PLATFORM (kg)
			[16a]		4厚花纹钢板 4mm CHECK- -ERED PLATE		ø33.5X3.25			
			长度 (毫米) LENGTH (mm)	重量 (千克) WGT. (kg)	数量 (个) QTY.	重量 (千克) WGT. (kg)	长度 (毫米) LENGTH (mm)	重量 (千克) WGT. (kg)		
T51C07- 42	420	96.27	2481	42.75	1	6.74	7000	16.94	重量 4.58 WGT. 4.58 L160x100x10 各两块 L90x58x8 各两块 L50x50x5 各三块 4mm CHECKERED PLATED 504	重量 7.92 WGT. 7.92 重量 17.34 WGT. 17.34
" - 63	630	119.55	3021	52.06	2	13.48	9988	24.17		
" - 84	840	139.41	3562	61.37	3	20.22	11562	27.98		
" -105	1050	156.77	4102	70.68	4	26.96	12102	29.29		
" -126	1260	174.13	4643	79.99	5	33.70	12643	30.60		
" -147	1470	193.99	5183	89.31	6	40.44	14216	34.40		
" -168	1680	211.35	5724	98.62	7	47.18	14757	35.71		
" -189	1890	228.71	6264	107.93	8	53.92	15297	37.02		
" -210	2100	246.07	6804	117.24	9	60.66	15838	38.33		
" -231	2310	265.93	7345	126.55	10	67.40	17411	42.14		
" -252	2520	283.28	7885	135.86	11	74.14	17951	43.44		
" -273	2730	300.65	8426	145.18	12	80.88	18492	44.75		
" -294	2940	318.01	8966	154.49	13	87.62	19032	46.06		
" -315	3150	337.93	9507	163.86	14	94.36	20606	49.87		
" -336	3360	355.22	10047	173.11	15	101.10	21146	51.17		
" -357	3570	372.59	10588	182.43	16	107.84	21687	52.48		
" -378	3780	392.44	11128	191.73	17	114.58	23260	56.29		
" -399	3990	409.81	11668	201.05	18	121.32	23800	57.60		
" -420	4200	427.17	12209	210.36	19	128.06	24341	58.91		
" -441	4410	443.31	12749	219.67	20	134.80	24881	60.21		
" -462	4620	464.38	13290	228.98	21	141.54	26455	64.02		
" -483	4830	481.74	13830	238.29	22	148.28	26995	65.33		
" -500	5000	499.11	14371	247.61	23	155.02	27536	66.64		

T51C09 材料表
T51C09 Material list

钢梯代号 STEEL LADDER CODE NAME	梯高 (毫米) STAIR HEIGHT (mm)	总重 (千克) TOTAL WGT. (kg)	梯梁 STRINGER		踏步 TREAD		栏杆 HANDRAIL		连接件 (千克) ADAPTING PIECE (kg)	平台 (千克) (kg)
			[16a]		4厚花纹钢板 4mm CHECK- -ERED PLATE		ø33.5X3.25			
			长度 (毫米) LENGTH (mm)	重量 (千克) WGT. (kg)	数量 (个) QTY.	重量 (千克) WGT. (kg)	长度 (毫米) LENGTH (mm)	重量 (千克) WGT. (kg)		
T51C09- 42	420	121.40	2881	49.64	1	8.67	8200	19.85	重量 4.58 WGT. 4.58 各两块 L160x100x10 L90x58x8 L50x50x5 TWO pieces both sides I=80 I=900x3=2700 4mm CHECKERED PLATE 0.828 4 厚花纹钢板	重量 10.18 WGT. 10.18 重量 28.48 WGT. 28.48
" - 63	630	146.61	3421	58.95	2	17.34	11188	27.08		
" - 84	840	168.39	3962	68.26	3	26.01	12762	30.88		
" -105	1050	187.68	4502	77.57	4	34.68	13302	32.19		
" -126	1260	206.97	5043	86.88	5	43.35	13843	33.50		
" -147	1470	228.77	5583	96.20	6	52.02	15416	37.31		
" -168	1680	248.06	6124	105.51	7	60.69	15957	38.62		
" -189	1890	267.34	6664	114.82	8	69.36	16497	39.92		
" -210	2100	286.63	7204	124.13	9	78.03	17038	41.23		
" -231	2310	308.43	7745	133.45	10	86.70	18611	45.04		
" -252	2520	327.72	8285	142.76	11	95.37	19151	46.35		
" -273	2730	347.00	8826	152.08	12	104.04	19692	47.65		
" -294	2940	366.29	9366	161.38	13	112.71	20232	48.96		
" -315	3150	388.08	9907	170.69	14	121.38	21806	52.77		
" -336	3360	407.37	10447	180.00	15	130.05	22346	54.08		
" -357	3570	426.66	10988	189.31	16	138.72	22887	55.39		
" -378	3780	448.45	11526	198.63	17	147.39	24460	59.19		
" -399	3990	467.74	12068	207.94	18	156.06	25000	60.50		
" -420	4200	487.03	12609	217.25	19	164.73	25541	61.81		
" -441	4410	506.32	13149	226.56	20	173.40	26081	63.12		
" -462	4620	528.11	14690	235.87	21	182.07	27655	66.93		
" -483	4830	547.40	14230	245.19	22	190.74	28195	68.23		
" -500	5000	566.69	14771	254.50	23	199.41	28736	69.54		

T51C07 T51C09 材料表
T51C07 T51C09 Material list

图集号
Atlas Number

ST110

页 Page

28

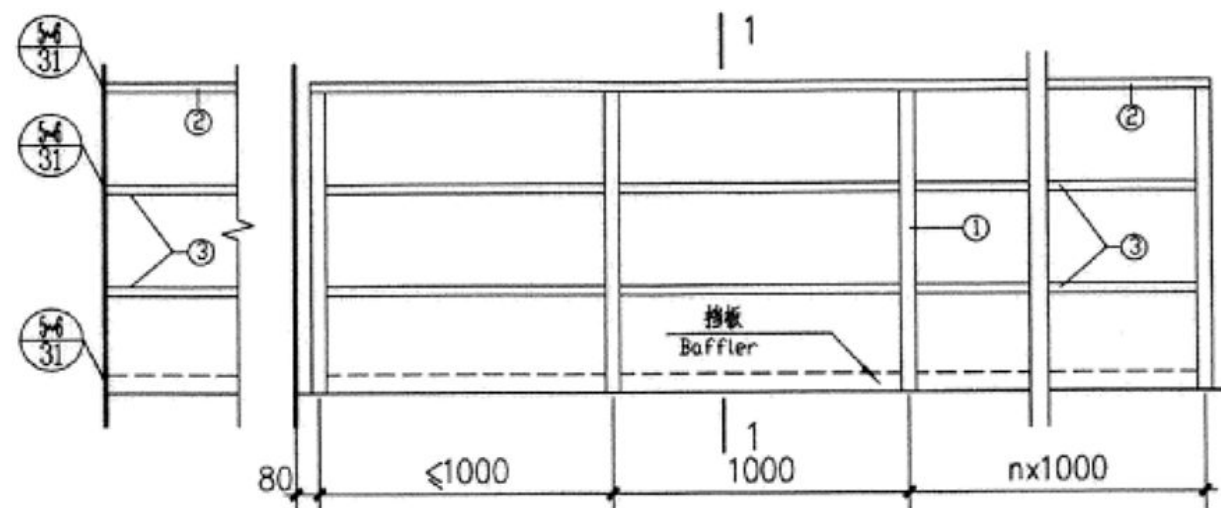
T45C07 材料表
T45C07 Material list

T45C09 材料表
T45C09 Material list

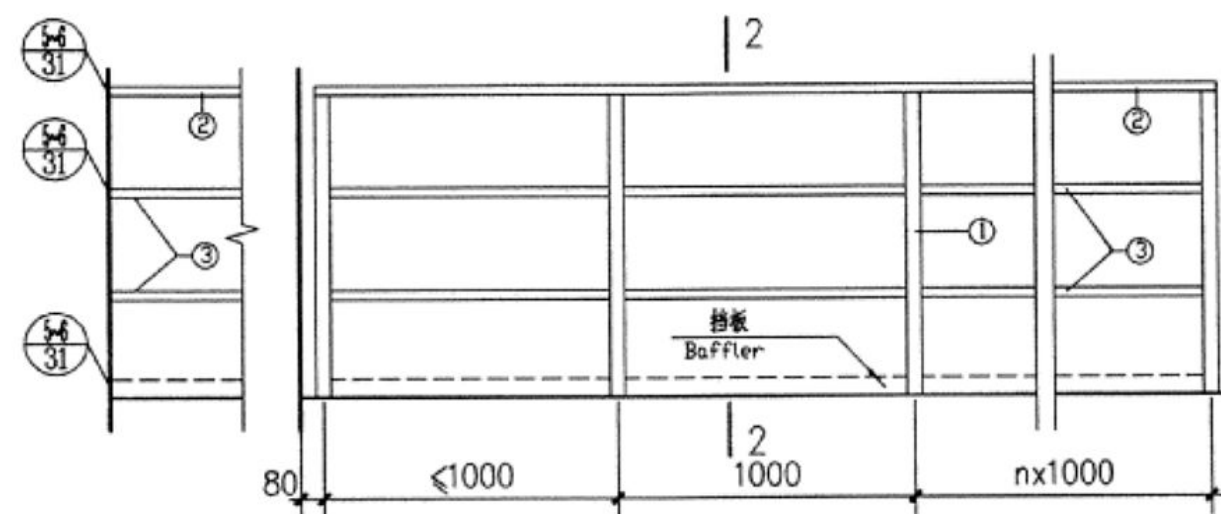
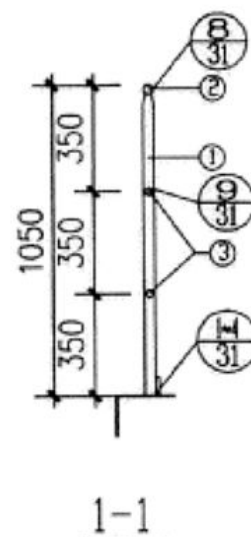
钢梯代号 STEEL LADDER CODE NAME	梯高 (毫米) STAIR HEIGHT (mm)	总重 (千克) TOTAL WGT. (kg)	梯梁 STRINGER		踏步 TREAD		栏杆 HANDRAIL		连接件 (千克) ADAPTING PIECE (kg)	平台 (千克) PLATFORM (kg)
			[16a]		4厚花纹钢板 4mm CHECK- -ERED PLATE		φ33.5X3.25			
			长度 (毫米) LENGTH (mm)	重量 (千克) WGT. (kg)	数量 (个) QTY.	重量 (千克) WGT. (kg)	长度 (毫米) LENGTH (mm)	重量 (千克) WGT. (kg)		
T45C07-60	600	126.52	3097	53.36	2	14.94	11729	28.38	重量 4.58 WGT. 4.58 L160x100x10 L90x56x8 I=80 } 各两块 I=80 } TWO pieces both sides	重量 7.92 WGT. 7.92 L50x50x5 I=700x3=2100 4厚花纹钢板 4mm CHECKERED PLATE 0.504
" - 80	800	145.11	3663	63.11	3	22.41	12294	29.75		
" - 100	1000	163.70	4228	72.86	4	29.80	12860	31.12		
" - 120	1200	182.28	4794	82.60	5	37.35	13426	32.49		
" - 140	1400	203.71	5360	92.35	6	44.82	15164	36.70		
" - 160	1600	222.30	5926	102.10	7	52.29	15730	38.07		
" - 180	1800	240.88	6491	111.84	8	59.76	1629	39.44		
" - 200	2000	262.30	7057	121.59	9	67.23	18035	43.64		
" - 220	2200	280.89	7623	131.34	10	74.70	18600	45.01		
" - 240	2400	299.47	8188	141.08	11	82.17	19166	46.38		
" - 260	2600	318.06	8754	150.83	12	89.64	19732	47.75		
" - 280	2800	339.49	9320	160.58	13	97.11	21470	51.96		
" - 300	3000	358.07	9885	170.32	14	104.58	22036	53.33		
" - 320	3200	376.66	10451	180.07	15	112.05	22602	54.70		
" - 340	3400	398.08	11017	189.82	16	119.52	24340	58.90		
" - 360	3600	416.66	11582	199.56	17	126.99	24906	60.27		
" - 380	3800	435.25	12148	209.31	18	134.46	25472	61.64		
" - 400	4000	453.84	12714	219.06	19	141.93	26037	63.01		
" - 420	4200	475.26	13279	228.80	20	149.40	27776	67.22		
" - 440	4400	493.85	13845	238.55	21	156.87	28342	68.59		
" - 460	4600	512.44	14411	248.30	22	164.34	28907	69.96		
" - 480	4800	533.85	14977	258.04	23	171.81	30646	74.16		
" - 500	5000	552.44	15542	267.79	24	179.28	31212	75.53		
钢梯代号 STEEL LADDER CODE NAME	梯高 (毫米) STAIR HEIGHT (mm)	总重 (千克) TOTAL WGT. (kg)	梯梁 STRINGER		踏步 TREAD		栏杆 HANDRAIL		连接件 (千克) ADAPTING PIECE (kg)	平台 (千克) PLATFORM (kg)
STEEL LADDER CODE NAME	STAIR HEIGHT (mm)	TOTAL WGT. (kg)	[16a]		4厚花纹钢板 4mm CHECK- -ERED PLATE		φ33.5X3.25		ADAPTING PIECE (kg)	(kg)
			长度 (毫米) LENGTH (mm)	重量 (千克) WGT. (kg)	数量 (个) QTY.	重量 (千克) WGT. (kg)	长度 (毫米) LENGTH (mm)	重量 (千克) WGT. (kg)		
			T45C09-60	600	153.98	3497	60.25	2		
" - 80	800	174.70	4063	70.00	3	26.80	13494	32.66		
" - 100	1000	195.42	4628	79.75	4	38.40	14060	34.03		
" - 120	1200	216.14	5194	89.50	5	48.00	14626	35.40		
" - 140	1400	239.68	5760	99.24	6	57.60	16364	39.60		
" - 160	1600	260.40	6326	108.99	7	67.20	16930	40.97		
" - 180	1800	281.12	6891	118.74	8	76.80	17496	42.34		
" - 200	2000	304.67	7457	128.48	9	86.40	19235	46.55		
" - 220	2200	325.39	8023	138.23	10	96.00	19800	47.92		
" - 240	2400	346.11	8588	147.98	11	105.60	20366	49.29		
" - 260	2600	366.82	9154	157.72	12	115.20	20932	50.66		
" - 280	2800	390.37	9720	167.47	13	124.80	22670	54.86		
" - 300	3000	411.09	10285	177.22	14	134.40	23236	56.23		
" - 320	3200	431.80	10851	186.96	15	144.00	23802	57.60		
" - 340	3400	455.36	11417	196.71	16	153.60	25540	61.81		
" - 360	3600	476.08	11982	206.46	17	163.20	26106	63.18		
" - 380	3800	496.79	12548	216.20	18	172.80	26672	64.55		
" - 400	4000	517.50	13114	225.95	19	182.40	27237	65.91		
" - 420	4200	541.06	13679	235.70	20	192.00	28976	70.12		
" - 440	4400	561.77	14245	245.44	21	201.60	29542	71.49		
" - 460	4600	582.49	14811	255.19	22	211.20	30107	72.86		
" - 480	4800	606.05	15377	264.94	23	220.80	31646	77.07		
" - 500	5000	626.76	15942	274.68	24	230.40	32412	78.44		

T45C07 T45C09 材料表
T51C07 T51C09 Material list

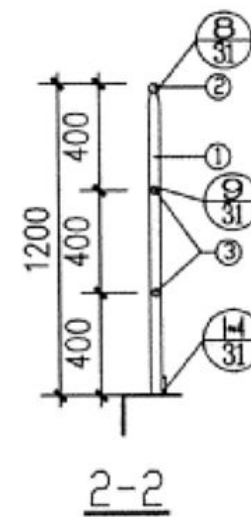
图集号
Atlas Number
STT10
页 Page
29



LG10A (LG10Aa) 立面图
LG10A (LG10Aa) ELEVATION



LG10B (LG10Ba) 立面图
LG10B (LG10Ba) ELEVATION



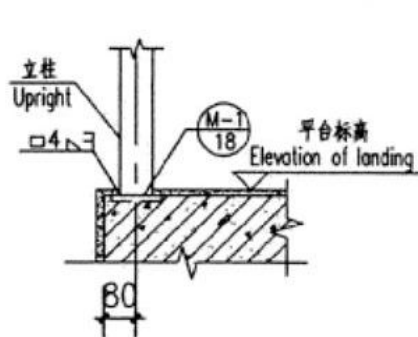
栏杆材料表 RAILING MATERIAL LIST

	LG10A	LG10B
编号 NO.	规格 SPECIFICATION	
①	Φ45x3	Φ60x3
②	Φ40x3	Φ40x3
③	Φ42x2.5	Φ42x2.5
每延米 栏杆重 TOTAL WGT. (kg/m)	9.86	10.97

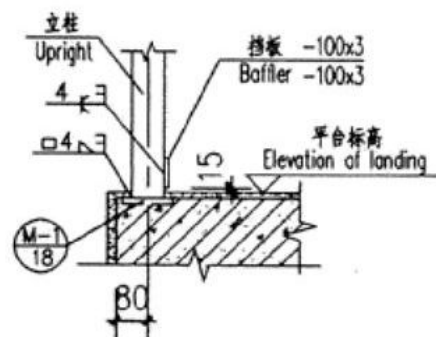
挡板用-100x3, 每延一米
重2.38千克
Baffle used -100x3, Weight
of railings one meter
prolonged 2.38kg.

LG10A(a) LG10B(a) 栏杆图
LG10A(a) LG10B(a) Railing plan

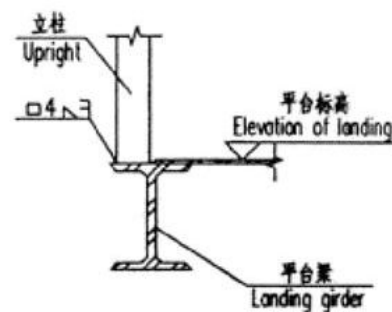
图集号 Atlas Number	STT10
页 Page	30



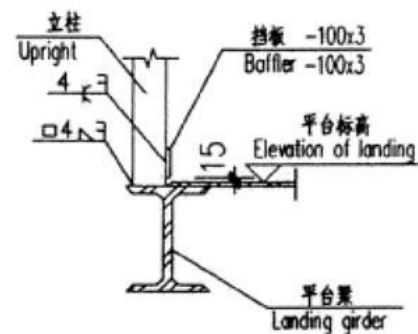
①



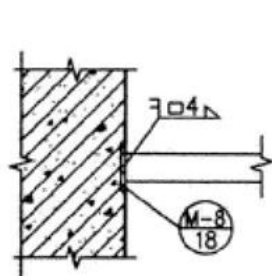
②



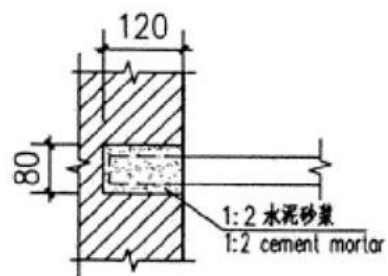
③



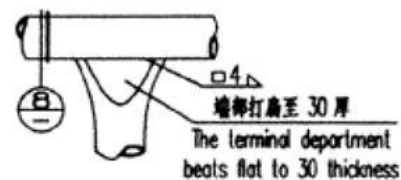
④



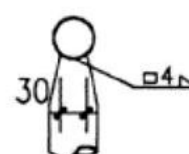
⑤



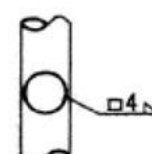
⑥



⑦



⑧



⑨

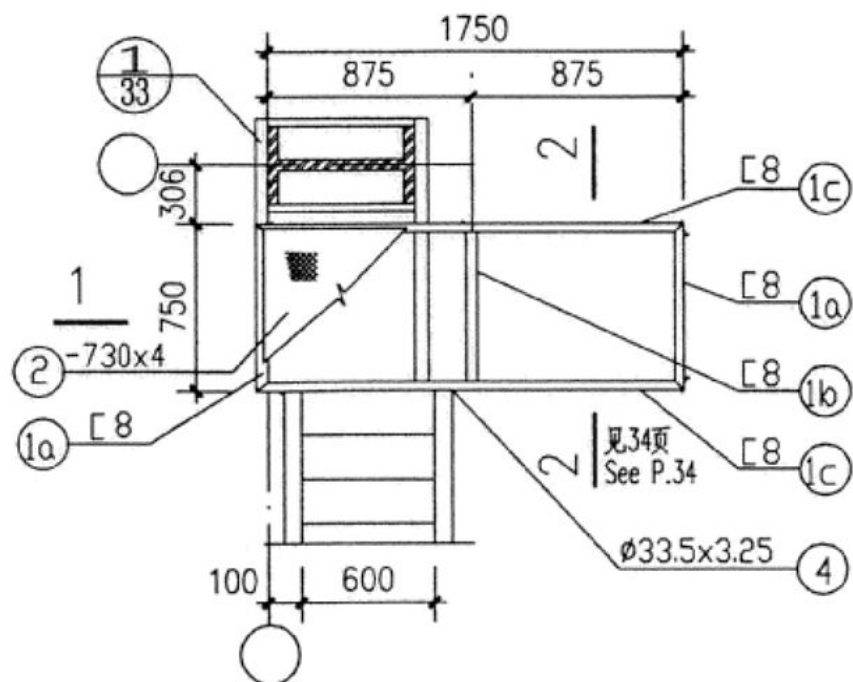
栏杆详图
Railing Detail

图集号
Atlas Number

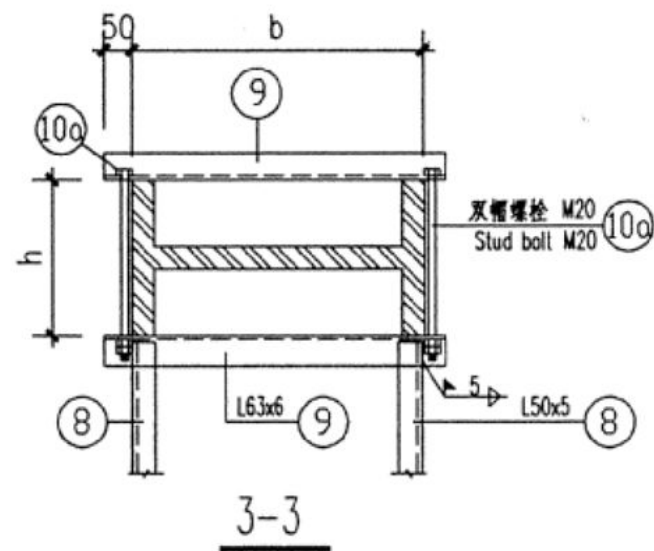
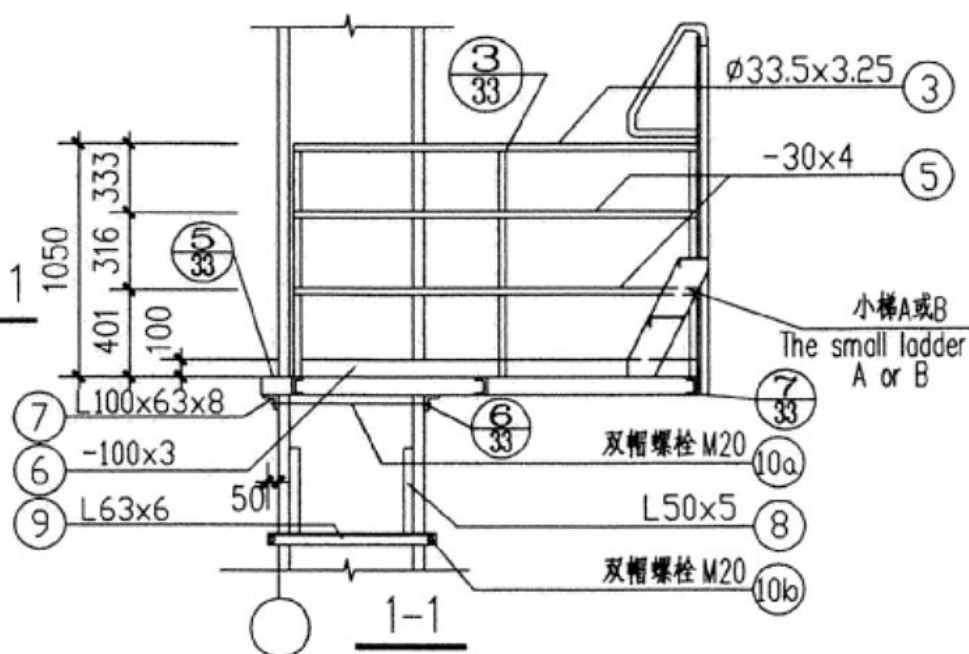
STT10

页 Page

31



DT平台平面图
The DT platform plan



注：柱尺寸b,h由项目设计确定。

Note: Staff gage inch b, h is from the item design certain.

DT吊车平台

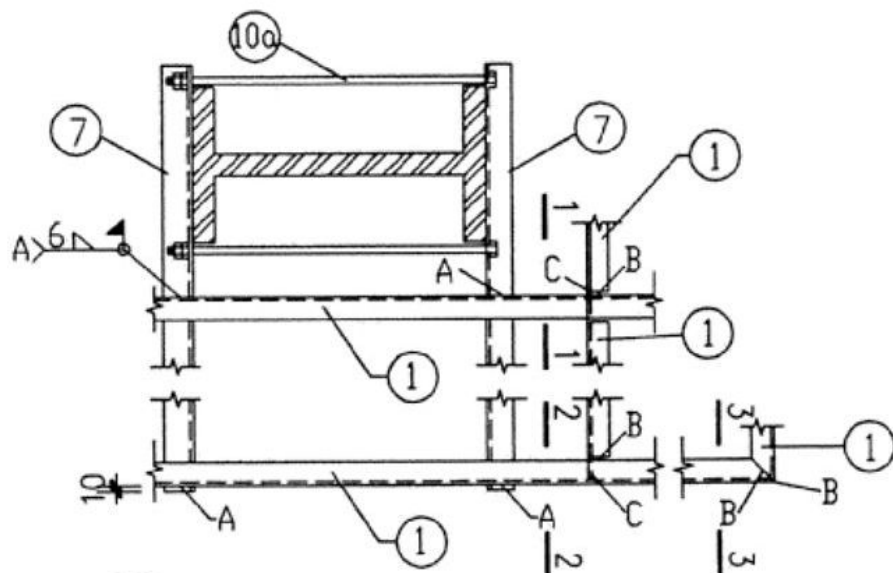
DT hoist bench

图集号
Atlas Number

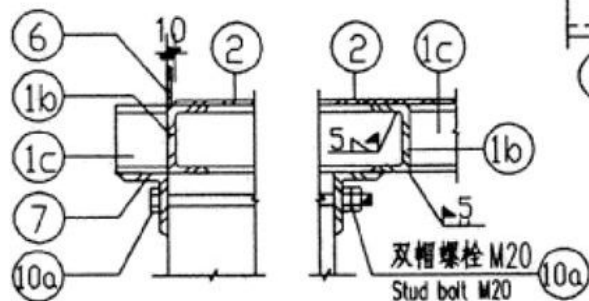
STT10

页 Page

32

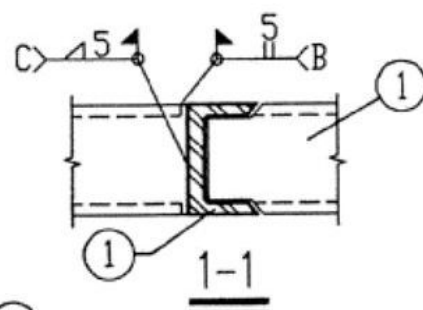


① 柱与平台支架详图
Stanchion and bench
standard detail drawing

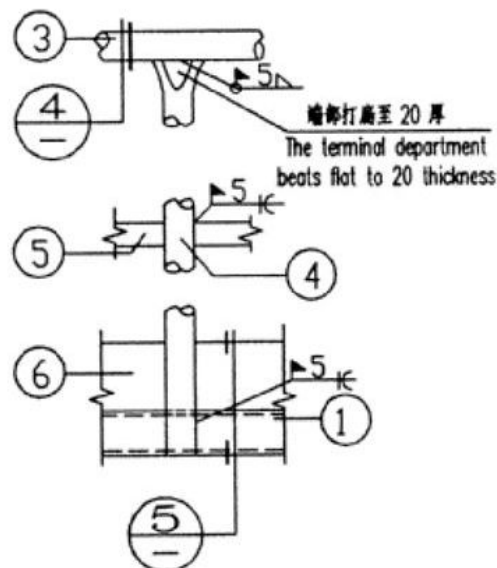


⑤

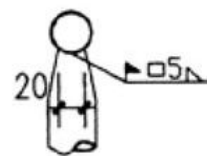
⑥



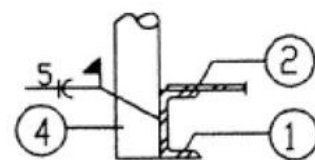
⑦



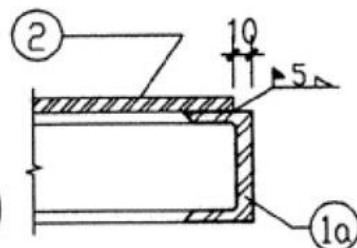
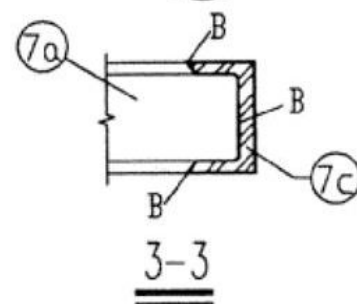
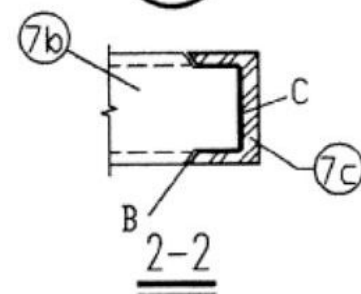
③



④



⑤



DT吊车平台详图 (一)

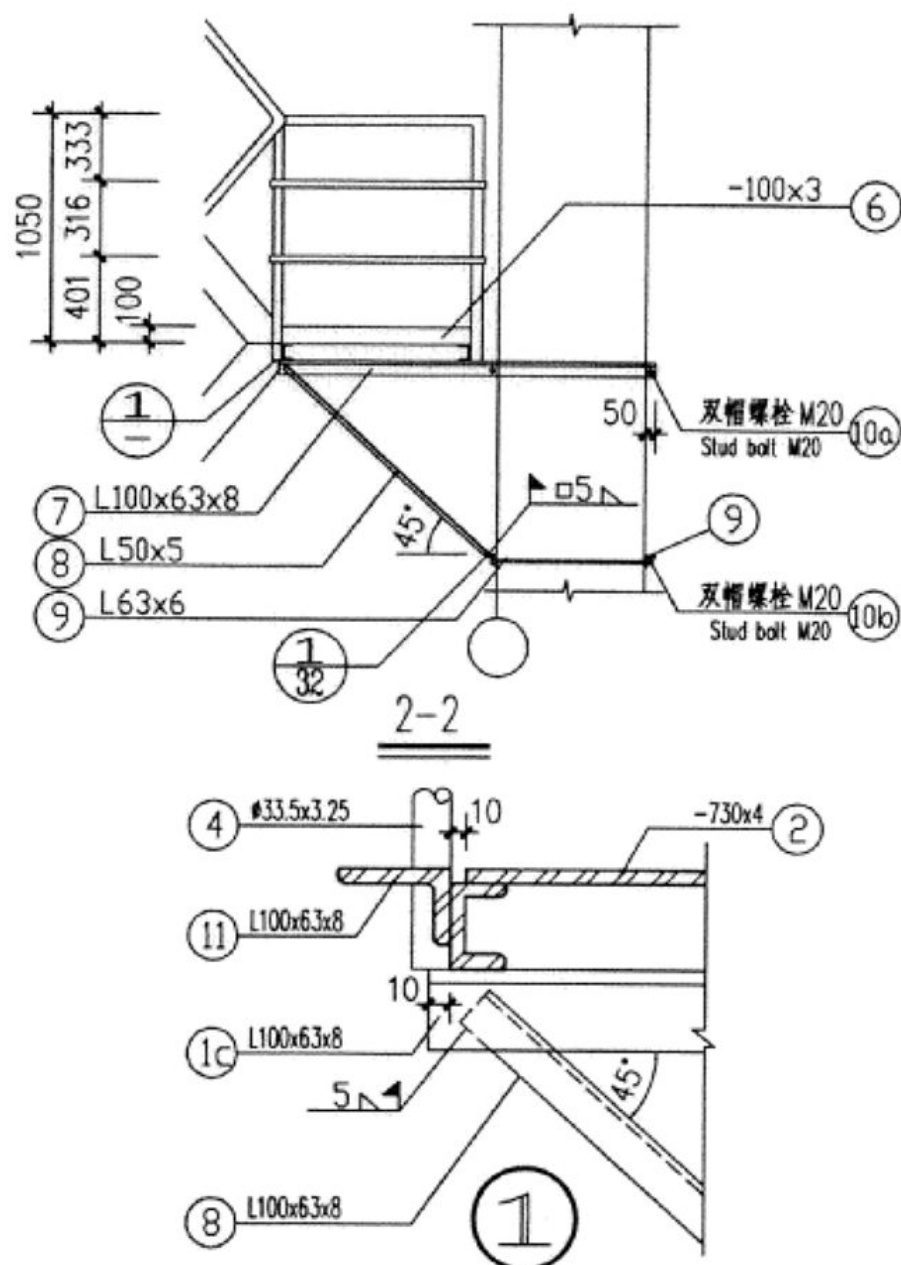
DT hoist bench Detail (1)

图集号
Atlas Number

STT10

页 Page

33



P-2						
构件号 Member	规格 Dimension	长度 Length	数量 Qty.	个重 Weight	共重 Total Weight	
1	a	750	1	6.03	6.03	平台框架 Bench framing
	b	740	2	5.95	11.90	
	c	1813	2	14.58	29.16	
2	-730x4	1730	1	43.44	43.44	平台花纹钢板 Bench wood grain steel plate
3	∅33.5x2.5	3828	1	11.22	11.22	扶手 hand-rail
4	∅33.5x3.25	1080	6	2.61	15.66	立杆 vertical bar
5	-30x4	3648	2	3.43	6.86	横杆 transverse bar
6	-100x3	3652	1	8.62	8.62	挡板 Splash board
7	L100x63x8	1316	2	12.98	25.96	平台抱柱支架 The bench embraces the stanchion standard
8	L50x5	1147	2	4.32	8.64	支架横梁 Standard hammer beam truss
9	L63x6	1100	2	6.29	12.58	抱柱支架 Embrace the stanchion standard
10	a	M20	1100	2	2.90	支架双帽螺栓 Standard stud bolt
	b	M20	500	2	1.42	

合计重量 (kg)
Total weight (kg)

188.71

注：抱柱构件是按400x1000柱截面计算。

Note:

Embrace the stanchion structural member to press 400mmx1000mm stanchions cut the surface computation.

DT吊车平台详图 (二)

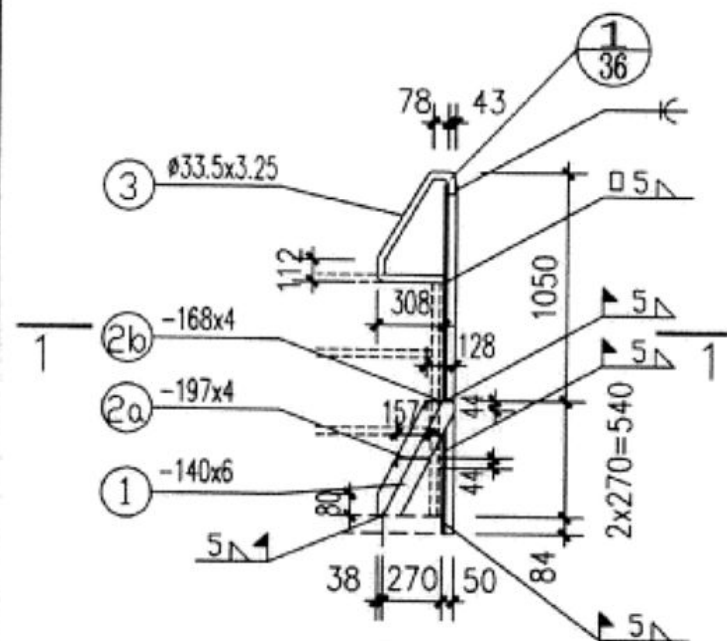
DT hoist bench Detail (2)

图集号
Atlas Number

STT10

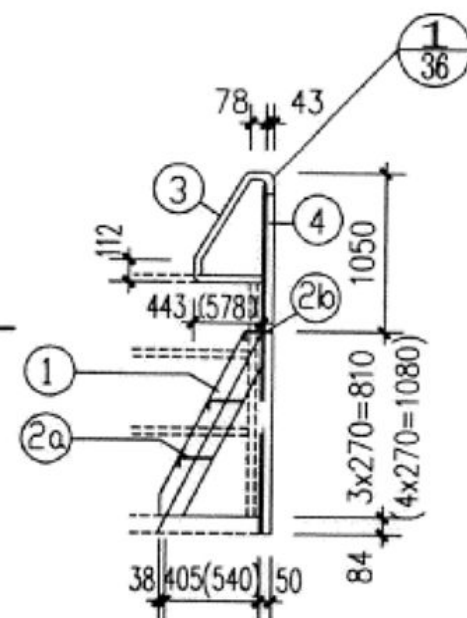
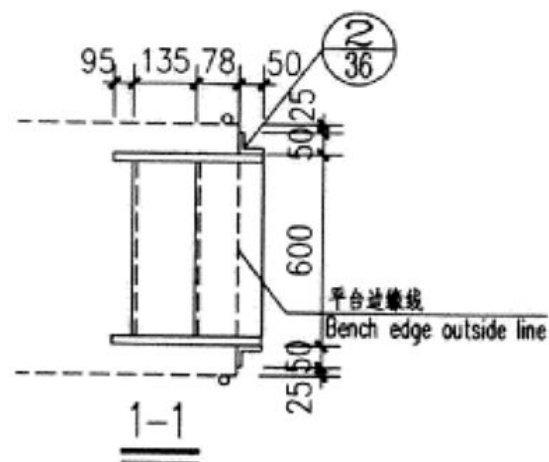
页 Page

34



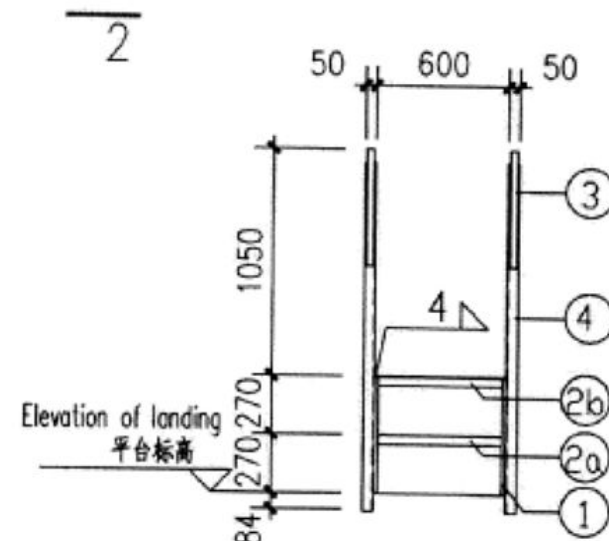
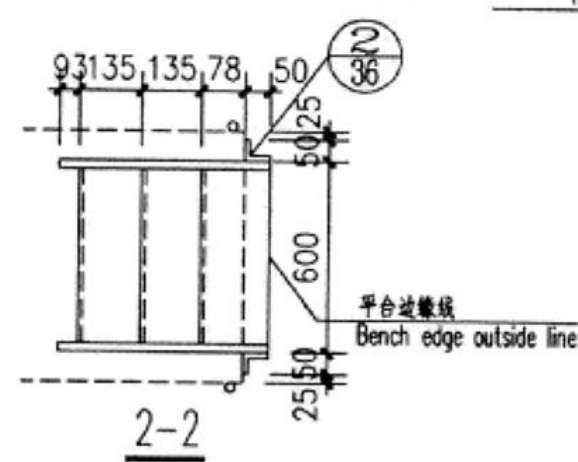
小梯 A

Small step ladder A



小梯 B(C)

Small step ladder B(C)



3-3

小梯A、B、C详图 (一)

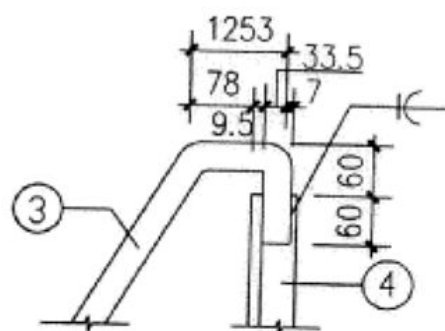
Small step ladder A, B, C Detail(1)

图集号
Atlas Number

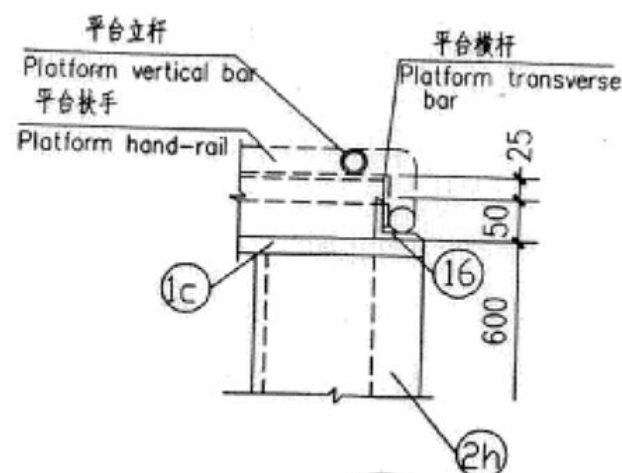
STT10

页 Page

35



①



②

小梯代号 Small step ladder code number		小梯 A Small step ladder A				小梯 B Small step ladder B				小梯 C Small step ladder C						
构件号 Member	规 格 Dimension	长度 Length	数量 Qty	个重 Weight	共重 Total Weight	长度 Length	数量 Qty	个重 Weight	共重 Total Weight	长度 Length	数量 Qty	个重 Weight	共重 Total Weight			
1	-140x6	643	2	4.24	8.48	945	2	6.23	12.47	1247	2	8.22	16.44	梯梁 Ladder girder		
2a	-197x4	588	1	3.98	3.98	588	2	3.98	7.96	588	3	3.98	11.94	平台花纹钢板 Bench wood grain steel plate		
2b	-168x4	588	1	3.40	3.40	588	1	3.40	3.40	588	1	3.40	3.40			
3	∅33.5x3.25	1082	2	2.62	5.24	1519	2	3.68	7.35	1956	2	4.73	9.47	扶手 Hand-rail		
4	L50x5	1614	2	6.08	12.17	1884	2	7.10	14.20	2154	2	8.12	16.24	竖栏杆 Lengthways rail		
合计重量 Total weight		33.27(kg)				45.38(kg)				57.49(kg)						
										小梯A、B、C详图 (二) Small step ladder A, B, C Detail (2)				图集号 Atlas Number		ST110
														页 Page		36