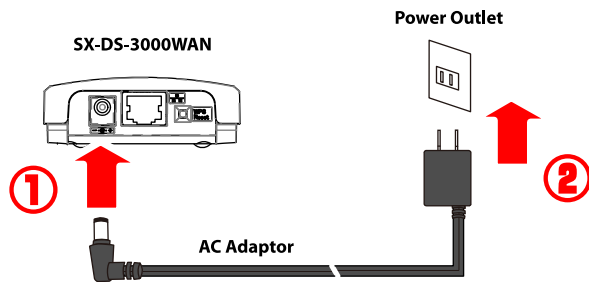


SX-DS-3000WAN allows you to configure its wireless settings easily using a push switch if your wireless router supports WPS (Wi-Fi Protected Setup). This sheet explains how to configure wireless settings using the push switch.

! NOTE

- To perform the wireless configuration using WPS, your wireless router must support WPS. Please make sure that a wireless router supporting WPS is set up in your environment.
- While performing this configuration, please temporarily move SX-DS-3000WAN closer to your wireless router to make it easier for both devices to communicate.
- Depending on your wireless router, WPS may need to be enabled manually. For details, refer to the operation manual that came with your wireless router.
- If a security feature such as MAC Address filtering is enabled on your wireless router, disable it temporarily so that SX-DS-3000WAN can communicate with your wireless router.

- 1** Connect the AC adaptor to SX-DS-3000WAN and the AC plug to the power outlet.



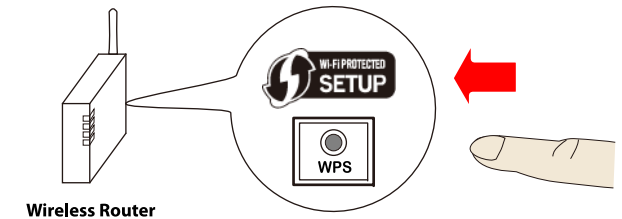
- It is not necessary to connect a network cable to SX-DS-3000WAN.

- 2** Confirm that the Wireless LED(WLAN) on SX-DS-3000WAN blinks in Orange or turns to Green.



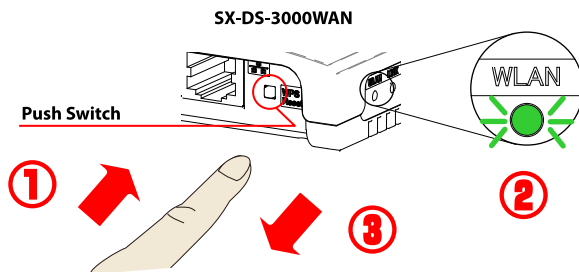
- If the Wireless LED does not blink in Orange or turn to Green, reset SX-DS-3000WAN to factory defaults and start from step 1 again. For how to reset SX-DS-3000WAN to its factory defaults, refer to the Users Manual or Setup Guide.

- 3** Press the WPS button on your wireless router. Confirm that your wireless router is ready for a wireless connection to be made.



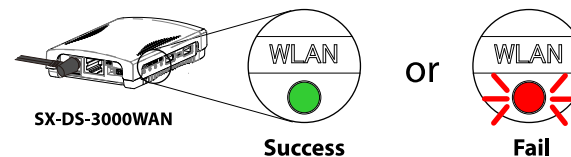
- The name, position and shape of the WPS button will differ depending on your wireless router. For details, refer to the operation manual that came with your wireless router.
- Please use only one wireless router. If two or more routers are waiting for wireless connections, SX-DS-3000WAN will not be able to connect properly.

- 4** Press and hold the push switch on SX-DS-3000WAN. When the Wireless LED blinks in Green, release the push switch.



- Within 3-10 sec after pressing and holding down the push switch, the Wireless LED will blink in Green.

- 5** SX-DS-3000WAN will start to communicate with your wireless router. The Wireless LED's lighting pattern will show you if the wireless configuration succeeded or failed.



- It may take a while to complete the wireless configuration depending on your environment (up to 2 min).

- When successful, the Wireless LED will turn to Green.**
- In this case, wireless configuration is complete.
- Power off SX-DS-3000WAN, move it to where you wish to use it and then power it on again.
 - Connect the USB device(s) that you wish to use over the network to SX-DS-3000WAN.
 - To install the software applications onto your computer, click **Computer Configuration** from the menu screen. For details, refer to the Users Manual.

- It is not necessary to install the applications if you plan to use printers with the standard Windows printing feature.

- When wireless configuration has failed, the Wireless LED will blink in Red.**
- Read the instructions on this sheet and start from step 3 again.