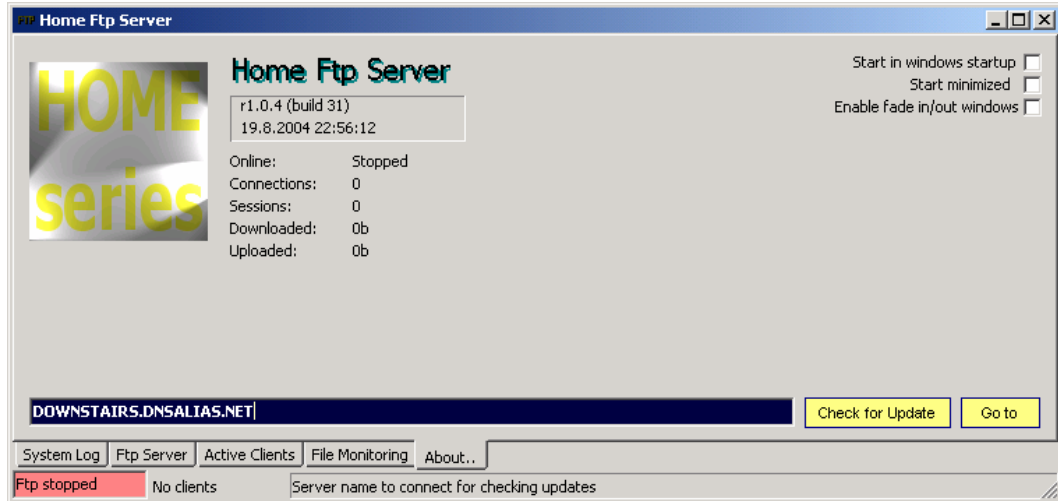


# Home Ftp Server

Viimeksi päivitetty: 23.08.2004, Ari Pikivirta

## ESITTELY

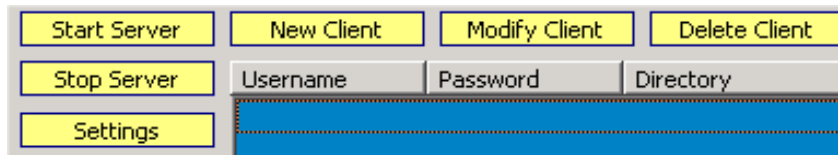


Home Ftp Server on ilmainen Windows ftp server ohjelmisto, jossa on paljon toimintoja. Mainitakseni joitakin home ftp serverin ominaisuuksista: virtuaaliset hakemistot, tiedostojen seuranta, aktiivisten käyttäjien seuranta, tosiaikainen tapahtumien seuranta, web käyttöliittymä ja niin edelleen..

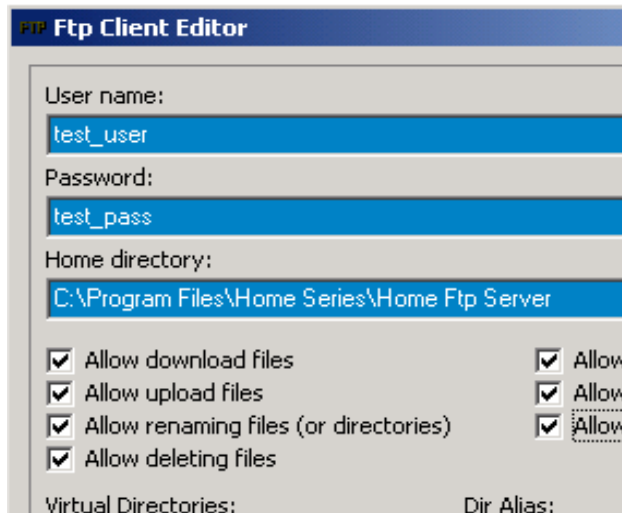
# ENSI ASKELEET KÄYNNISTÄMISEEN

Asennuksen jälkeen home ftp server ohjelma on valmis käytettäväksi ftp serveri toimintaan omalla tietokoneellasi. Testataksesi kuinka helppoa se oikeasti on, lue tämä läpi kokeile:

1. Käynnistä Home Ftp Server
2. Vaihda "Ftp server" lehdelle klikkaamalla kyseistä lehdykkää ikkunan alareunassa.

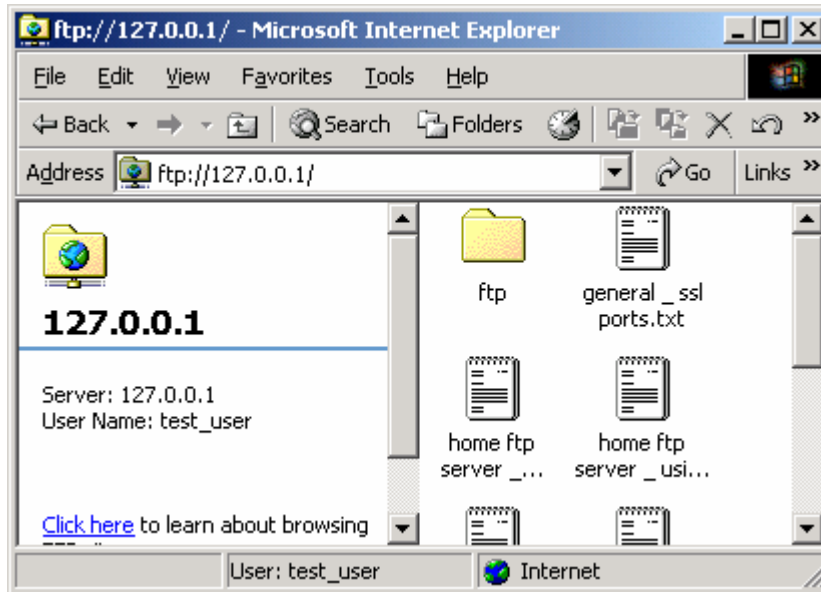


3. Sitten klikkaa "Start server" nappia. Muokkausruutu vasemmassa alareunassa muuttuu vihreäksi merkiksi siitä, että ftp serveri on käynnissä ja aktiivinen.
4. Lisää uusi käyttäjä klikkaamalla "New Client" nappia samalla välilehdellä.



5. Täytä tarpeelliset kentät testausta varten, eli käyttäjänimi ja salasana, jolla kirjaudut sisälle ftp serverin kautta hetken kuluttua. Hyväksy oletushakemisto (joka on sama kuin ftp serverin asennushakemisto).
6. Seuraavaksi avaa oletus ftp ohjelmasi, tai jos sinulla on asennettu uudempi Internet Explorer kuin 5, voit käyttää myös sitä ftp ohjelmasi.
7. Aseta osoitteeksi paikallinen tietokoneesi (se on aina <ftp://127.0.0.1>).

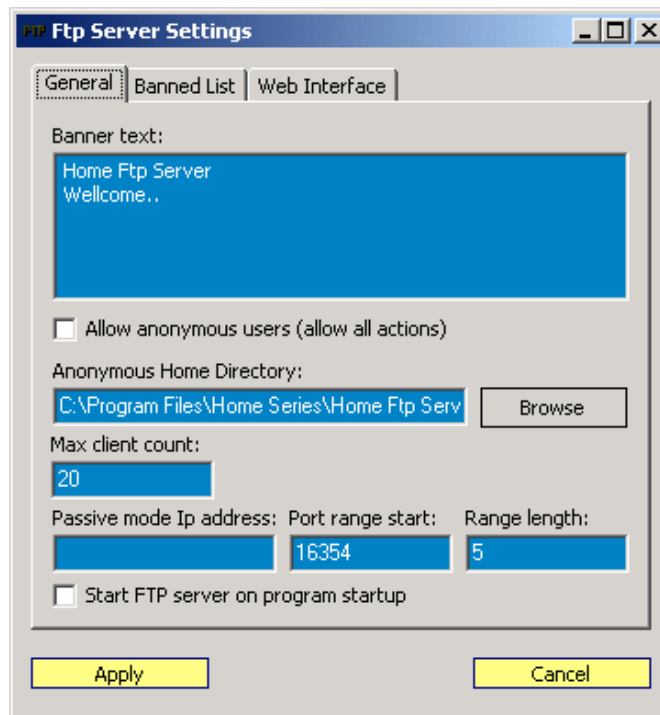
8. Nyt jos kaikki vaiheet on mennyt kuten tässä on kuvattu, seuraavaksi sinun pitäisi saada kirjautumisruutu johon täytät antamasi käyttäjänimen ja salasanan.
9. Nyt sinun pitäisi olla kirjautuneena ftp serverille ja edessäsi pitäisi olla alla kuvassa olevan kaltainen näkymä.



10. Varmistaaksesi, että tämä on palveltu sinulle ftp serverin kautta, avaa "log" lehdykkä ftp server ohjelmasta. Siellä pitäisi lukea kaikki toiminta mitä teit kun yhdistit ftp server ohjelmaan omalla oletus ftp asiakasohjelmallasi (Katso kuva alla).

```
23.8.2004 18:41:39 FTP> 127.0.0.1:1034 - authenticated as test_user (home = C:\Program Files\Home S
23.8.2004 18:41:39 FTP> 127.0.0.1:1034 - connected
23.8.2004 18:41:34 FTP> 127.0.0.1, anonymous - disconnected
23.8.2004 18:41:34 FTP> 127.0.0.1:1033 - failed to authenticate (user = anonymous, pass = IEUser@)
23.8.2004 18:41:34 FTP> 127.0.0.1:1033 - connected
```

### Settings, Defaults



#### Banner text:

Banner text is the text you will see when logging in to your ftp server. You can have here the latest information you are serving for you clients – and also normally this contains also the support information.

#### Allow anonymous users:

Default is unchecked. If checked all users that connects to your ftp server will be accepted to browse folder defined in box below (Anonymous home directory).

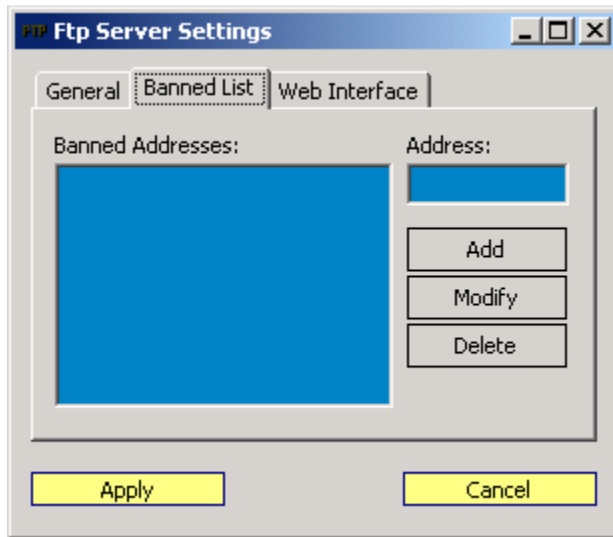
#### Anonymous Home Directory:

All anonymous clients are redirected to this folder if enabled. By default this folder is set to point to ftp directory in your home ftp server installation folder. Any client cannot traverse up from set home directory.

Start Ftp server on program startup:

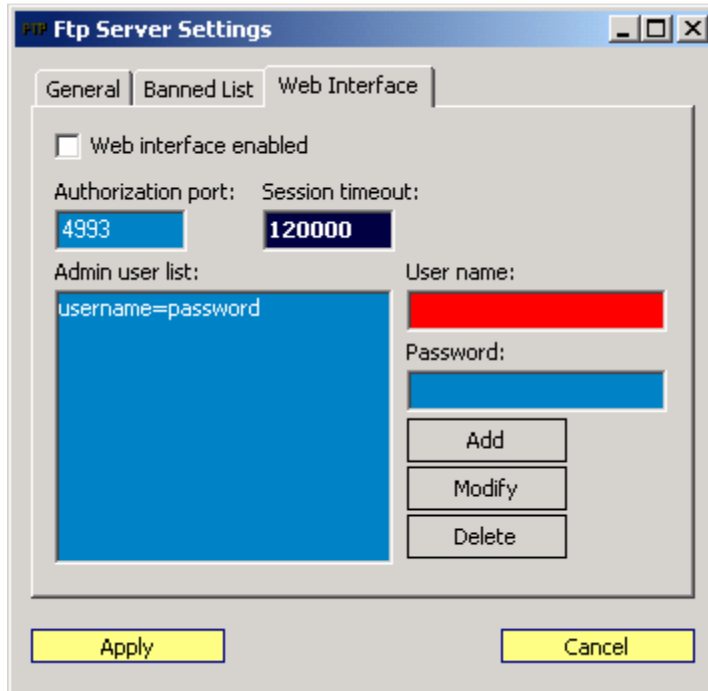
If checked, ftp server is automatically started on program startup, otherwise you have to click on start server button to have ftp server started.

### Settings, Banned List



To disable some IP accessing even anonymous folder of your ftp server, add the IP into this list. When IP listed here tries to connect it is immediately disconnected before it's request is handled.

### Settings, Web Interface



If you have web interface enabled, ftp server runs also http server at defined port that allows you to add, modify and delete ftp members remotely.

Web interface enabled:

If checked, also http server is started on ftp server startup. Http server is started at port defined in authorization port edit box.

Authorization port:

Web interface enable server port that is put listening on ftp server startup if web interface is enabled. By default this port is set to 4993. To try connecting to this web interface, navigate your default internet browser to <http://127.0.0.1:4993>.

User name and password:

User name and password that is allowed to add, modify or remove ftp members from your ftp server. These are case sensitive.

### Add or Modify Client

The screenshot shows the 'FFP Ftp Client Editor' window. It contains the following fields and controls:

- User name:** A text box containing 'test\_user'.
- Password:** A text box containing 'test\_pass'.
- Home directory:** A text box containing 'C:\Program Files\Home Series\Home Ftp Server' with a 'Browse' button to its right.
- Permissions:** A group of eight checkboxes, all of which are checked:
  - Allow download files
  - Allow upload files
  - Allow renaming files (or directories)
  - Allow deleting files
  - Allow change directory
  - Allow creating directories
  - Allow deleting directories
- Virtual Directories:** A large empty blue rectangular area.
- Dir Alias:** A text box with an 'Add' button to its right.
- Directory:** A text box with a 'Browse' button to its right.
- Buttons:** 'Apply' and 'Cancel' buttons at the bottom.

#### Allow download files:

If checked, user is allowed to download files from your ftp server.

#### Allow upload files:

If checked, user is allowed to upload files to your ftp server.

#### Allow renaming files (or directories):

If checked, user is allowed to rename files or directories on your ftp server.

#### Allow deleting files:

If checked, user is allowed to delete files from your ftp server.



### Allow change directory:

If checked, user is allowed to alter directory from home directory defined. Even this is checked, user is unable to traverse up from set home directory.

### Allow creating directories:

If checked, user is allowed to create directories.

### Allow deleting directories:

If checked, user is allowed to delete directories located in his home directory.

### Virtual directories:

These directories are virtually added into user's home directory. Dir alias is the directory name user sees added in his home directory. When user enters into that virtual directory the server really browses the directory set behind that alias directory.



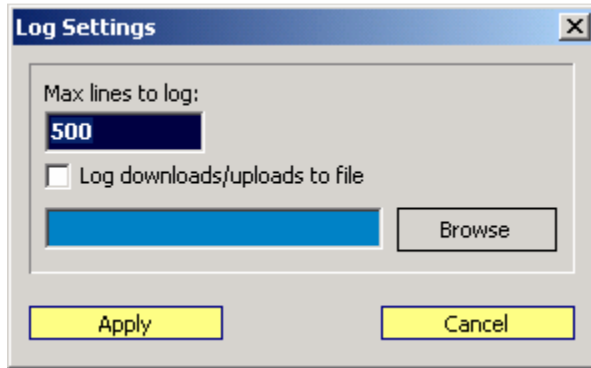
Virtual Directories:  
VirtualDirectory=D:\

For example, if you have add virtual directory with alias "VirtualDirectory" pointing into drive D:\ the user sees his home directory as follows:



Name	Size	Type
ftp		File Folder
VirtualDirectory		File Folder
ftplotsettings.lst	52 bytes	LST File

### Log Settings



Log settings window can be found on system log tab. Log settings contains the settings how different items are logged while server is running.

Max log lines to display:

Visible log book will contain maximum this amount of lines. All lines above this count will be just erased. Default is set to 500 lines.

Log downloads to file:

If checked all files served will be logged into the file defined into edit box below. Select file before checking this checkbox by clicking the browse button on right.